



Wyndeliff Road, SE7

£850,000

Dexters



Wyndcliff Road, SE7

A substantial five bedroom, two bathroom period house on the sought after Wyndcliff Road, offered to the market chain free. Measuring over 1,390 sq ft, this impressive family home retains a wealth of original features throughout, including original wooden flooring to the ground floor and traditional sash windows.

The ground floor comprises a bright bay fronted reception room with high ceilings, original flooring and period detailing, alongside a spacious dining room to the rear leading through to the kitchen. The layout offers excellent entertaining space and could be adapted further to suit modern family living. Arranged over the upper floors are five well-proportioned bedrooms and two bathrooms. The first floor provides three generous bedrooms and a family bathroom, while the second floor offers two further bedrooms and an additional bathroom, making it ideal for growing families in an excellent location.

Wyndcliff Road is conveniently located for both Charlton Station and Westcombe Park Station, providing excellent links into central London. The shops, cafés and amenities of Blackheath Royal Standard are nearby, as are the green open spaces of Greenwich Park and the popular local schools in the area.

Features

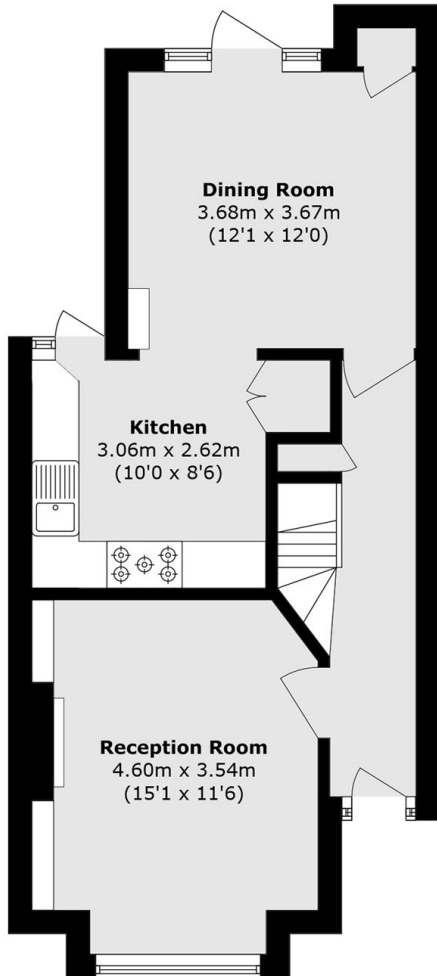
- Five Bedrooms
- Period Features
- Chain Free
- Victorian Terraced
- Two Bathrooms
- Outstanding Schools



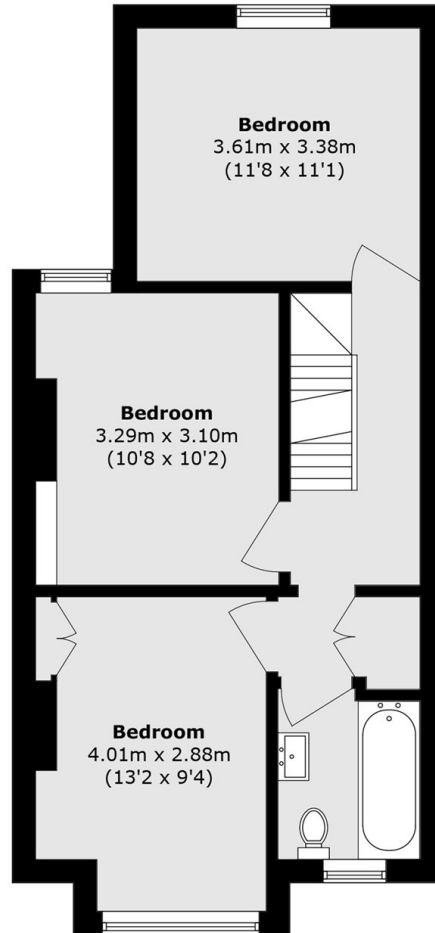




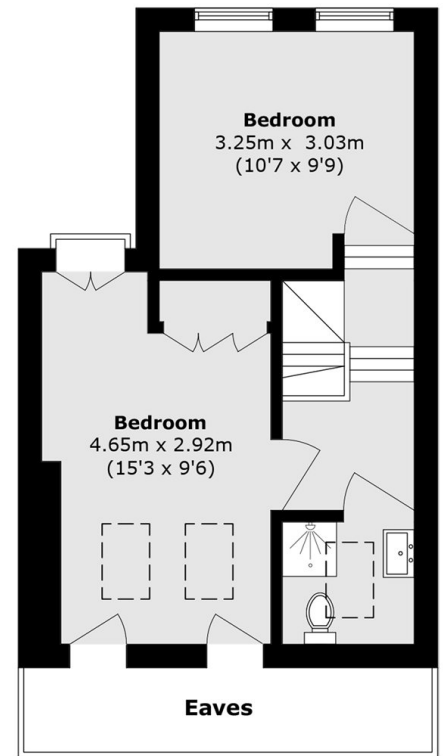
Wyndcliff Road, London, SE7



Ground Floor



First Floor



Second Floor

Total area (approx.): 129.3 sq. m (1391.8 sq. ft)

(Excluding Eaves)