



Frogmore, SW18

£2,100 Per calendar month

A superb one bedroom ground floor apartment within a gated development. This property offers residents parking and easy access to Wandsworth Town and Putney. Perfect for a single professional.

Lambeth Court is ideally located for the amenities of Wandsworth Town, Putney and Southfields, with an excellent selection of shops, cafés and restaurants nearby, as well as green open spaces along the River Thames and Wandsworth Common

Features

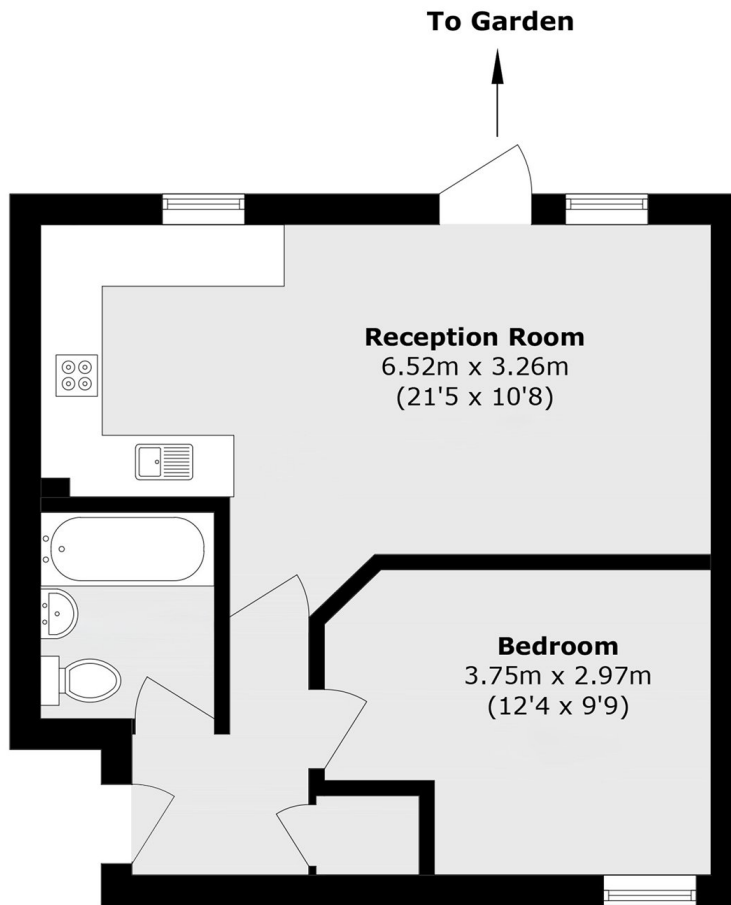
- One Double Bedroom
- Excellent Location
- Furnished
- Open Plan Living
- Residents Parking
- Communal Gardens



Frogmore, SW18



Frogmore,
London, SW18



Total area (approx.): 39.9 sq. m (429.4 sq. ft)