



George Lane, SE13

£1,700 Per calendar month

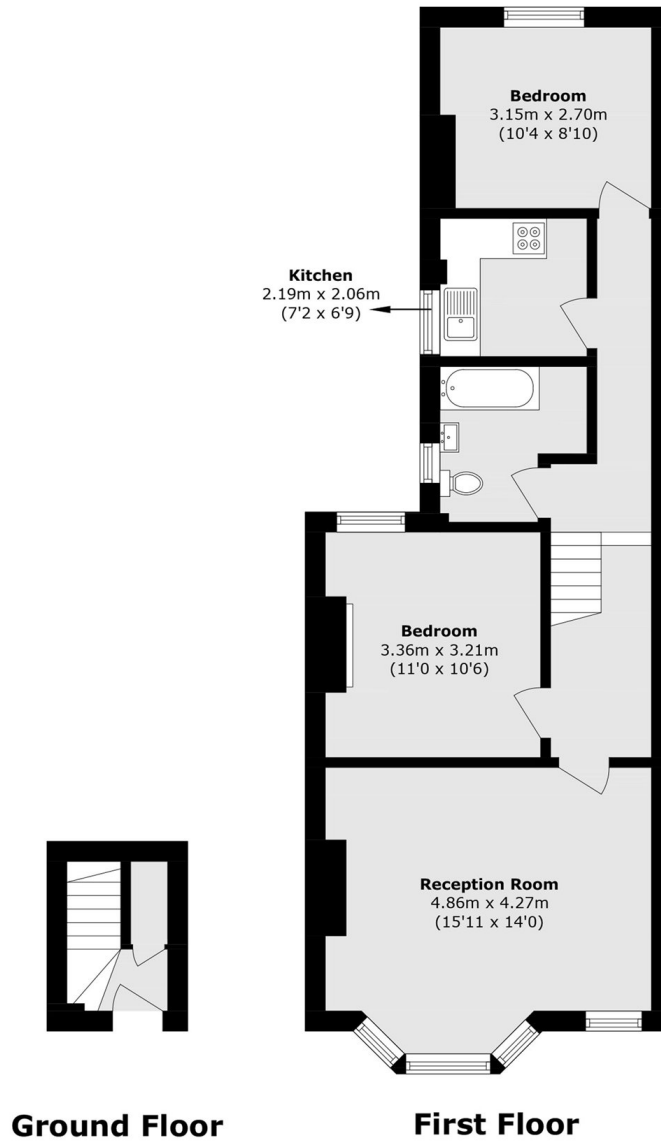
A first floor flat that comprises a large reception flooded with natural light, two double bedrooms, separate kitchen and a modern bathroom.

The property is located on Hither Green Lane and is a short walk to Hither Green Station, along with the local independent bakeries, coffee shops and restaurants Hither Green has to offer.

Features

- First Floor Flat
- Two Double Bedrooms
- Spacious Reception
- Separate Kitchen
- Modern Bathroom

George Lane,
London, SE13



Total area (approx.): 63.0 sq. m (678.1 sq. ft)