



3 Ridgeway Road

Swindon

£375,000

mcfarlane
property.com



3 Ridgeway Road

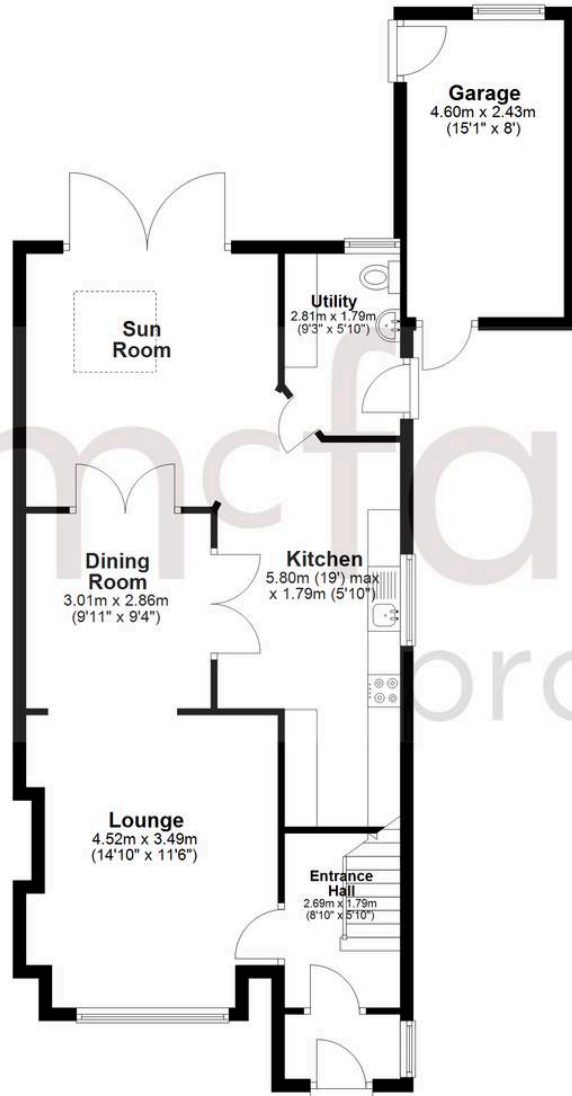
Swindon

This beautifully EXTENDED THREE-BEDROOM family home offers the perfect blend of modern style and practical living, set in a desirable and peaceful location. With over 1,200 sq. ft. of VERSATILE SPACE, the property features an inviting lounge with a charming exposed brick fireplace, a stylish DINING AREA that flows into a BRIGHT SUN ROOM with skylight and French doors opening to the garden. The contemporary kitchen with SHAKER-STYLE cabinetry, tiled flooring, and brick-effect splashbacks—ideal for home chefs. A UTILITY ROOM, cloakroom, and generous garage as well as an electric charging point to the front of the property adding everyday convenience. Upstairs, three well-proportioned bedrooms and a sleek family bathroom provide comfort for the whole family and the loft is fully boarded with light and power providing excellent additional storage. Outside, the landscaped garden is a true highlight, offering lush greenery, mature trees, and multiple seating areas perfect for entertaining or relaxing in the sun. With driveway parking for multiple vehicles and close proximity to local amenities, schools, and transport links, this home combines tranquility with convenience—ideal for families and those who love to entertain.

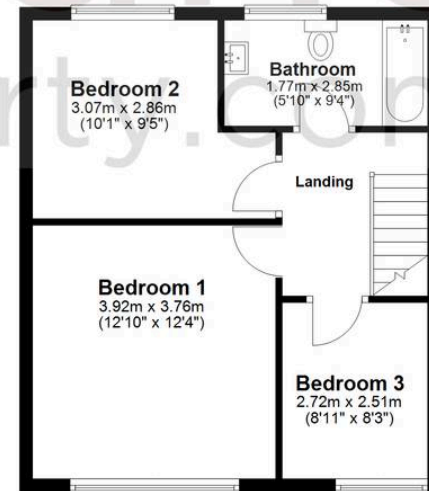




Ground Floor
Approx. 79.2 sq. metres (852.3 sq. feet)



First Floor
Approx. 43.9 sq. metres (472.1 sq. feet)



Total area: approx. 123.0 sq. metres (1324.4 sq. feet)

McFarlane Sales & Lettings

North Swindon, Redhouse Village Centre, Swindon - SN25 2FW

01793 296600 • swindon@mcfarlaneproperty.com • www.mcfarlaneproperty.com/