



FOSTER
& CO.

Firle Road

Lancing, BN15 0NZ

Asking price £1,250,000

An Exceptional Elevated Period Home Set in 1.62 Acres

Occupying a truly impressive elevated position and enjoying far-reaching views across its beautifully established grounds, this elegant period detached residence offers over 1.62 acres of private gardens and grounds, creating a rare sense of space, privacy and tranquility.

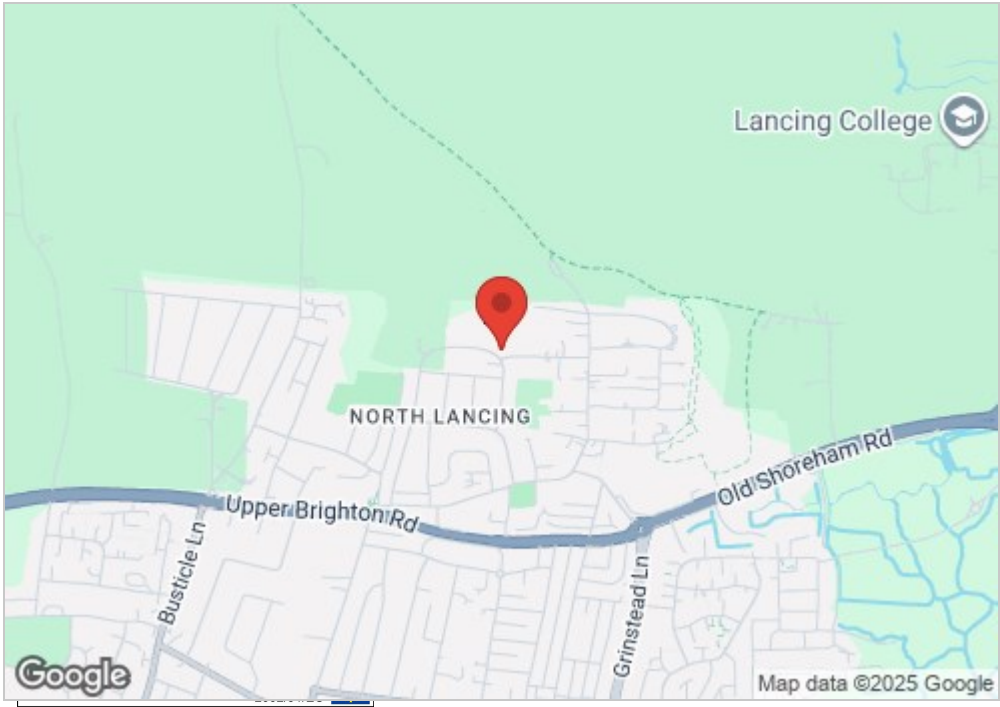
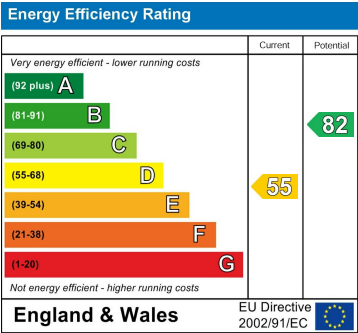
The property provides generous and versatile accommodation arranged over two floors, combining classic character features with modern refinements throughout. At the heart of the home is an inviting series of reception rooms, ideal for both relaxed family living and entertaining on a grand scale. The kitchen is well proportioned and thoughtfully arranged, flowing naturally into the dining space.

To the first floor, the property boasts five well-appointed bedrooms, offering flexible accommodation for families and guests alike. The principal bedroom enjoys excellent proportions and an outlook across the gardens, complemented by stylish family bath and shower rooms finished to a high standard.

Externally, the grounds are a particular highlight. The sweeping lawned gardens are interspersed with mature planting, terraced areas and pathways, creating a series of secluded outdoor spaces. There is also a detached garage and extensive driveway providing ample off-road parking.

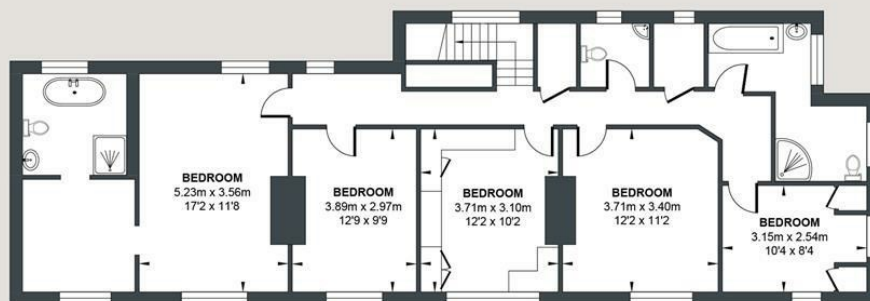
This is a rare opportunity to acquire a substantial period home in an elevated and highly private setting, offering expansive grounds, outstanding outdoor amenities and excellent living space, all within easy reach of local amenities and transport links.

- Detached Period House
- Sea Views
- Five Well-Proportioned Bedrooms
- Period Charm
- Dressing Room
- Approximately 1.62 Acres
- Gated
- Detached Garage
- Drawing Room



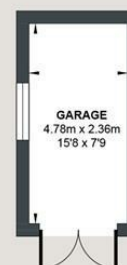
FIRLE ROAD

Approx. Gross Internal Floor (Excluding Garage) Area = 243.2 sq m / 2618.0 sq ft
Illustration for identification purposes only, measurements are approximate, not to scale.



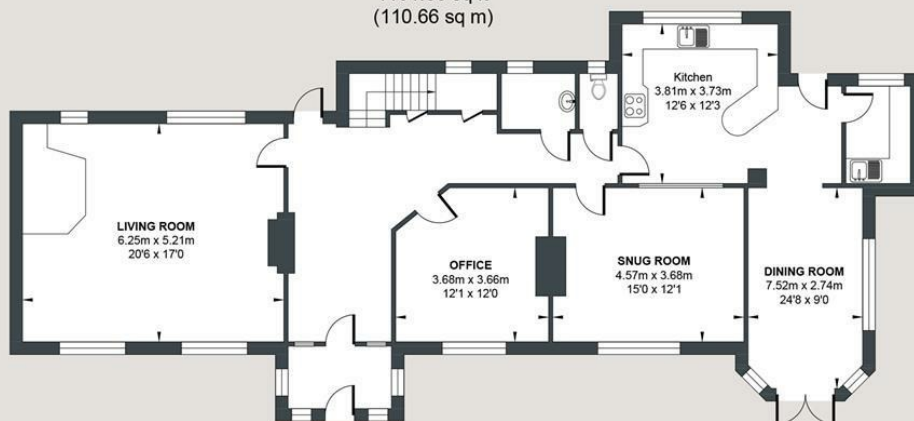
FIRST FLOOR

Approximate Floor Area
1191.36 sq ft
(110.66 sq m)



GARAGE

Approximate Floor Area
121.0 sq ft
(11.2 sq m)



GROUND FLOOR

Approximate Floor Area
1426.64 sq ft
(132.54 sq m)



Foster & Co and their clients give notice that:

These sales particulars do not constitute any part of an offer of contract and are for guidance for prospective purchases only and should be not relied upon as a statement of fact.

We are not to be held responsible for material information that has not been given to us by our client at the time of marketing.

All measurements are approximate



