



Rathbone Square, Fitzrovia, London, W1T

£1,100,000

- One bedroom apartment
- 564 sq. ft
- 6th floor
- 24-hour concierge
- Gym and swimming pool
- Balcony
- Comfort cooling
- Modern development

Situated on the sixth floor of the prestigious Rathbone Square development, this beautifully appointed one-bedroom apartment offers refined contemporary living in the heart of Fitzrovia.

Designed with sophistication and comfort in mind, the apartment features a bright open-plan layout enhanced by floor-to-ceiling windows, elegant finishes, and exceptional natural light throughout. The stylish kitchen and reception area create a seamless entertaining space, complemented by generous built-in storage and a private outdoor terrace.

Residents of Rathbone Square enjoy an unrivalled collection of five-star lifestyle amenities, including a luxury swimming pool, state-of-the-art fitness suite, private cinema, residents' lounge, and dedicated wine storage facilities – all set around one of central London's first newly created garden squares in over a century.

Perfectly positioned moments from the vibrant restaurants of Charlotte Street, the boutiques of Oxford Street, and the cultural attractions of the West End, the apartment combines tranquil residential living with immediate access to the best of London.

Excellent transport connections are available via nearby Tottenham Court Road station, Oxford Circus station, Euston station, and King's Cross St Pancras, offering effortless connectivity across the capital and direct routes to Heathrow via the A40.





ONE LONDON

PROPERTY

Rathbone Square,
Fitzrovia, London, W1T

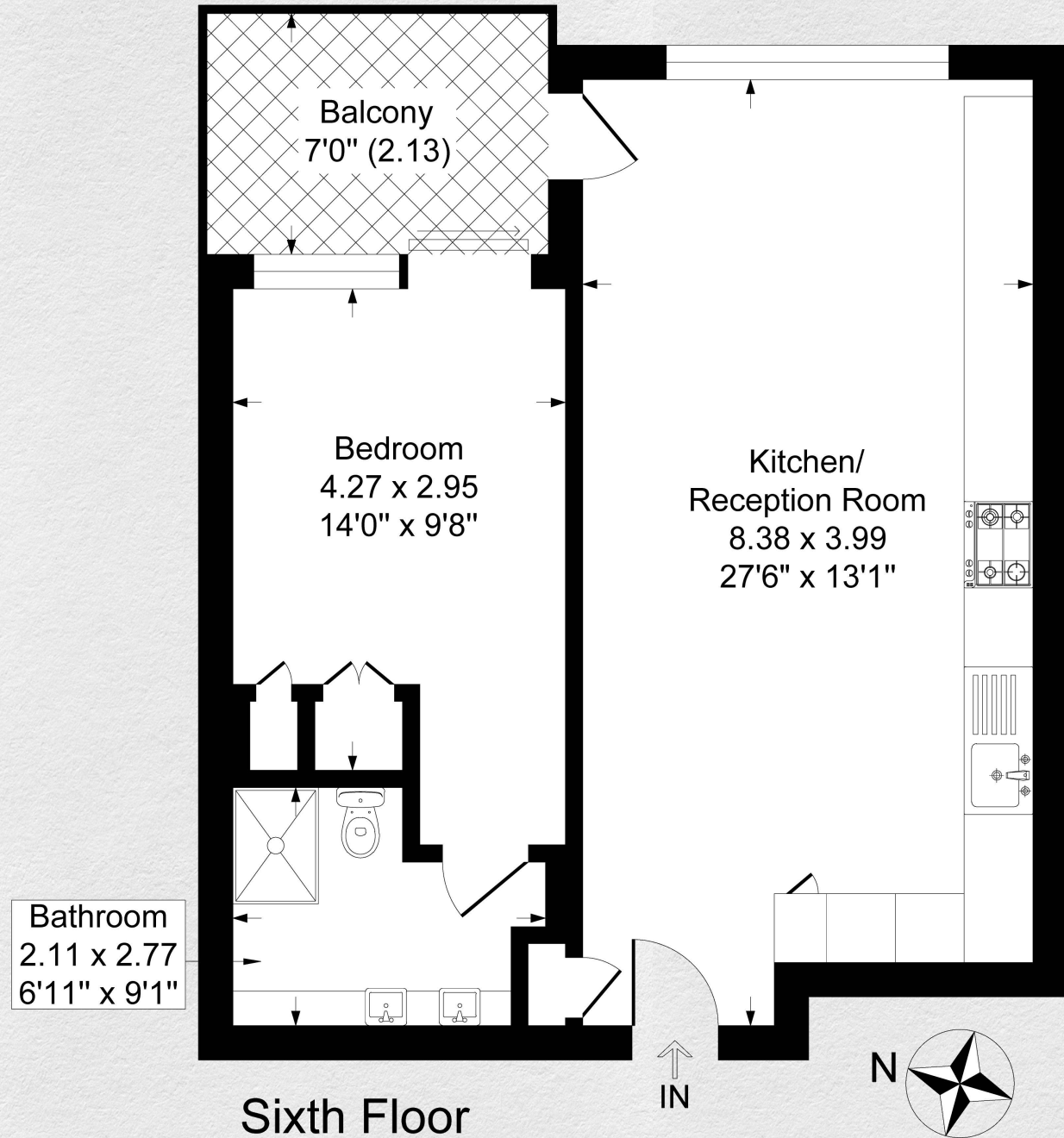
SIZE

564 sq ft

One bedroom | One bathroom

CONTACT

0207 856 0396
info@one-london.uk
www.one-london.uk



Sixth Floor

SR306

** For illustration purposes only. Could not be to scale.
One-London aims to ensure accuracy but is not liable
for any discrepancies.