

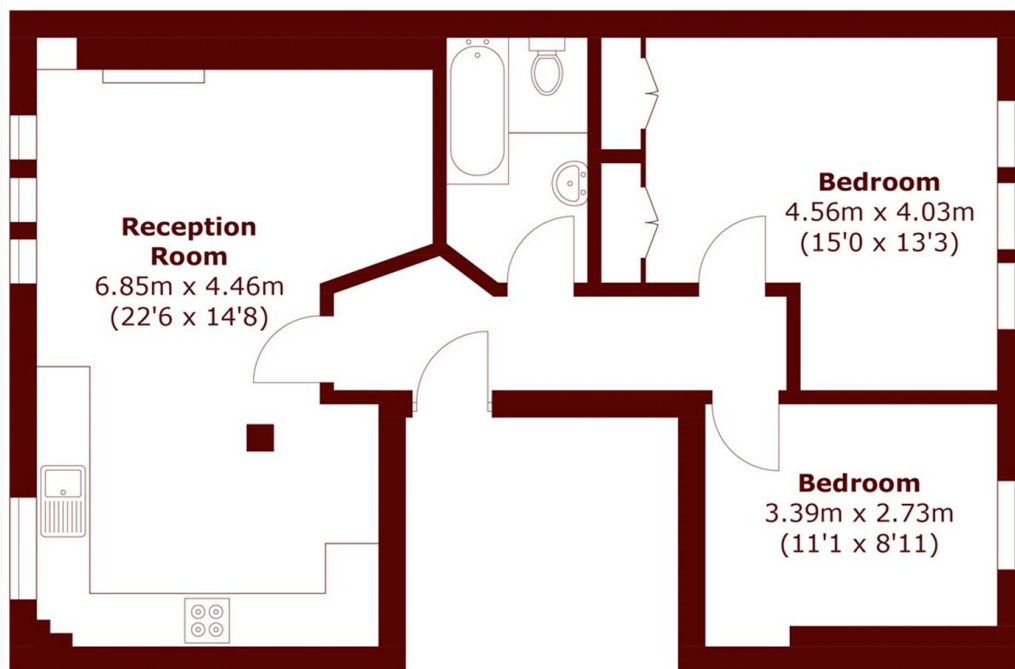


## Elsham Road, W14

£595,000

2 1 1 E

- Two Double Bedrooms
- Large Open Plan Kitchen
- Fantastic Location
- Second Floor
- Residential Street
- Prime Location



Total area (approx.): 63.6 sq. m (684.6 sq. ft)

## Marsh & Parsons Holland Park

57 Norland Square, London,  
W11 4QJ  
020 7605 6890