



Guide Price
£300,000

Leasehold

2x  1x  1x 

**Crown House, Godstone
Road, Kenley, Surrey,
CR8**

cubitt & west
Helping you move forwards



Main features

- Ground floor apartment with balcony & allocated parking space
- Large communal terrace, lots of storage, open plan living
- Walking distance to 3 train stations
- £150k for 50% shared ownership
- Rental £337 p.m, Service charges £176 p.m., 85 year lease

Accommodation

GROUND FLOOR

Entrance Hall

Kitchen/Living Room: 17'9 x 14'4
(5.41m x 4.37m)

Balcony

Bedroom 1: 14'1 x 10'2 (4.30m x 3.10m)

Bedroom 2: 13'6 x 7'8 (4.12m x 2.34m)

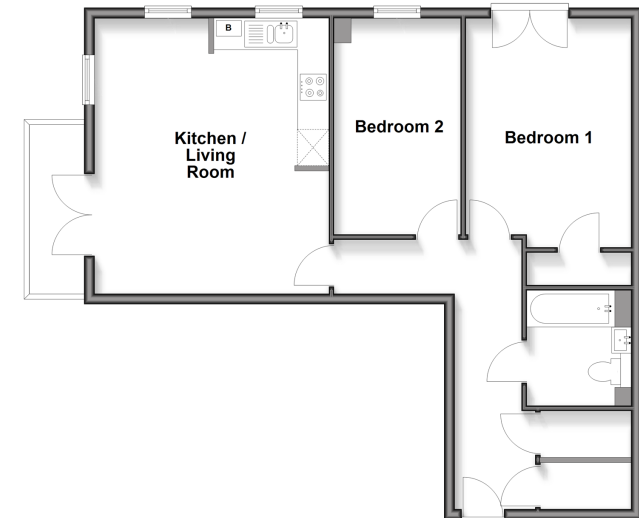
Bathroom

OUTSIDE

Allocated Parking Space

Communal Terrace

Ground Floor
Approx. 67.9 sq. metres (731.3 sq. feet)



Call Purley - 020 8660 8882 ■ cubittandwest.co.uk



21511662/20251204/DI/NH