

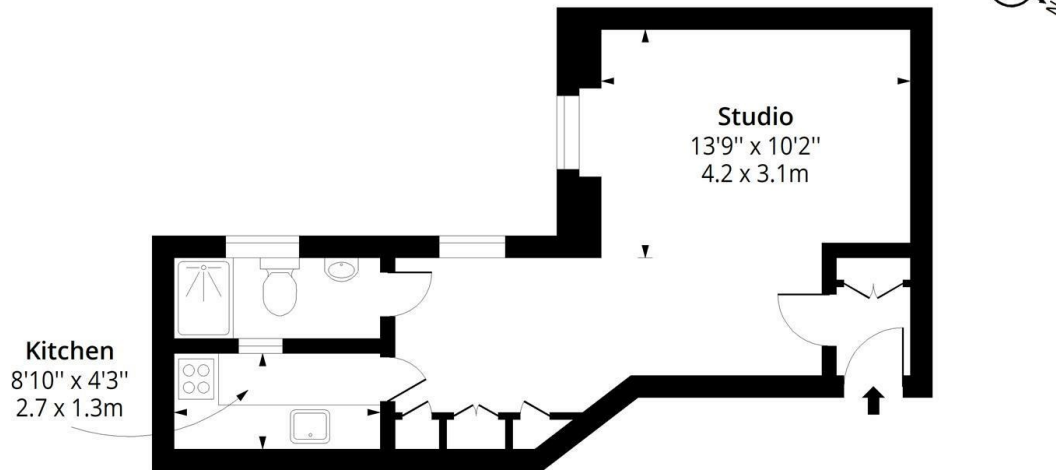
Flat 66, Mortimer Court Abbey Road, London, NW8 9AD

£1,950 Per month

- Sleek contemporary bathroom ,
- Moments from St John's Wood Station
- Great storage throughout
- Close to shops, and cafes
- Bathed in natural light

Mortimer Court, NW8

Approx. Gross Internal Area 382 Sq Ft - 35.49 Sq M



Sixth Floor

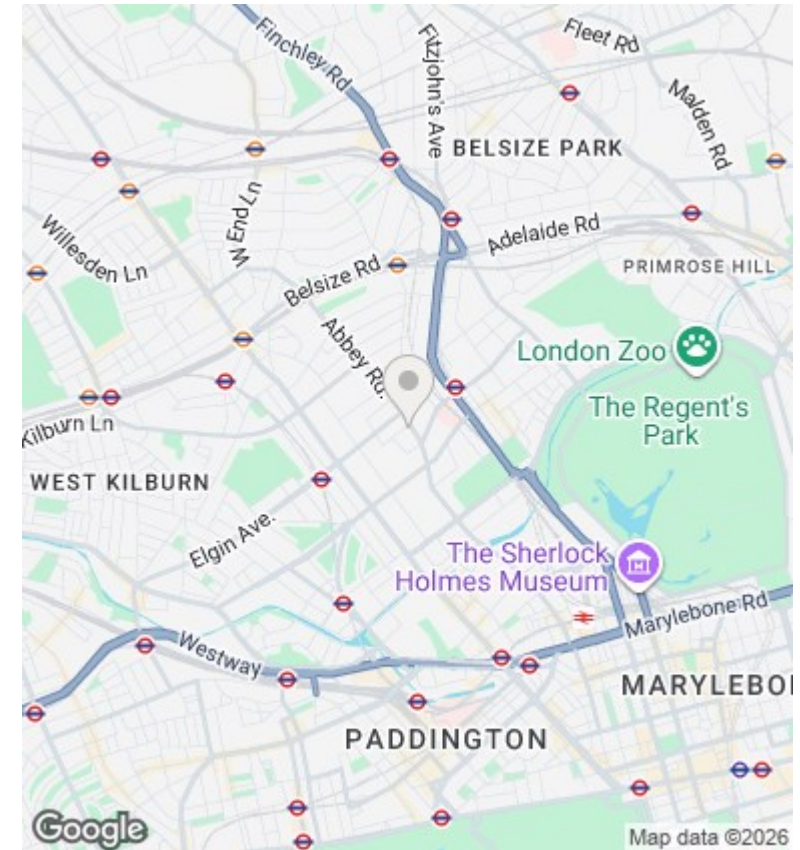
Floor Area 382 Sq Ft - 35.49 Sq M



Measured according to RICS IPMS2. Floor plan is for illustrative purposes only and is not to scale. Every attempt has been made to ensure the accuracy of the floor plan shown, however all measurements, fixtures, fittings and data shown are an approximate interpretation for illustrative purposes only. 1 sq m = 10.76 sq feet.

lpaplus.com

Date: 15/5/2025



Directions

Viewings

Viewings by arrangement only. Call 0208 075 4927 to make an appointment.

Council Tax Band

C

EPC Rating:

D

Energy Efficiency Rating		
	Current	Potential
Very energy efficient - lower running costs		
(92 plus) A		
(81-91) B		
(69-80) C		
(55-68) D	68	
(39-54) E		
(21-38) F		
(1-20) G		
Not energy efficient - higher running costs		
England & Wales	EU Directive 2002/91/EC	