





Property Description

A spacious and well-presented fourth-floor, two-bedroom apartment, offered for sale with no onward chain.

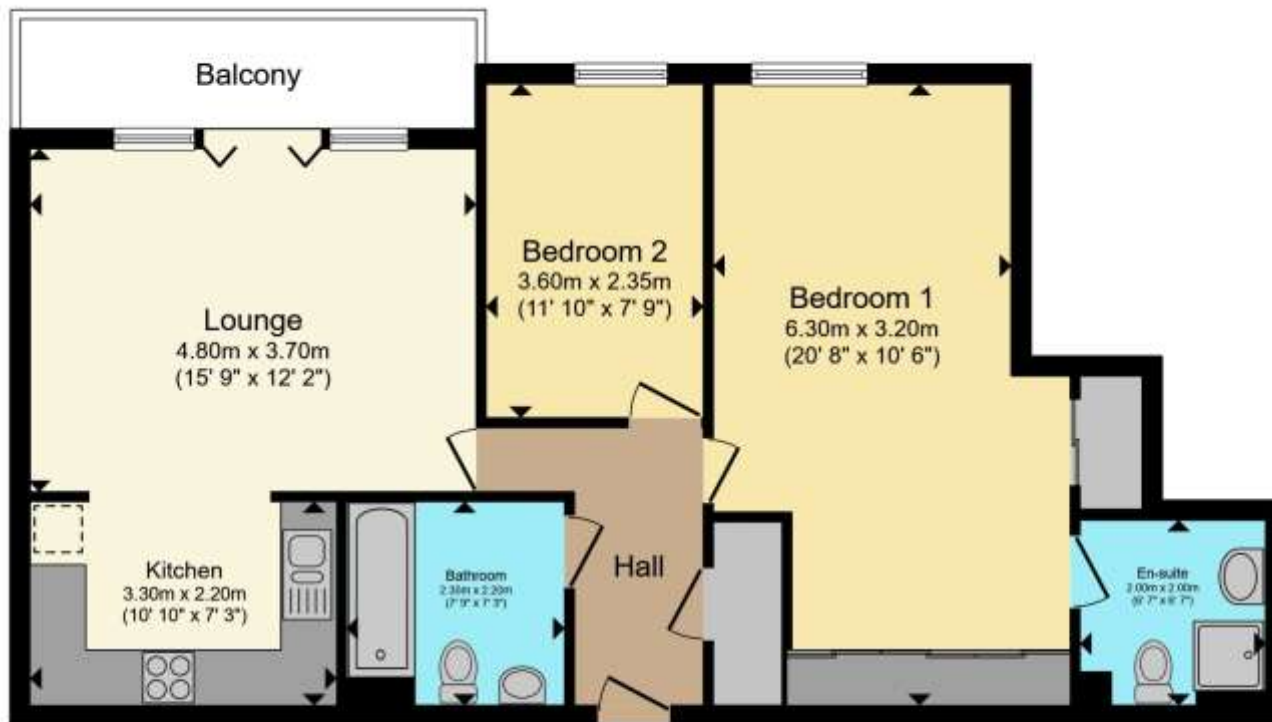
Situated on Tuns Lane in Slough, the property benefits from excellent transport links with easy access to the M4 and is within walking distance of local shops, as well as being within easy reach of the High Street and Farnham Road.

The accommodation comprises a generous 15 ft lounge/diner with access to a private balcony, a modern fitted kitchen with integrated appliances, two double bedrooms, and an en-suite to the master bedroom. Further benefits include ample storage cupboards throughout

Externally, the property offers allocated secure underground parking.







Total floor area 74.9 m² (806 sq.ft.) approx

This floor plan is for illustrative purposes only. It is not drawn to scale. Any measurements, floor areas (including any total floor area), openings and orientation are approximate. No details are guaranteed, they cannot be relied upon for any purpose and they do not form part of any agreement. No liability is taken for any error, omission or misstatement. A party must rely upon its own inspection(s). Powered by www.propertybox.io



To view this property please contact Connells on

T 01753 810 870
E slough@connells.co.uk

111 High Street
 SLOUGH SL1 1DH

EPC Rating: C Council Tax
 Band: D

Service Charge:
 5000.00

Ground Rent:
 200.00

Tenure: Leasehold

check out more properties at connells.co.uk

This is a Leasehold property with details as follows; Term of Lease 125 years from 01 Jan 2005. Should you require further information please contact the branch. Please Note additional fees could be incurred for items such as Leasehold packs.



1. MONEY LAUNDERING REGULATIONS Intending purchasers will be asked to produce identification documentation at a later stage and we would ask for your co-operation in order that there will be no delay in agreeing the sale. 2. These particulars do not constitute part or all of an offer or contract. 3. The measurements indicated are supplied for guidance only and as such must be considered incorrect. Potential buyers are advised to recheck measurements before committing to any expense. 4. We have not tested any apparatus, equipment, fixtures, fittings or services and it is in the buyers interest to check the working condition of any appliances.

Connells Residential is registered in England and Wales under company number 1489613, Registered Office is Cumbria House, 16-20 Hockliffe Street, Leighton Buzzard, Bedfordshire, LU7 1GN. VAT Registration Number is 500 2481 05.

See all our properties at www.connells.co.uk | www.rightmove.co.uk | www.zoopla.co.uk

Property Ref: SGH311718 - 0003