

Need a Mortgage in principle to make offers? Call us now for quick assistance!
0121 775 0101



Do you need to sell? Start your journey now! Call us we can help.
0121 775 0101



SCAN FOR MORE INFO
SIZE - 1404 Sq Ft
TENURE - Freehold
COUNCIL TAX - Solihull Metropolitan Borough Council - F
BROADBAND - Upload & Download Max 1800Mbps
EPC - B - 83
PARKING - For at least 5 Cars
FLOODRISK - Very Low
SERVICES - Mains
COVENANTS - N/A

369 Lugtrout Lane

Catherine-de-Barnes
Offers Over £550,000

Nestled on the tranquil Lugtrout Lane in Catherine-De-Barnes, this substantial detached family home offers a perfect blend of comfort and convenience and is an ideal choice for families seeking both comfort and space. The home is presented to the market with no upward chain, allowing for a smooth transition for prospective buyers.

FEATURES

- No Upward Chain
- Detached Family Home
- Dining Area Leading Through to Spacious Lounge
- Fitted Kitchen with Separate Utility Room
- Principal Bedroom with En-Suite Shower Room
- Three Further Good Sized Bedrooms
- Family Bathroom
- Long Private Rear Garden Backing with Access to the Grand Union Canal
- Ample Driveway Parking and Single Garage
- Short Drive to Solihull Town Centre

Are you an investor interested in expanding your portfolio?

Call 0121 775 0101 to provide your investment criteria for alerts.



SCAN TO VIEW OUR WEEKLY FILMS & SUBSCRIBE

Sneak Peeks

Every week, we unveil "Sneak Peeks," a feature showcasing exclusive properties before they hit Rightmove and other platforms.

The Landlord Club

Join our Landlord Club for weekly updates on legislation, market trends, and our Letting Director's 'Investment Pick of the Week' for optimal ROI.

HTSPMD

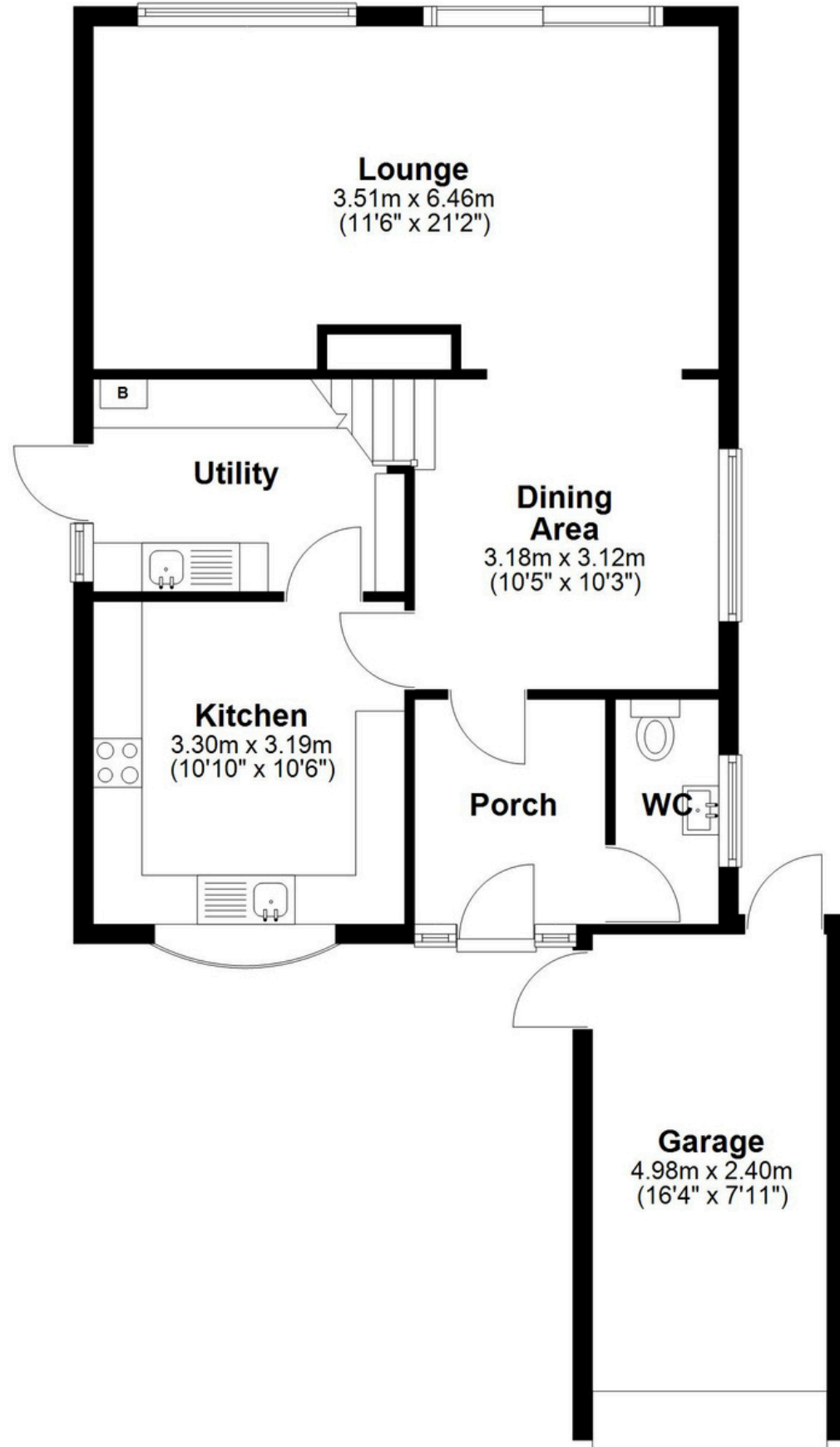
Tune into 'How's The Solihull Property Market Dom' weekly for a quick, insightful snapshot of the market.

The Mortgage Update

Get weekly insights and the best deals with our Mortgage Update, your shortcut to navigating the complex mortgage landscape confidently.

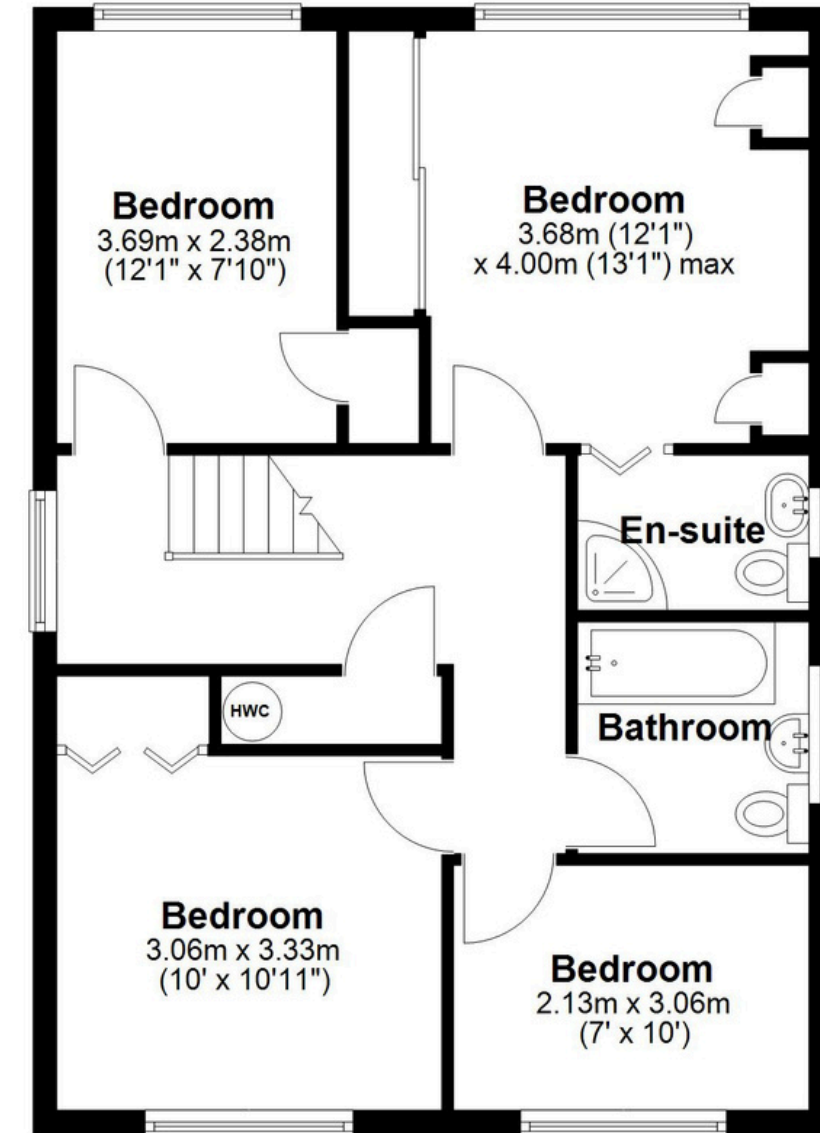
Ground Floor

Approx. 71.1 sq. metres (765.6 sq. feet)



First Floor

Approx. 59.4 sq. metres (638.9 sq. feet)



Total area: approx. 130.5 sq. metres (1404.5 sq. feet)

This floor plan is for illustration purposes only, this is not intended to be a measured/scaled survey or comply with RICS guidelines. All measurements (including total floor area) openings, orientation and floor area are approximate. No details are guaranteed, they cannot be relied upon for any purpose and do not form part of any agreement. A party must rely upon its own inspection(s). No responsibility is taken for any error, omission, or mis-statement.

Plan produced using PlanUp.