



158 Camden High Street, London, NW1 0NE

£115,000 Per Annum

# 158 Camden High Street, London NW1 0NE

Situated in a highly sought-after location in the heart of Camden Town, Alwyne Estates are delighted to present an exceptional commercial opportunity.

Ideally positioned just a one-minute walk from Camden Town Station and only a 10-minute journey to the West End, the property benefits from excellent connectivity and strong footfall, offering outstanding business potential. This iconic prime location lends itself to a wide range of commercial uses.

The property comprises approximately 163.8 sq. metres (1,763 sq. ft.) of internal space, providing a flexible and versatile layout suitable for various business operations. The premises were previously trading as a shoe shop and is currently operating as a supermarket.

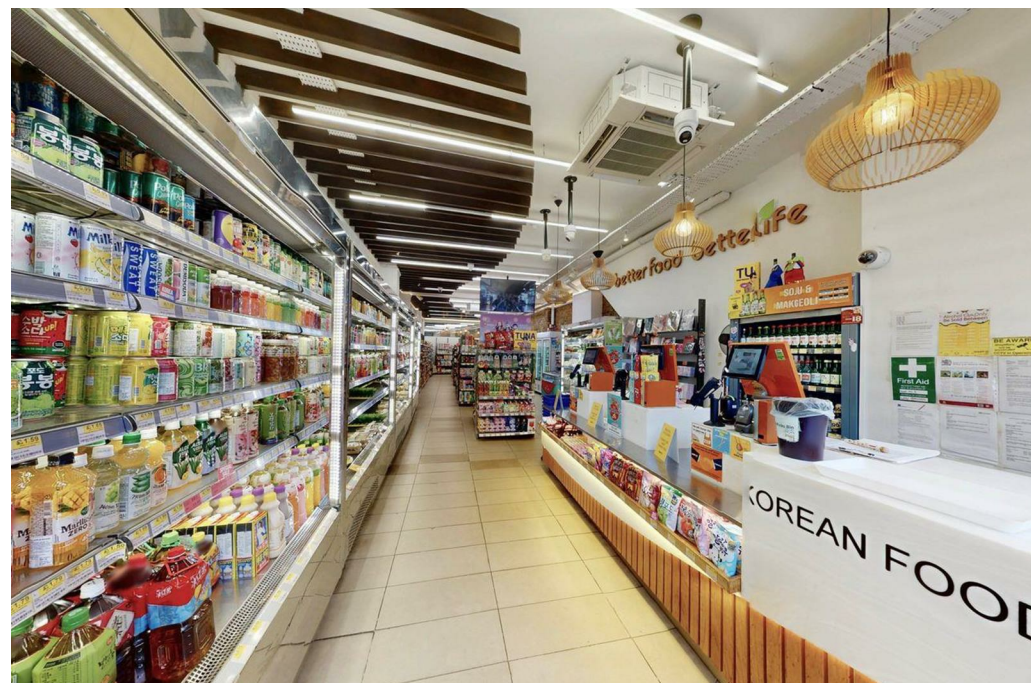
Asking Rent (per annum): £115,000

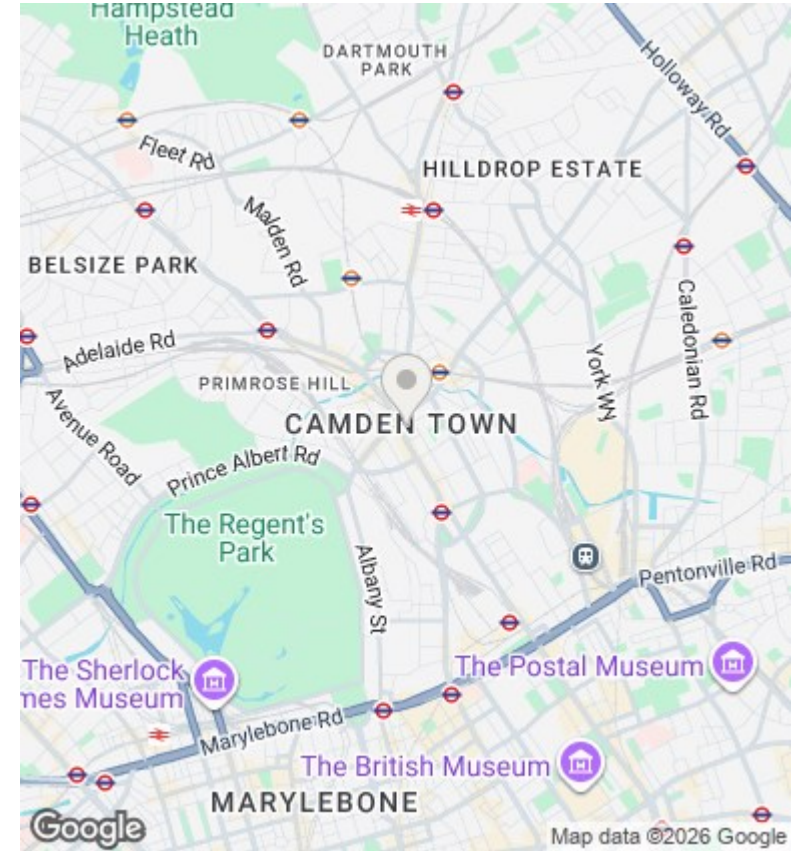
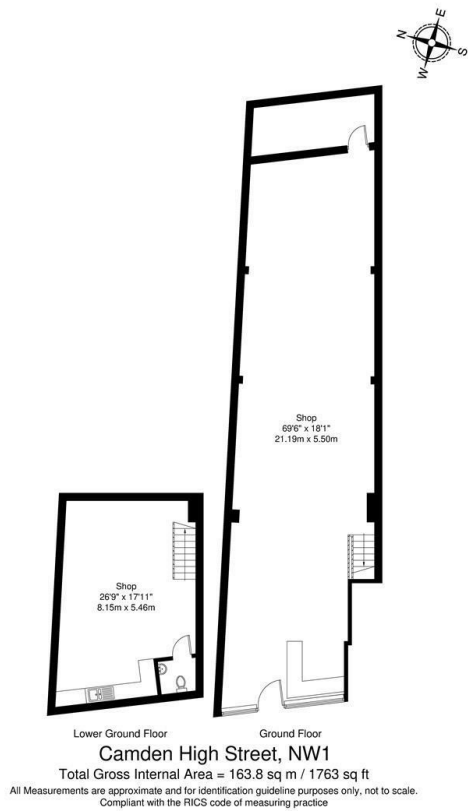
Premium: None

Business rates TBC



Council Tax Band: C





## Directions

## Viewings

Viewings by arrangement only. Call 02073593191 to make an appointment.

## Council Tax Band

C

| Energy Efficiency Rating                    |  | Current                 | Potential |
|---|--|-------------------------|-----------|
| Very energy efficient - lower running costs |  |                         |           |
| (92 plus) A                                 |  |                         |           |
| (81-91) B                                   |  |                         |           |
| (69-80) C                                   |  | 74                      | 74        |
| (55-68) D                                   |  |                         |           |
| (39-54) E                                   |  |                         |           |
| (21-38) F                                   |  |                         |           |
| (1-20) G                                    |  |                         |           |
| Not energy efficient - higher running costs |  |                         |           |
| England & Wales                             |  | EU Directive 2002/91/EC |           |



