



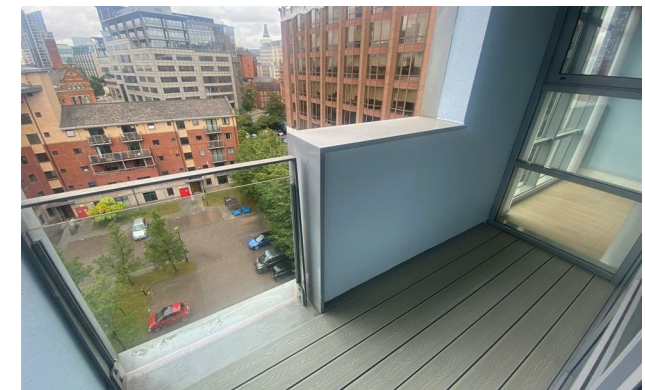
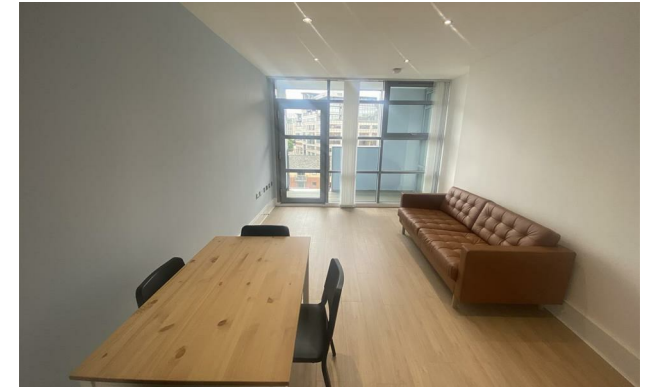
*jordan fishwick*

Apt 808 The Lock, 41 Whitworth Street, M1  
£1,900 Per Calendar Month



## The Lock Manchester M1 5BE

£1,900 Per Calendar Month



### The Property

**\*PLEASE NOTE - THERE ARE BUILDING REMEDIAL WORKS OCCURING\***

Available Late August. This 8th Floor, Three Bedroom apartment located in The Lock Building, Whitworth Street West. Close to Oxford Road, Manchester University campuses and has an On-site Concierge.


The apartment has been refurbished throughout and has new furniture throughout the apartment. Layout comprises of entrance hallway leading to open plan living area with kitchen having new appliances, door leading out on to balcony which overlooks the canal. Large double bedroom with en-suite shower room, Further huge double bedroom, and a third bedroom with SINGLE BED. FULLY FURNISHED. Secure Parking Available. Tax Band E. EPC Rating C. £30 PCM Water charge.

Reposit (Nil Deposit Option) available on this property.

**\*VIDEO/ PHOTOS OFFERS NOT ACCEPTED - PLEASE CALL TO BOOK A VIEWING\***

- Available Late August
- THREE Bedrooms w/ Balcony
- 2 Doubles & 1 Single
- Laminate Flooring
- Furnished
- Close to Universities
- £30 PCM Water charge
- Tax Band E
- Parking included



Energy Efficiency Rating		
	Current	Potential
Very energy efficient - lower running costs		
(92 plus) <b>A</b>		
(81-91) <b>B</b>		
(69-80) <b>C</b>	<b>76</b>	<b>78</b>
(55-68) <b>D</b>		
(39-54) <b>E</b>		
(21-38) <b>F</b>		
(1-20) <b>G</b>		
Not energy efficient - higher running costs		
<b>England &amp; Wales</b>	EU Directive 2002/91/EC 	





These particulars are believed to be accurate but they are not guaranteed and do not form a contract. Neither Jordan Fishwick nor the vendor or lessor accept any responsibility in respect of these particulars, which are not intended to be statements or representations of fact and any intending purchaser or lessee must satisfy himself by inspection or otherwise as to the correctness of each of the statements contained in these particulars. Any floorplans on this brochure are for illustrative purposes only and are not necessarily to scale.

Offices at: Offices at Chorlton, Didsbury, Disley, Hale, Glossop, Macclesfield, Manchester Deansgate, Manchester Whitworth Street, New Mills, Sale, Wilmslow and Withington