

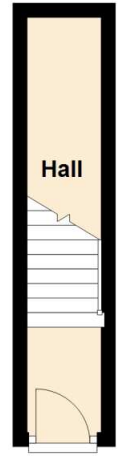


The well appointed accommodation is located entirely on the first floor, creating an elevated sense of privacy and light. At the heart of the home is a spacious and inviting lounge, perfect for relaxation, which leads through to a stylish, modern kitchen. The living quarters include two comfortable bedrooms, with the master bedroom benefiting from its own private en-suite shower room and WC, complemented by a separate, well finished family bathroom.

Practicality is key at this address, with the ground floor providing a secure single garage and a private driveway for convenient off road parking.

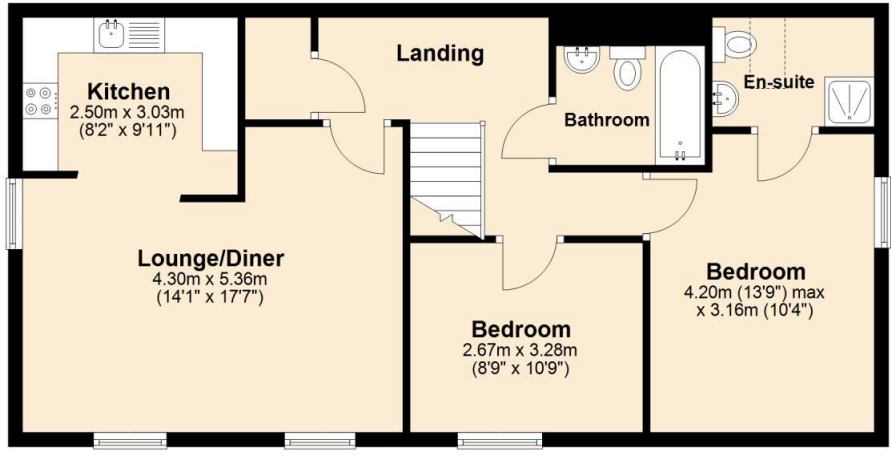
Ground Floor

Approx. 4.5 sq. metres (48.6 sq. feet)



First Floor

Approx. 70.1 sq. metres (754.7 sq. feet)



Total area: approx. 74.6 sq. metres (803.3 sq. feet)



Energy performance certificate (EPC)

41, Rastrick Close
BRIDGNORTH
WV16 5AR

Energy rating

C

Valid until: 17 March 2030

Certificate number: 9138-4031-6247-7320-3250

Property type

Top-floor maisonette

Total floor area

71 square metres

Rules on letting this property

Properties can be rented if they have an energy rating from A to E.

If the property is rated F or G, it cannot be let, unless an exemption has been registered. You can read [guidance for landlords on the regulations and exemptions \(https://www.gov.uk/guidance/domestic-private-rented-property-minimum-energy-efficiency-standard-landlord-guidance\)](https://www.gov.uk/guidance/domestic-private-rented-property-minimum-energy-efficiency-standard-landlord-guidance).

Energy efficiency rating for this property

This property's current energy rating is C. It has the potential to be C.

[See how to improve this property's energy performance.](#)

Score	Energy rating	Current	Potential
92+	A		
81-91	B		
69-80	C	77 c	78 c
55-68	D		
39-54	E		
21-38	F		
1-20	G		

The graph shows this property's current and potential energy efficiency.

Properties are given a rating from A (most efficient) to G (least efficient).

Properties are also given a score. The higher the number the lower your fuel bills are likely to be.

For properties in England and Wales:

the average energy rating is D
the average energy score is 60

Breakdown of property's energy performance

This section shows the energy performance for features of this property. The assessment does not consider the condition of a feature and how well it is working.

Each feature is assessed as one of the following:

- very good (most efficient)
- good
- average
- poor
- very poor (least efficient)

When the description says "assumed", it means that the feature could not be inspected and an assumption has been made based on the property's age and type.

Feature	Description	Rating
Wall	Timber frame, as built, insulated (assumed)	Good
Roof	Pitched, insulated (assumed)	Good
Window	Fully double glazed	Good
Main heating	Boiler and radiators, mains gas	Good
Main heating control	Programmer, room thermostat and TRVs	Good
Hot water	From main system	Good
Lighting	Low energy lighting in 60% of fixed outlets	Good
Floor	To unheated space, insulated (assumed)	N/A
Secondary heating	None	N/A

Primary energy use

The primary energy use for this property per year is 152 kilowatt hours per square metre (kWh/m²).

Environmental impact of this property

One of the biggest contributors to climate change is carbon dioxide (CO₂). The energy used for heating, lighting and power in our homes produces over a quarter of the UK's CO₂ emissions.

An average household produces 6 tonnes of CO₂

This property produces 1.9 tonnes of CO₂

This property's potential production 1.8 tonnes of CO₂

By making the [recommended changes](#), you could reduce this property's CO₂ emissions by 0.1 tonnes per year. This will help to protect the environment.

Environmental impact ratings are based on assumptions about average occupancy and energy use. They may not reflect how energy is consumed by the people living at the property.

How to improve this property's energy performance

Making any of the recommended changes will improve this property's energy efficiency.

If you make all of the recommended changes, this will improve the property's energy rating and score from C (77) to C (78).

Recommendation	Typical installation cost	Typical yearly saving
1. Low energy lighting	£20	£22

Paying for energy improvements

[Find energy grants and ways to save energy in your home.](https://www.gov.uk/improve-energy-efficiency) (<https://www.gov.uk/improve-energy-efficiency>)

Estimated energy use and potential savings

Estimated yearly energy cost for this property	£493
Potential saving	£23

The estimated cost shows how much the average household would spend in this property for heating, lighting and hot water. It is not based on how energy is used by the people living at the property.

The estimated saving is based on making all of the recommendations in [how to improve this property's energy performance](#).

For advice on how to reduce your energy bills visit [Simple Energy Advice](https://www.simpleenergyadvice.org.uk/) (<https://www.simpleenergyadvice.org.uk/>).

Heating use in this property

Heating a property usually makes up the majority of energy costs.

Estimated energy used to heat this property

Space heating	4290 kWh per year
Water heating	2009 kWh per year

Potential energy savings by installing insulation

The assessor did not find any opportunities to save energy by installing insulation in this property.

You might be able to receive [Renewable Heat Incentive payments](https://www.gov.uk/domestic-renewable-heat-incentive) (<https://www.gov.uk/domestic-renewable-heat-incentive>). This will help to reduce carbon emissions by replacing your existing heating system with one that generates renewable heat. The estimated energy required for space and water heating will form the basis of the payments.

Contacting the assessor and accreditation scheme

This EPC was created by a qualified energy assessor.

If you are unhappy about your property's energy assessment or certificate, you can complain to the assessor directly.

If you are still unhappy after contacting the assessor, you should contact the assessor's accreditation scheme.

Accreditation schemes are appointed by the government to ensure that assessors are qualified to carry out EPC assessments.

Assessor contact details

Assessor's name	Tim Gough
Telephone	07778 758568
Email	timgoughpps@gmail.com

Accreditation scheme contact details

Accreditation scheme	Elmhurst Energy Systems Ltd
Assessor ID	EES/001254
Telephone	01455 883 250
Email	enquiries@elmhurstenergy.co.uk

Assessment details

Assessor's declaration	No related party
Date of assessment	17 March 2020
Date of certificate	18 March 2020
Type of assessment	RdSAP
