



15 West End, Witney



15 West End

A fabulous opportunity to purchase this exceptional Grade II listed home, offering a purchaser over 3000sqft of thoughtfully modernised living space in the heart of the town centre.

Council Tax band: F

Tenure: Freehold

EPC Energy Efficiency Rating: F

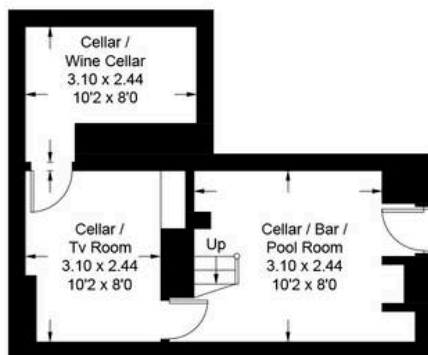
EPC Environmental Impact Rating: F

- A fabulous opportunity to purchase this extended and much improved Grade II listed six-bedroom home situated in a prime town centre location.
- South-facing rear garden with split-level patio, outbuilding and covered style bar/hot tub area.
- Kitchen with quartz worktop, shaker style cupboards, integrated appliances and bi-fold doors leading out to the rear garden.
- Split-level sitting room with exposed beams and two feature fireplaces.
- Spacious basement/cellar offering the perfect space for a games room or gym.
- Master bedroom with ensuite and built-in wardrobes.
- Five additional bedrooms plus the stylish family bathroom with freestanding rolltop bath and separate shower cubicle.

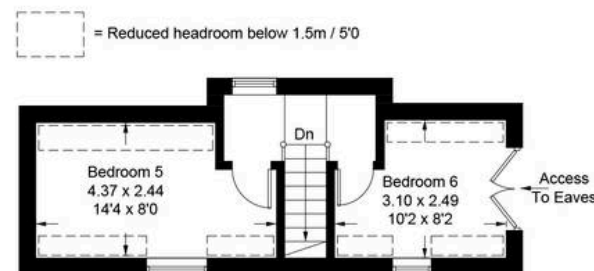


West End - Witney

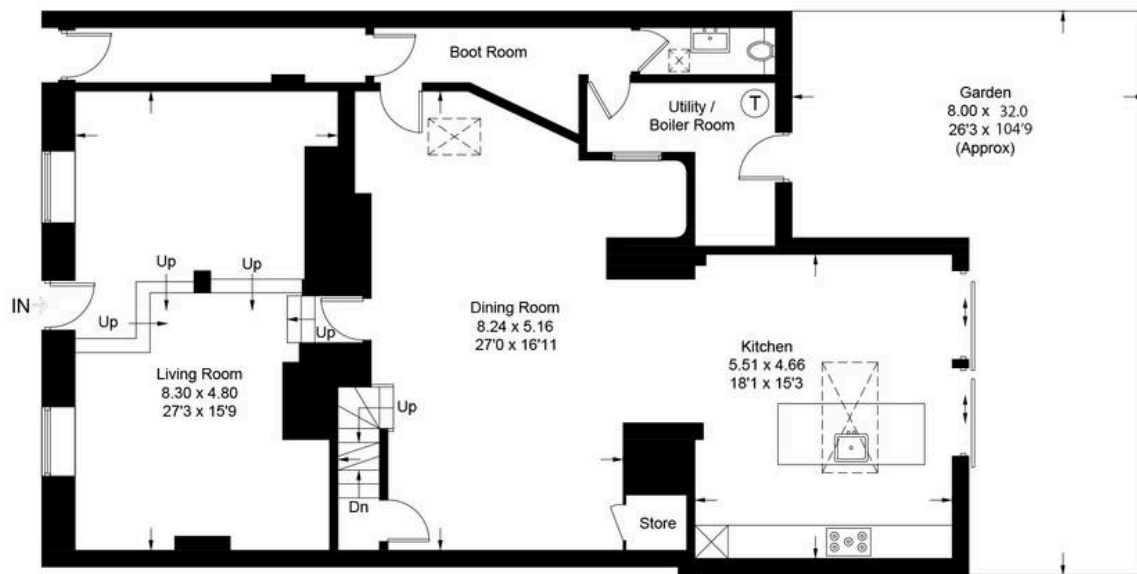
Approximate Gross Internal Area = 281.7 sq m / 3032 sq ft
(Including Cellar)



Lower Ground Floor



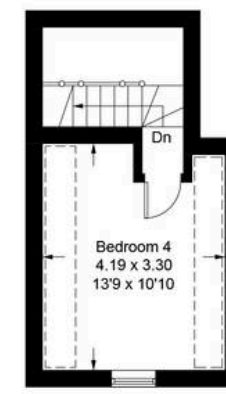
Second Floor 1



Ground Floor



First Floor



Second Floor 2

Illustration for identification purposes only, measurements are approximate,
not to scale. Fourlabs.co © (ID1261778)



Simpsons Witney Branch

4 Langdale Court Witney, Oxfordshire - OX28 6AD

01993 835030 • witney@simpsonsproperty.com • www.simpsonsproperty.com/