



44 Mary Agnes Street

Kenton



MARY AGNES
STREET

44

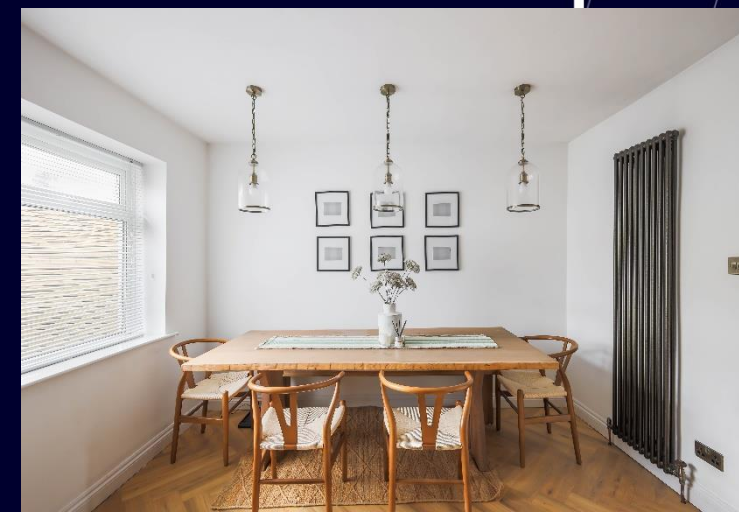
LP21

44 Mary Agnes Street, Kenton, NE3 3XB

Stunning & Fully Renovated End Terraced Home Boasting Three Bedrooms, Refitted Family Bathroom, Generous Sitting Room, Open Plan Kitchen/Diner, Utility & Rear Yard!

This beautifully presented property has undergone a significant transformation during the existing owners tenure and now offers one of the finest terraced homes within the direct locality.

Situated on Mary Agnes Street in Coxlodge, this property benefits from a convenient location close to a variety of local amenities. These include Fawdon Metro Station and regular bus services providing straightforward access to Newcastle city centre. The area also offers a selection of nearby supermarkets, local shops, and well-regarded schools within the immediate catchment.





The internal accommodation comprises: Entrance hallway with staircase leading to first floor | Generous front sitting room with bespoke alcove storage and feature log burning stove | Understairs store | Excellent open plan kitchen/diner, enjoying a range of modern cabinetry/worktops, integrated appliances throughout and central island with breakfast bar | Separate utility room with rear access.

The staircase then leads up to the first floor landing and onto three bedrooms | The principal bedroom offers a comfortable double room to the rear with decorative panelling | Bedroom two is a further double room | Bedroom three, currently being utilised as a study/dressing room | Stunning family bathroom with contemporary four piece suite.

Externally, the property boasts an enclosed rear yard with artificial turf. Early viewings are strongly encouraged to truly appreciate the quality of accommodation on offer at this wonderful end terraced home!

Services: Mains gas, electricity, water & drainage | Tenure: Freehold | Council Tax: Band B | EPC: Rating TBC

Price Guide: Offers Over £195,000



A built-in media unit in a light grey color. It features a large black TV mounted on a shelf. Above the TV are several open shelves holding decorative items: a framed picture, a white pitcher, books, a wooden knot sculpture, and a teal mug. Below the TV are four cabinet doors with brass handles.

A fireplace area with a light-colored wall. A wooden mantel sits above a black wood-burning stove. A circular mirror with a metal frame hangs on the wall above the mantel. To the left of the stove are fireplace tools. To the right is a small potted plant.

A built-in shelving unit on the right wall. It has open shelves holding books, a lamp, and a stack of firewood. Below the shelves are two cabinet doors with brass handles.

A window with white horizontal blinds. On the windowsill, there is a small lamp and other decorative objects. A radiator is visible below the window.

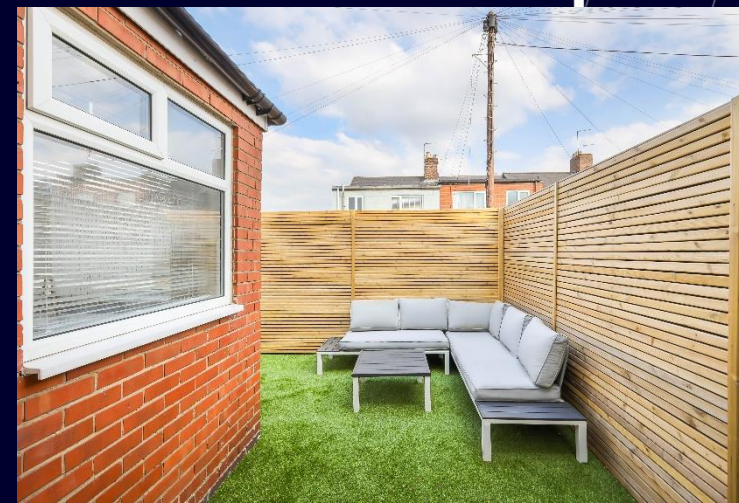
A small, light-colored upholstered sofa with two orange and patterned throw pillows. It is positioned near the window and a radiator.

A large, light-colored sectional sofa in the foreground, featuring several throw pillows in orange, green, and patterned designs.

A round chandelier with a metal frame and numerous clear glass crystals hanging from it.



Floorplans
Coming soon...





SANDERSON YOUNG

Regional Gosforth Office
95 High Street | Gosforth
Newcastle upon Tyne | NE3 4AA
gosforth@sandersonyoung.co.uk
0191 213 0033