



Ashley Gardens, SW1P

£2,475,000

Dexters



Ashley Gardens, SW1P

This is a magnificent apartment in a Victorian mansion block with two/three bedrooms, wonderful entertaining space and many period features. This property has been finished to a wonderful standard and benefits from three balconies.

The impressive reception room has high ceilings with detailed cornices, an attractive fireplace, large bay windows and there is access to one of the balconies. The dining room is spacious and filled with natural light.

There are two large bedrooms, once of which comprises of an en-suite bathroom and the principle bedroom leads onto a further balcony. There is a separate eat-in kitchen and family bathroom.

Ashley Gardens is situated within the Westminster Cathedral Conservation Area, the Cathedral with its charming piazza is just a few minutes away. Victoria Station is close by with mainline trains to the south and southeast of England, Gatwick Express and the tube station with connections to take you around London. The bus station has numerous routes that will give you access to many areas of the city.

Features

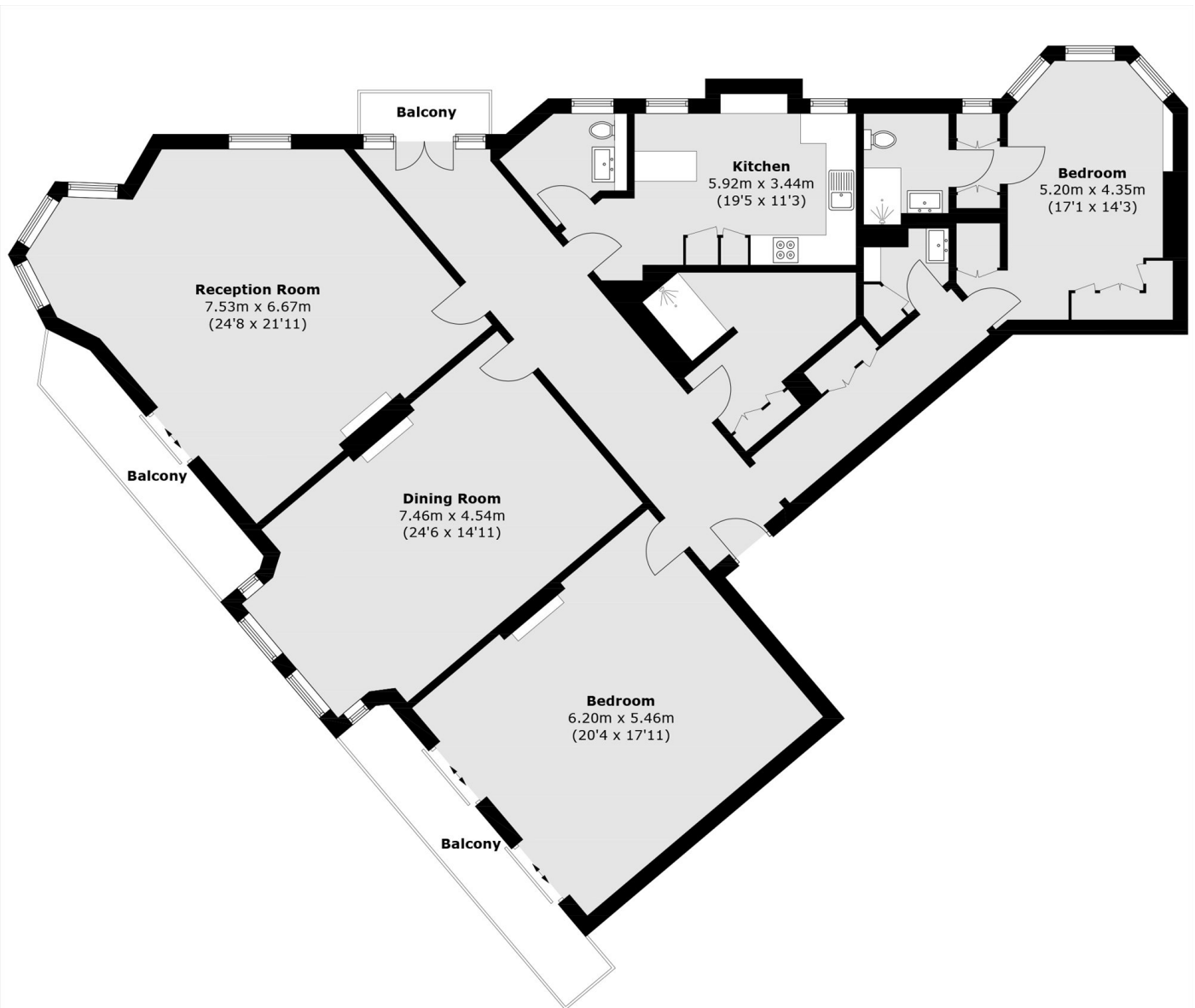
- Two Bedrooms
- Two Bathrooms
- Three Balconies
- Separate Kitchen
- Period Features
- Victoria Station







Ashley Gardens, London, SW1P



Second Floor

Total area (approx.): 200.0 sq. m (2,152.8 sq. ft)
Balcony: 18.0 sq. m (193.7 sq. ft)