



## Wood Crescent, W12

£600,000

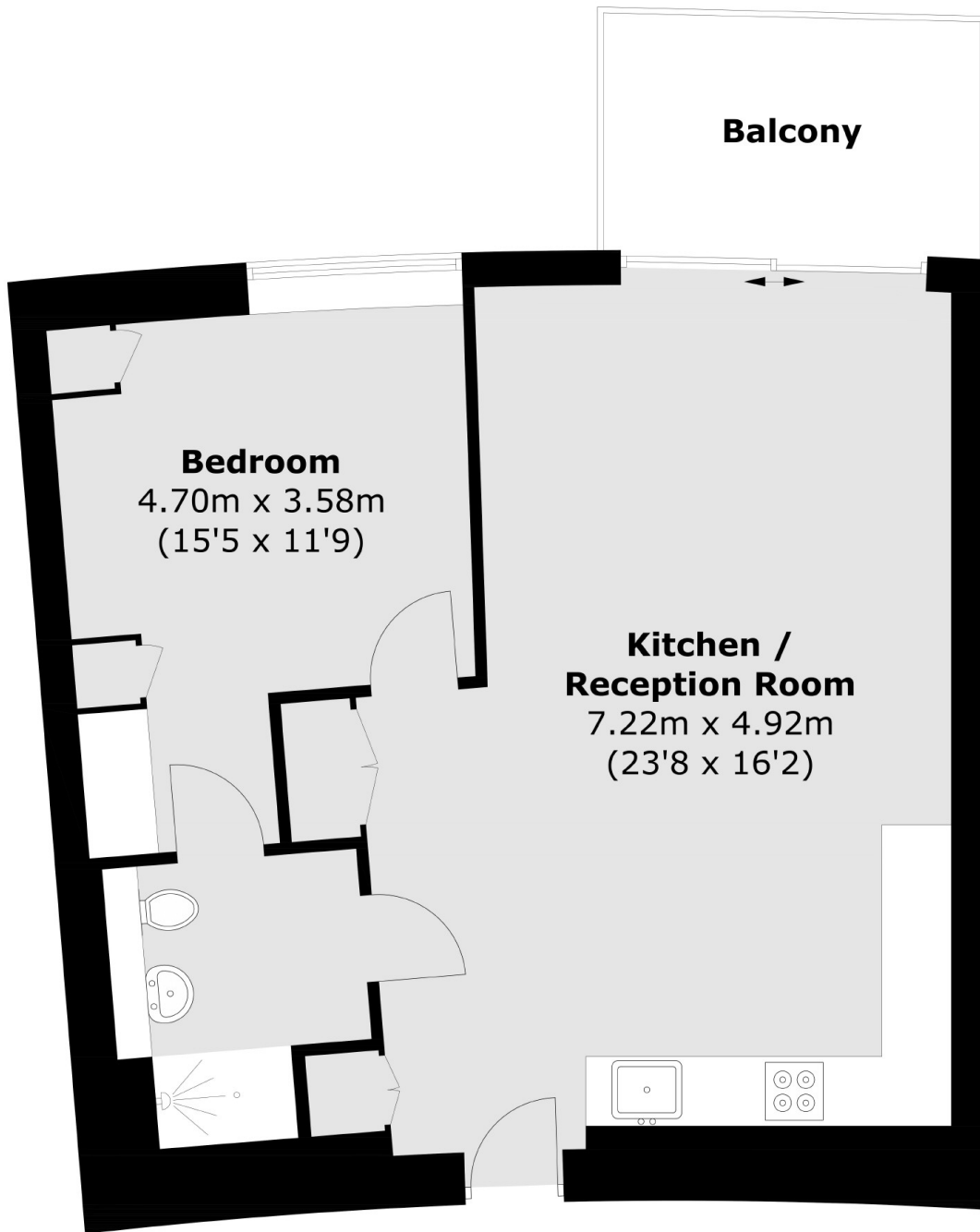
A wonderfully bright and modern one bedroom apartment in the state of the art Television Centre. This flat benefits from open plan kitchen living, a private balcony, swimming pool, gym, cinema room and with 24 hour concierge.

Television Centre is situated in West London on the edge of Shepherd's Bush next to Westfield Shopping centre and Hammersmith park.

### Features

- One Bedroom
- Private Terrace
- 24 Hour Concierge
- Iconic Grade II Listed Building
- Gym/Swimming Pool
- Cinema Room

Wood Crescent,  
London, W12



Total area (approx.): 54.8 sq. m (589.9 sq. ft)  
Balcony area (approx.): 6.6 sq. m (71 sq. ft)