



Woodmill Lane, Southampton SO18 2PA

welcome to

Woodmill Lane, Southampton

* TWO BEDROOM DETACHED BUNGALOW * MODERN KITCHEN/DINER * CONSERVATORY * DRIVEWAY * GENEROUS REAR GARDEN * CLOSE TO LOCAL AMENITIES * GREAT LOCATION *

Front

Paved driveway with side access, access to property.

Entrance Hall

Wooden floor, access to all rooms, gas radiator.

Lounge

15' 7" x 10' 1" (4.75m x 3.07m)

Gas radiator, carpeted, leading to;

Conservatory

Double glazed windows to the side aspect, patio doors leading to garden.

Kitchen/Diner

17' 5" x 17' 2" (5.31m x 5.23m)

Wall and base cupboard units, double integrated oven, integrated microwave, gas hob, overhead extractor, sink and drainer, integrated appliances, double glazed window to the side aspect, open plan leading to conservatory.

Bedroom One

14' 8" x 9' 6" (4.47m x 2.90m)

Double glazed bay window to the front aspect, gas radiator, built in wardrobe, wooden floor.

Bedroom Two

11' 7" x 9' 6" (3.53m x 2.90m)

Double glazed bay window to the front aspect, gas radiator, carpeted.

Shower Room

Walk-in shower, low level w/c, wash hand basin unit, double glazed window to the side aspect.

Rear Garden

Generous rear garden with patio area for seating and laid to lawn.





Fox & Sons are delighted to welcome to the market this well-presented two-bedroom detached bungalow situated in the highly sought-after area of Bitterne Park.

Set in a fantastic location close to a range of local amenities, transport links, and well-regarded schools, this charming bungalow offers comfortable and versatile accommodation throughout.

The property features a welcoming lounge and a spacious modern kitchen/diner. which flows through to a bright conservatory overlooking the garden. There is a contemporary shower room and two generously sized bedrooms, both offering comfortable living space.

Externally, the home benefits from a generous rear garden, providing an excellent outdoor space to relax or entertain. To the front, there is a private driveway offering off-road parking for two vehicles.



view this property online fox-and-sons.co.uk/Property/BIT113161



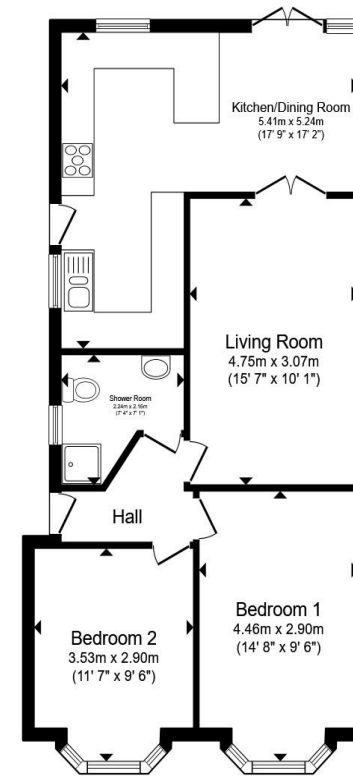
welcome to

Woodmill Lane, Southampton

- Detached Bungalow
- Two Bedrooms
- Modern Kitchen/Diner
- Conservatory
- Driveway

Tenure: Freehold EPC Rating: D
Council Tax Band: C

£315,000



Total floor area 65.5 m² (705 sq.ft.) approx

This floor plan is for illustrative purposes only. It is not drawn to scale. Any measurements, floor areas (including any total floor area), openings and orientation are approximate. No details are guaranteed, they cannot be relied upon for any purpose and they do not form part of any agreement. No liability is taken for any error, omission or misstatement. A party must rely upon its own inspection(s). Powered by www.propertybox.io



view this property online fox-and-sons.co.uk/Property/BIT113161



Property Ref:
BIT113161 - 0002

1. MONEY LAUNDERING REGULATIONS Intending purchasers will be asked to produce identification documentation at a later stage and we would ask for your co-operation in order that there is no delay in agreeing the sale. 2. These particulars do not constitute part or all of an offer or contract. 3. The measurements indicated are supplied for guidance only and as such must be considered incorrect. Potential buyers are advised to recheck measurements before committing to any expense. 4. We have not tested any apparatus, equipment, fixtures or services and it is in the buyers interest to check the working condition of any appliances. 5. Where an EPC, or a Home Report (Scotland only) is held for this property, it is available for inspection at the branch by appointment. If you require a printed version of a Home Report, you will need to pay a reasonable production charge reflecting printing and other costs. 6. We are not able to offer an opinion either written or verbal on the content of these reports and this must be obtained from your legal representative. 7. Whilst we take care in preparing these reports, a buyer should ensure that his/her legal representative confirms as soon as possible all matters relating to title including the extent and boundaries of the property and other important matters before exchange of contracts.



023 8044 6724



Bitterne@fox-and-sons.co.uk



390c Bitterne Road, Bitterne, SOUTHAMPTON,
Hampshire, SO18 5RS



fox-and-sons.co.uk