

4 Bonningtons Yard Station Road

Takeley, Bishop's Stortford

Beautifully designed from floorboard to rafter, welcome to Bonningtons Yard. Three double ensuite bedrooms, open plan living plus a spacious private garden with Essex countryside views - this new build home set within a gated development is completely first class.

Council Tax band: TBD

Tenure: Freehold

- Stunning new build home
- Three ensuite bedrooms
- Private garden with countryside views
- Open Plan Kitchen / Dining / Living Area
- Utility room
- Gated development of nine exclusive homes



Hallway

Open Plan Kitchen / Living / Diner

30' 8" x 6' 0" (9.34m x 1.83m)

Utility Room

12' 9" x 8' 11" (3.89m x 2.72m)

WC

Bedroom

16' 1" x 14' 2" (4.90m x 4.32m)

Ensuite shower room

Bedroom

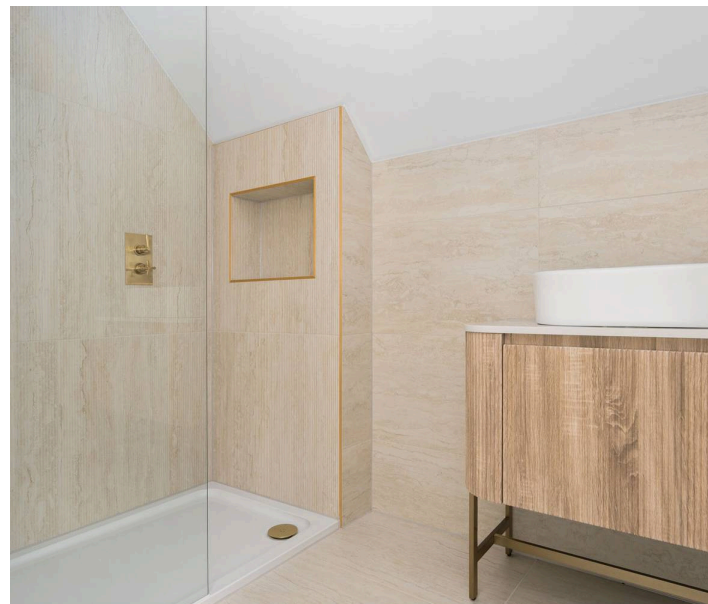
16' 2" x 13' 8" (4.92m x 4.16m)

Ensuite bathroom

Bedroom

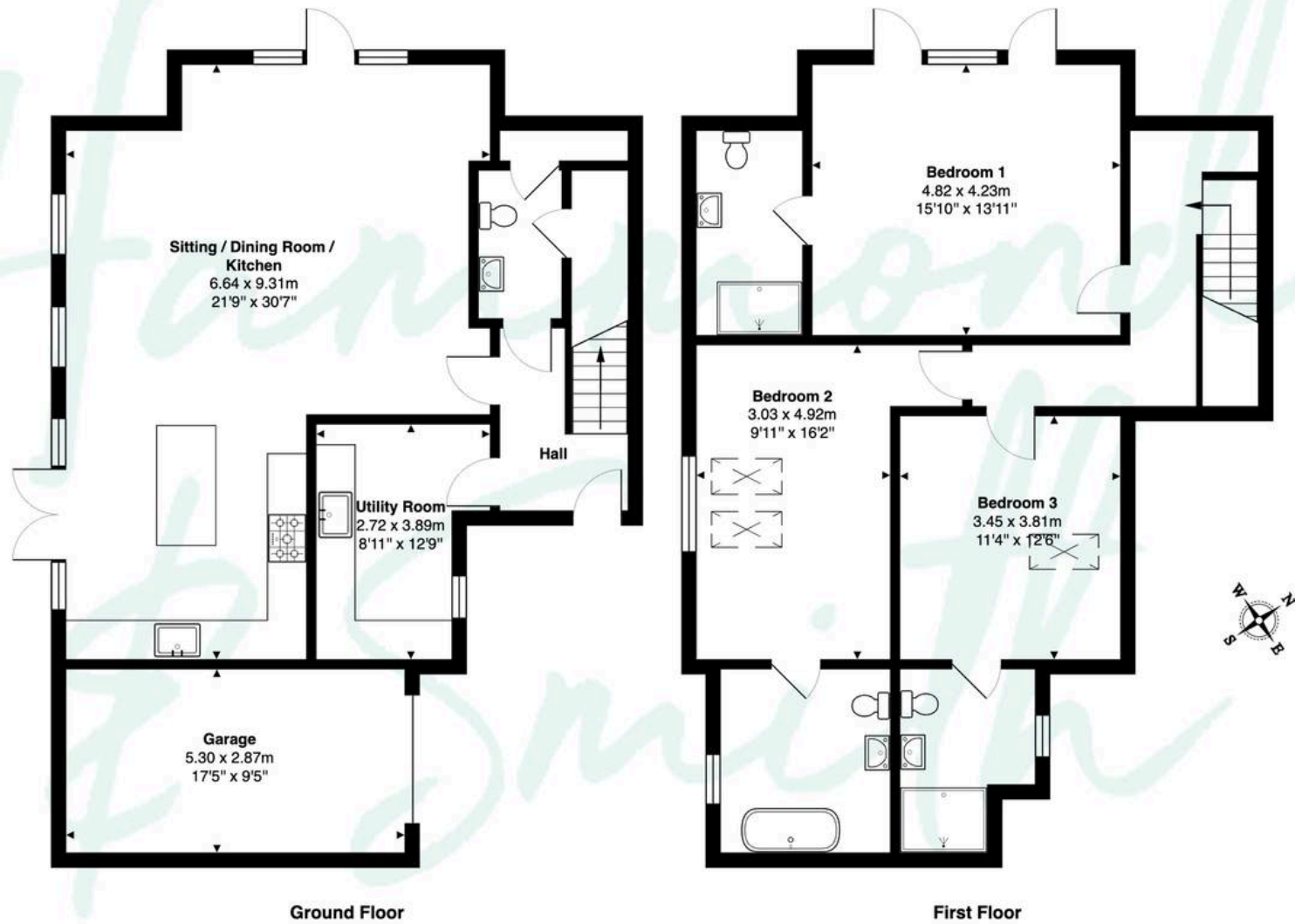
18' 5" x 12' 6" (5.61m x 3.81m)

Ensuite shower room





4 Bonningtons Yard, Takeley, Bishop's Stortford, CM22 6SQ



Total Area: 170.7 m² ... 1838 ft²

This floor plan is for illustrative purposes only and is not to scale.
Measurements are approximate and intended as a guide. All details should be verified independently.