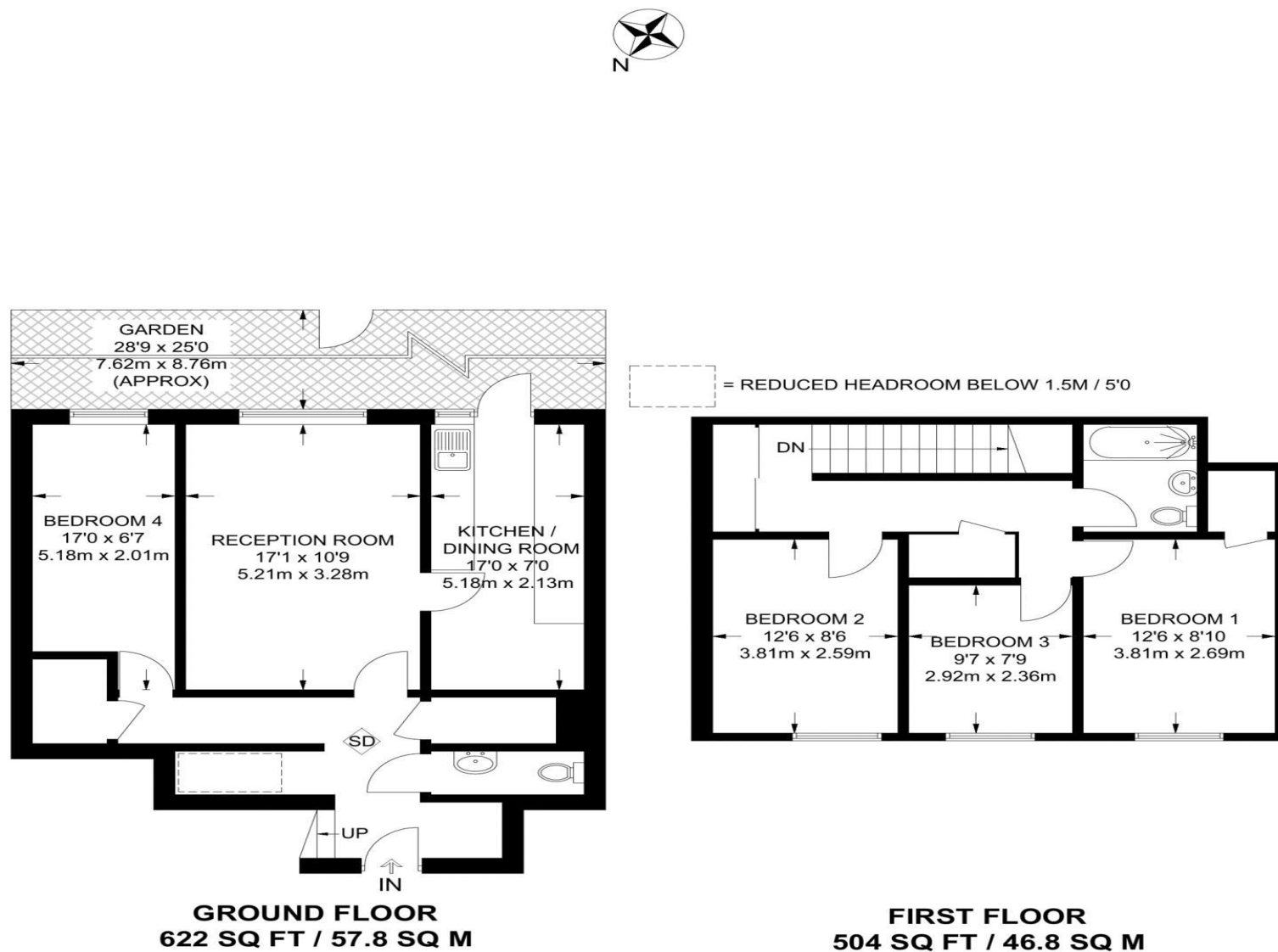


the floorplan...



more details from...

call: **Brian Cox Greenford: 0208 578 1004**
email: emma.gerald@brian-cox.co.uk
web: www.brian-cox.co.uk



Consumer Protection from Unfair Trading Regulations 2008 We have not tested any apparatus, equipment, fixtures, fittings or services and so cannot verify that they are in working order or fit for purpose. You are advised to obtain verification from your solicitor or surveyor. References to the tenure of a property are based on information supplied by the seller. We have not had sight of the title documents and a buyer is advised to obtain verification from their solicitor. Items shown in photographs are not included unless specifically mentioned within the sales particulars, but may be available by separate negotiation. We advise you to book an appointment to view before embarking on any journey to see a property, and check its availability.



0208 578 1004
brian-cox.co.uk

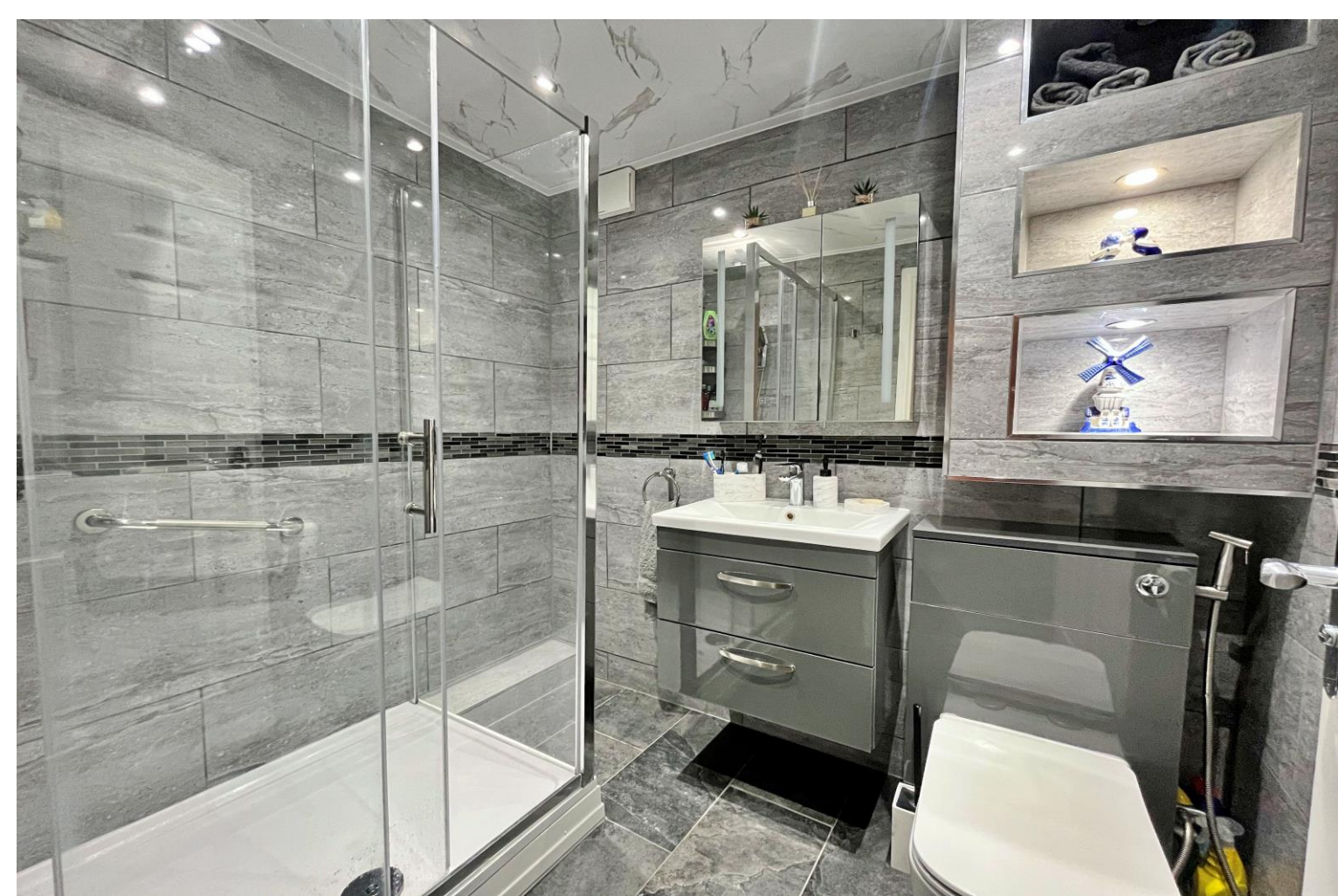


FOUR BEDROOM - SUBSTANTIAL SPLIT-LEVEL MAISONETTE - GARDEN - VIEW NOW. Brian Cox and Company are delighted to bring to the market this larger than average maisonette. Which boasts four good sized bedrooms as well as a fitted kitchen, fully tiled modern family bathroom, downstairs w/c, lounge and private garden. This family home is located within easy access to local shops and public transport as well as being within a moments reach of A40 for those that drive. Viewings are highly recommended to fully appreciate the size on offer, so call now to arrange yours!!



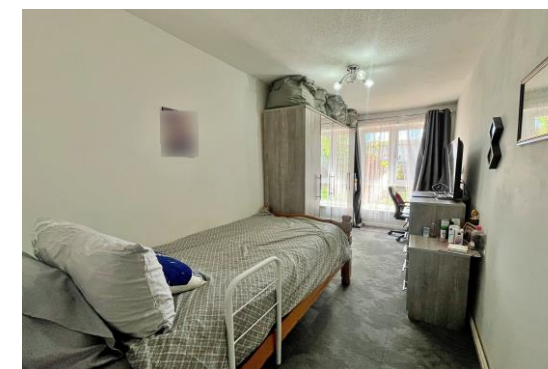
£420,000
Leasehold

Silvertree Lane, Greenford, UB6 8XD



in brief...

- Four Bedroom
- Split-Level Maisonette
- Long Lease
- Private Rear Garden
- Double Glazed / Gas Central Heating
- Downstairs W/C



the location...

nearest stations ...

- South Greenford (0.4 miles)
- Greenford (0.6 miles)
- Castle Bar Park (1.0 miles)

Greenford is a large suburb in the London Borough of Ealing in West London, UK. It was an ancient parish in the historic county of Middlesex.

There are several local primary schools in the area which include Edward Betham Church of England Primary School, Coston Primary School, Oldfield Primary School and Ealing Primary Centre.

If you have older children there are also local secondary schools nearby, some of these include William Perkin Church of England High School, Brentside High School and The Cardinal Wiseman Catholic School.