



Courtfield Gardens, SW5

£553 Per week

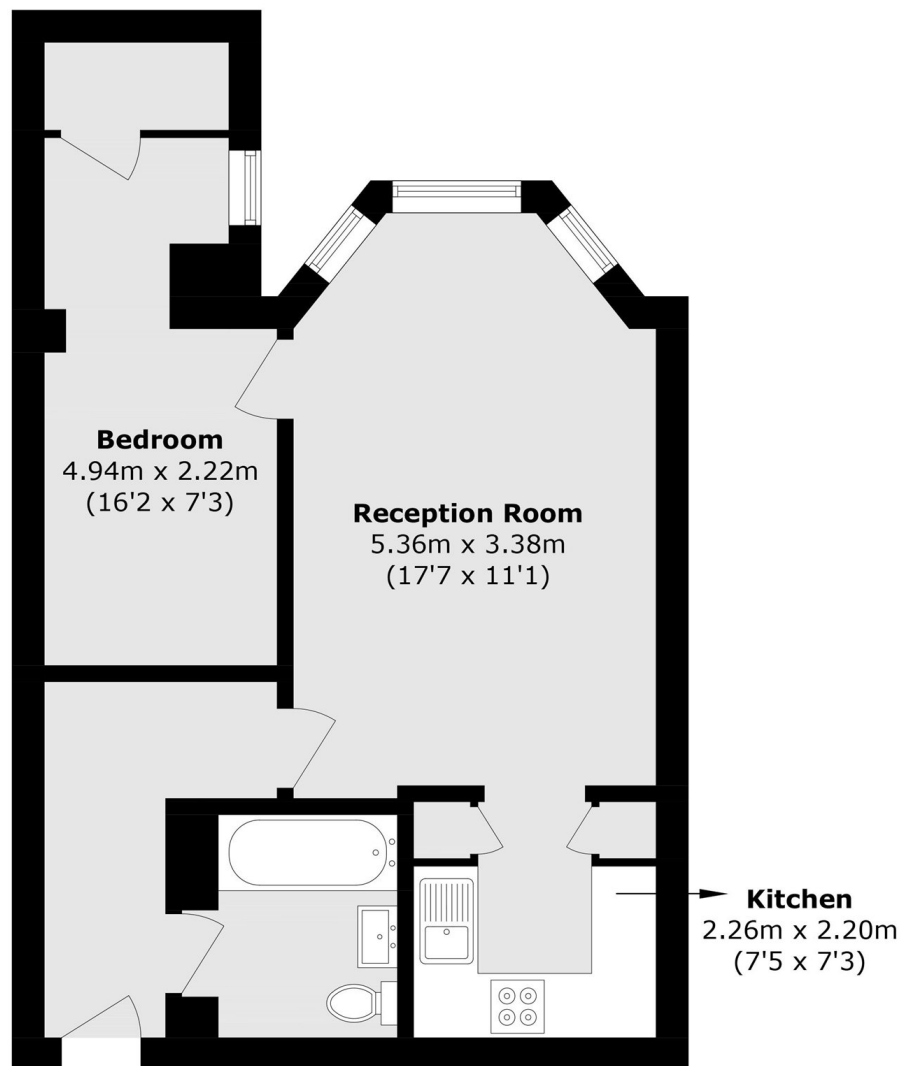
This newly refurbished one bedroom property is set on the lower ground floor of an attractive building in Courtfield Gardens. It offers a bright reception room, a double bedroom, a modern fully fitted kitchen with appliances, and a bathroom with a shower over the bath.

The property is ideally situated within a short walk of Gloucester Road Station, with a range of shops, including Waitrose and Sainsbury's, easily accessible.

Features

- Bright Reception Room
- One Bedroom
- Fully Fitted Kitchen
- Wooden Flooring
- Access to Communal Gardens
- Excellent Location

Courtfield Gardens, London, SW5



Lower Ground Floor

Total area (approx.): 44.6 sq. m (480.0 sq. ft)