

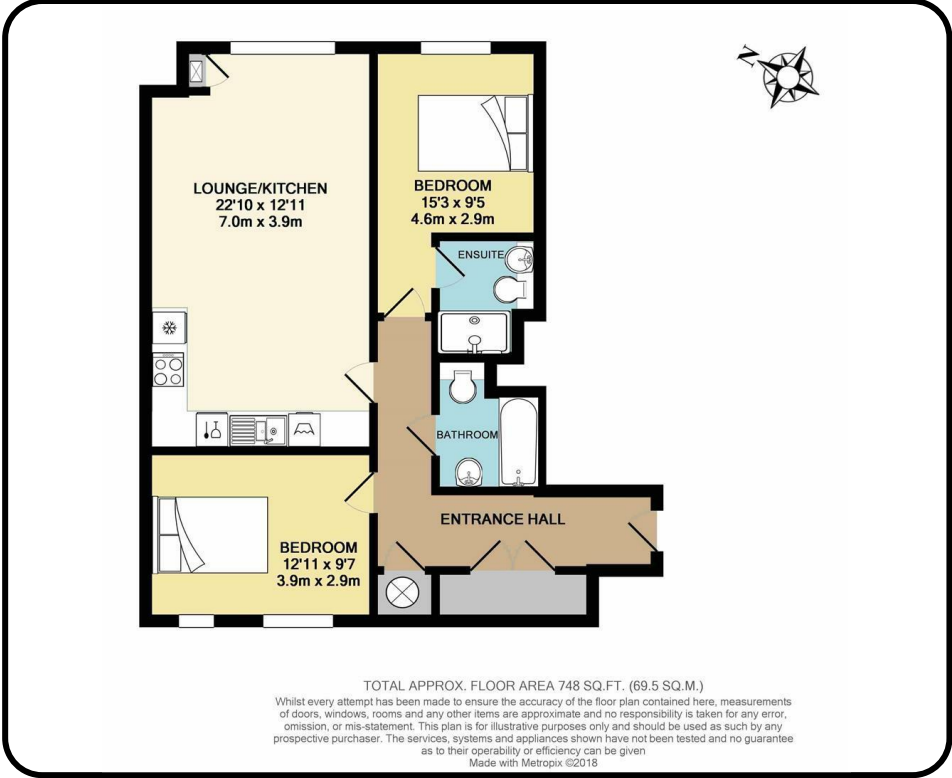
2 Milton Place, 2 Broom Field Way, Felpham, Bognor Regis, West Sussex, PO22 8FD  
£1,100 Per Calendar Month Per Calendar Month     Deposit £1,269  
Available from 30th January 2026

**FARNDSELL**  
ESTATE AGENTS



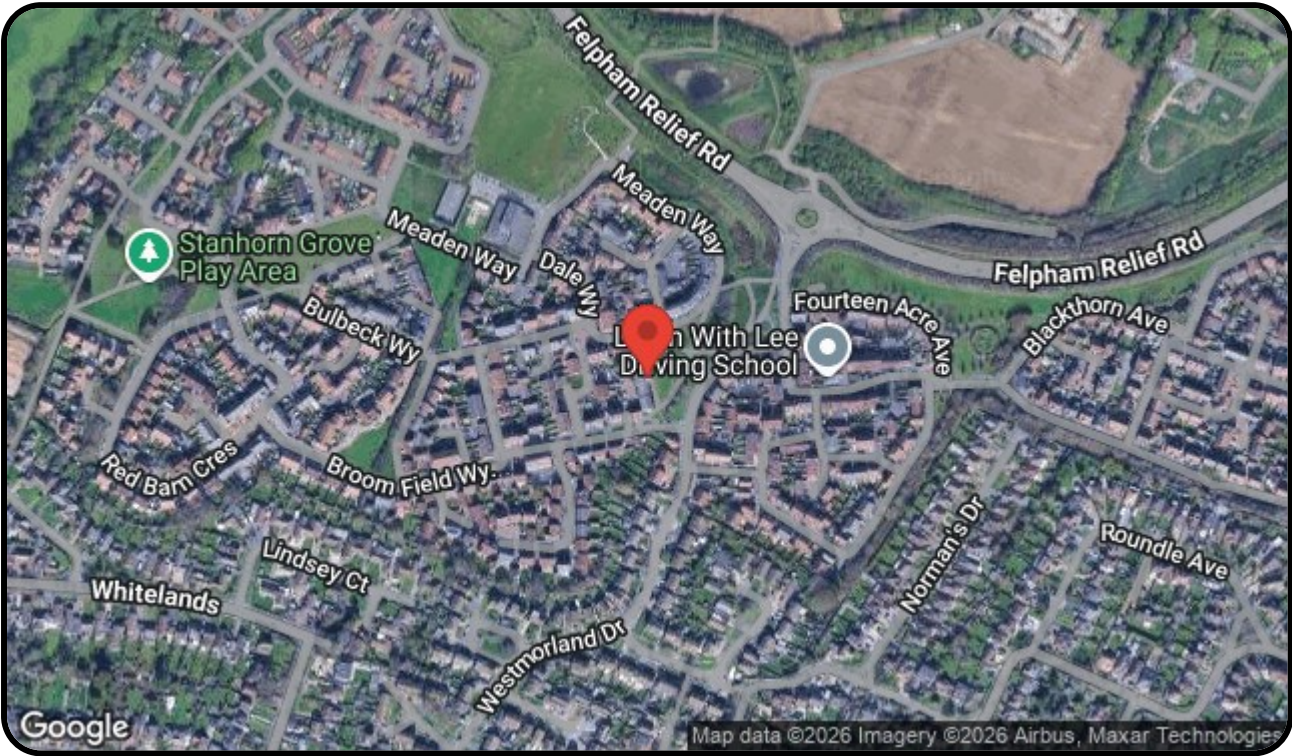



- Spacious Ground Floor Apartment
- Open Plan Lounge and Kitchen
- Master Bedroom with En-Suite Shower Room
- Further Double Bedroom
- Family Bathroom
- Gas Central Heating
- uPVC Double Glazed
- Allocated Parking Space
- Bognor Regis Town Centre & Railway Station approximately 3 miles



**FARNDELL**  
ESTATE AGENTS

79 Aldwick Road  
Bognor Regis  
West Sussex  
PO21 2NW  
01243 869991  
lettings@farndells.com  
<http://www.farndells.com>



| Energy Efficiency Rating                    |   |           |
|---|---|-----------|
|   | Current   | Potential |
| Very energy efficient - lower running costs |   |           |
| (92 plus) <b>A</b>                          |   |           |
| (81-91) <b>B</b>                            | <b>81</b>   | <b>81</b> |
| (69-80) <b>C</b>                            |   |           |
| (55-68) <b>D</b>                            |   |           |
| (39-54) <b>E</b>                            |   |           |
| (21-38) <b>F</b>                            |   |           |
| (1-20) <b>G</b>                             |   |           |
| Not energy efficient - higher running costs |   |           |
| England & Wales                             | EU Directive 2002/91/EC  |           |

Council Tax Band B