



Park Hall Road, SE21 | Offers In Excess Of £400,000

02087028111

[dulwichvillage@pedderproperty.com](mailto:dulwichvillage@pedderproperty.com)

**pedder**  
We live local





# In General

- Attractive period building
- Upgraded and modernised to a high standard
- Two bedrooms
- Two bathrooms
- Integrated kitchen
- Very well presented
- Popular location

# In Detail

An attractive two bedroom, period conversion apartment located on this popular residential road on Park Hall Road, West Dulwich, SE21.

The property has been upgraded and modernised to a high standard creating a very well presented interior. The accommodation has a gross internal area of 531 sq ft and comprises of two bedrooms (both with en-suites), spacious open plan kitchen/lounge, integrated kitchen.

Park Hall Road is well located within easy reach of West Dulwich and Dulwich Village with their parks, outstanding schools and numerous independent shops, cafes and restaurants. Excellent rail links to central London are from nearby West Dulwich (London Victoria/London Blackfriars), West Norwood (London Bridge/London Victoria) and Tulse Hill (London Bridge/London Blackfriars).

Internal viewing of this lovely apartment is advised.

EPC: C | Council Tax Band: C | Lease: 978 years remaining | GR: £250 pa | SC: Ad Hoc | BI: £403 pa

1

2

3

4

5

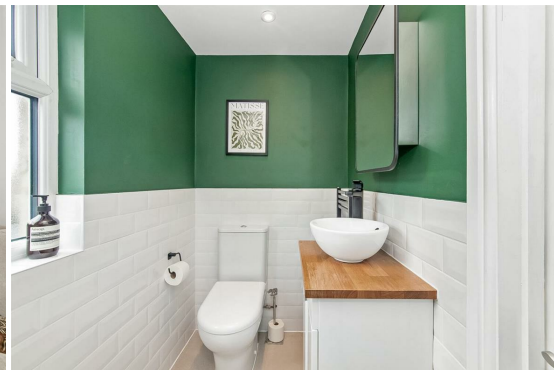
6

7

8

9

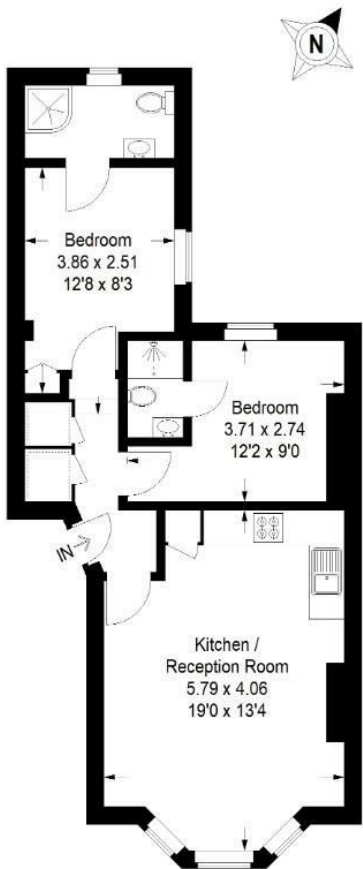
10



# Floorplan

Park Hall Road, SE21

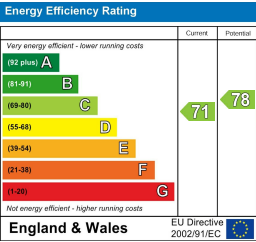
Approximate Gross Internal Area  
49.3 sq m / 531 sq ft



## Raised Ground Floor

= Reduced headroom below 1.5 m / 5'0

Copyright [www.pedderproperty.com](http://www.pedderproperty.com) © 2026  
These plans are for representation purposes only as defined by RICS - Code of Measuring Practice. Not drawn to Scale. Windows and door openings are approximate. Please check all dimensions, shapes and compass bearings before making any decisions reliant upon them.



Pedder Property Ltd trading as Pedder for themselves and for the vendor/landlord of this property whose agents they are, give notice that (1) these particulars do not constitute any part of an offer or contract, (2) all statements contained within these particulars are made without responsibility on the part of Pedder or the vendor/landlord, (3) whilst made in good faith, none of the statements contained within these particulars are to be relied upon as a statement of representation or fact, (4) any intending purchaser/tenant must satisfy him/herself by inspection or otherwise as to the correctness of each of the statements contained within these particulars, (5) the vendor/landlord does not make or give either Pedder or any person in their employment any authority to make or give representation or warranty whatsoever in relation to this property.