



Porchester Square Mews, W2

£1,038 Per week

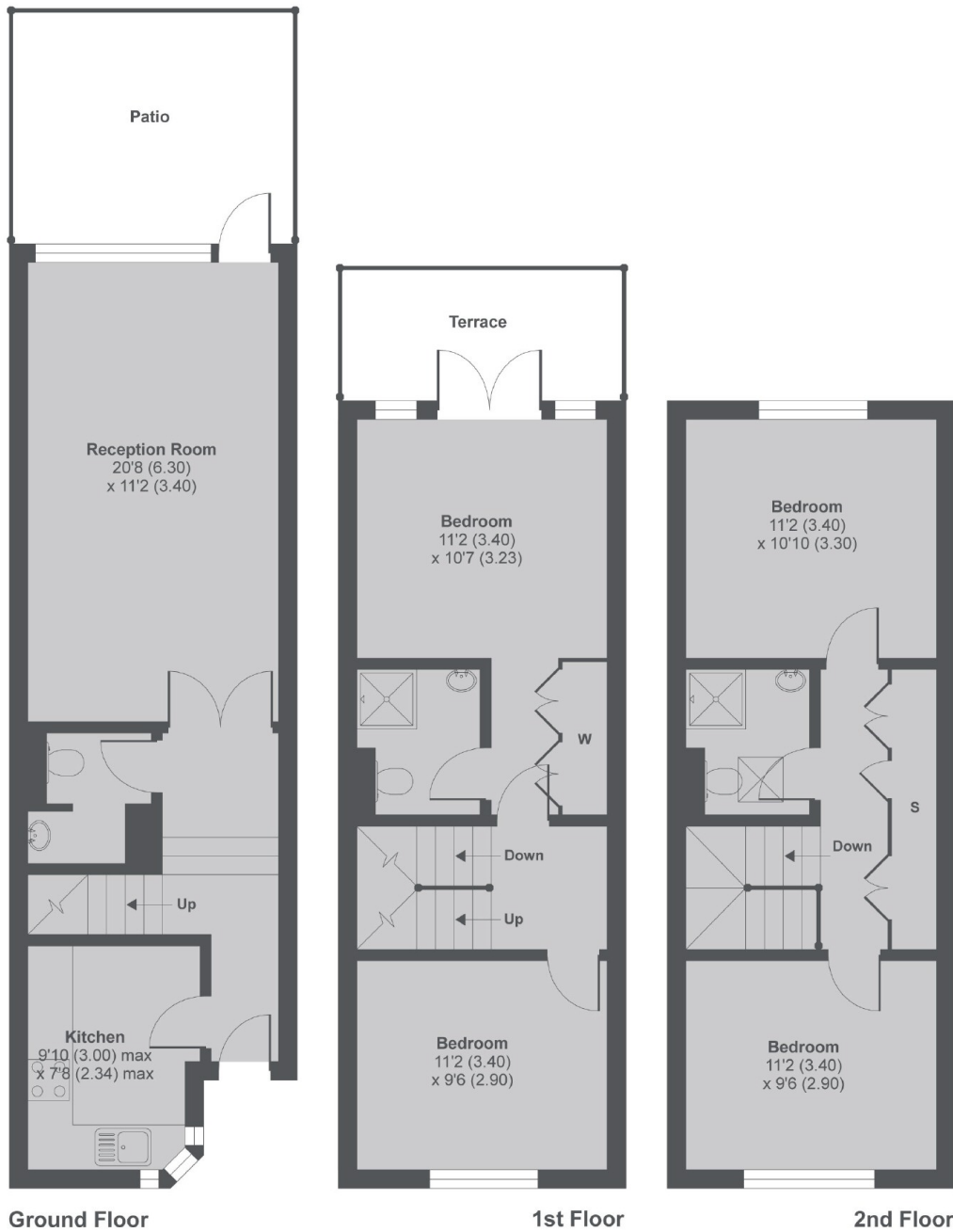
A spacious and newly refurbished four bedroom townhouse on a secluded mews in Bayswater. Layout includes a private patio, two bathrooms, downstairs WC and a balcony off of the master bedroom.

Porchester Square Mews is moments from Queensway, Hyde Park and Westbourne Grove and within easy reach of Paddington and the Heathrow Express

Features

- Four Bedrooms
- Mews House
- Two Bathrooms
- Patio
- Newly Refurbished
- Mews House

Porchester Square Mews, London, W2



Porchester Square Mews W2

MAIN HOUSE APPROX FLOOR AREA 1179 SQ.FT 109.5 SQ.M

Copyright nichecom.co.uk 2017 Produced for Dexters REF : 198085

Dexters

Hyde Park and Bayswater
4-5 Spring Street
London
W2 3RA
Lettings
020 7298 1560

Energy Rating: D. We aim to make our particulars both accurate and reliable. However they are not guaranteed; nor do they form part of an offer or contract. If you require clarification on any points then please contact us, especially if you're traveling some distance to view. Please note that appliances and heating systems have not been tested and therefore no warranties can be given as to their good working order.



dexters.co.uk