

Lysander House, Josiah Drive

Ickenham • Middlesex • UB10 8FB

PCM: £1,600 PCM



coopers
est 1986



Available to the market is this one bedroom first floor retirement apartment that also benefits from a Juliet balcony. Lysander House is an age exclusive retirement development set in Ickenham for over 70's. Developed by the awarding winning McCarthy and Stone the homes have been meticulously designed to offer luxury, convenient and independent living with the peace of mind of access to a 24 hour on site management and care team.

First floor

One bedroom apartment

24 emergency call system

Spacious interior

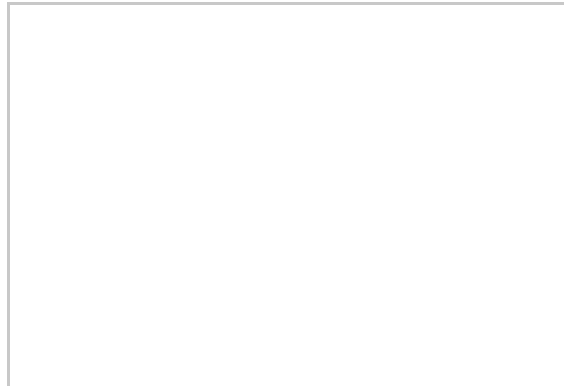
Integrated kitchen appliances

Level access shower room

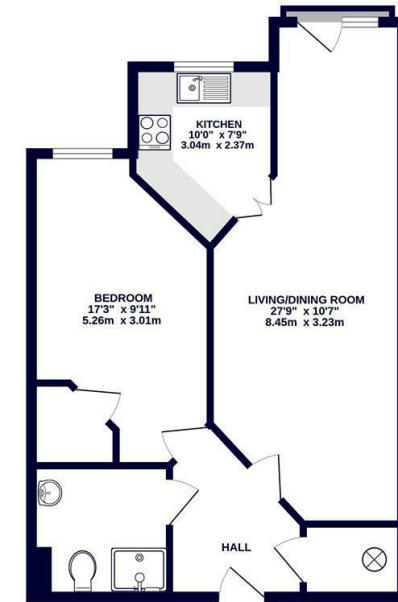
Near to train links

Close to Ickenham High Street

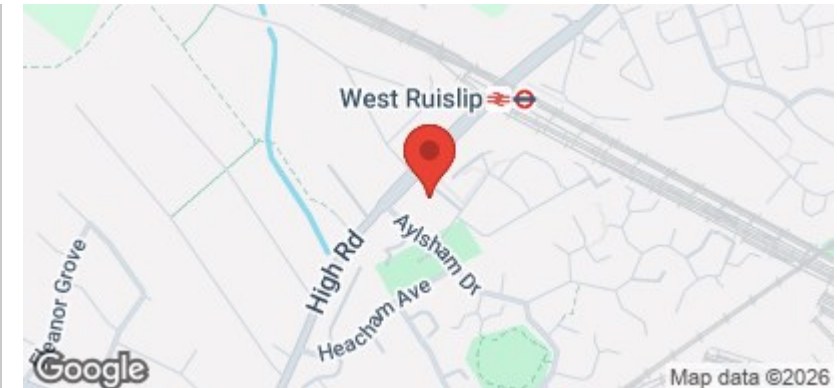
Easy access to A40/M40/M25



GROUND FLOOR
588 sq.ft. (54.7 sq.m.) approx.



TOTAL FLOOR AREA: 588 sq.ft. (54.7 sq.m.) approx.
Whilst every attempt has been made to ensure the accuracy of the floorplan contained here, measurements of doors, windows, rooms and any other items are approximate and no responsibility is taken for any omission or mis-statement. This plan is for illustrative purposes only and should be used as such by any prospective purchaser. The services, systems and appliances shown have not been tested and no guarantee is given as to their condition or efficiency may be given.
Made with Metropix C2020



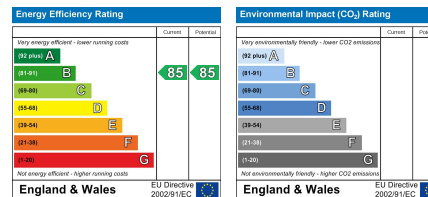
Available Date

20th May 2026

01895 625 625

126-128 High Street, Ruislip,
Middlesex, HA4 8LL
rl@coopersresidential.co.uk

CoopersResidential.co.uk



Important Notice: These particulars, whilst believed to be accurate are set out as a general outline only for guidance and do not constitute any part of an offer or contract. Intending purchasers should not rely on them as statements or representation of fact, but must satisfy themselves by inspection or otherwise has the authority to make or give any representation or warranty in respect of the property.

coopers
est 1986