



302 Thornaby Road , Stockton-On-Tees, TS17 8PJ

AVAILABLE NOW – SORRY NO PETS OR SMOKERS

This three bedroom mid-terrace house is conveniently located in the sought after area of Thornaby, offering excellent access to well regarded primary and secondary schools, Thornaby Town Centre and Teesside Park. Superb transport links are available via local bus routes, the A66, A19 and Thornaby Train Station, making this a highly desirable rental property.

The accommodation briefly comprises an entrance hallway leading to a lounge, a kitchen fitted with a wide range of units and an integrated oven and gas hob, and a convenient downstairs W/C. To the first floor are three well proportioned bedrooms and a family bathroom. The property benefits from gas central heating.

Externally, there is a gravelled area to the front providing off-road parking, while to the rear is a lawned garden with a patio area and a brick outhouse offering useful additional storage.

£750 PCM

302 Thornaby Road

, Stockton-On-Tees, TS17 8PJ



- MID-TERRACE HOUSE
- 3 BEDROOMS
- DOWNSTAIRS W/C
- KITCHEN WITH INTEGRATED OVEN & HOB
- OFF-ROAD PARKING
- REAR GARDEN WITH OUTHOUSE
- AVAILABLE NOW
- CLOSE TO AMENITIES

HALL

LOUNGE

13'06" x 11'03" (4.11m x 3.43m)

KITCHEN

16'04" x 8'10" (4.98m x 2.69m)

W/C

BEDROOM ONE

16'0" x 8'11" (4.88m x 2.72m)

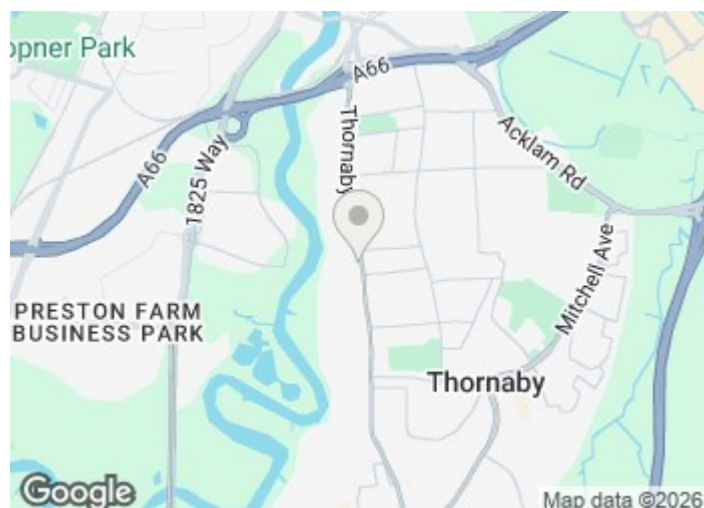
BEDROOM TWO

11'11" x 9'09" (3.63m x 2.97m)

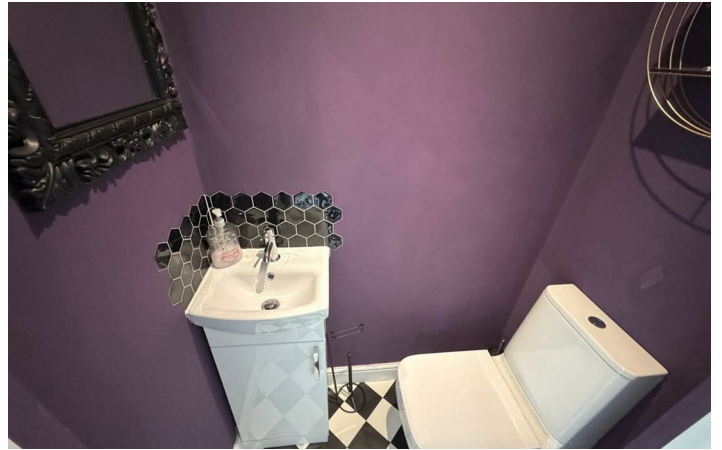
BEDROOM THREE

9'01" x 7'05" (2.77m x 2.26m)

BATHROOM



Directions





Floor Plan

These particulars, whilst believed to be accurate are set out as a general outline only for guidance and do not constitute any part of an offer or contract. Intending purchasers should not rely on them as statements of representation of fact, but must satisfy themselves by inspection or otherwise as to their accuracy. No person in this firms employment has the authority to make or give any representation or warranty in respect of the property.

