



83 West Road, London – E15 3PX

£700,000 Freehold

Fully extended and refurbished Victorian terrace • Five bedrooms, two bathrooms across three floors • Spacious modern kitchen with direct garden access • Bright bay-fronted reception and separate dining area • Loft conversion providing two versatile bedrooms • Private low-maintenance garden with patio area • Over 1,450 sq ft of internal living space • Offered chain free and ready to move in • Located close to West Ham Park and Stratford amenities • Excellent transport links via Plaistow and Stratford stations



020 3026 4420
sales@hceuk.com

Beautifully extended and fully refurbished five-bedroom Victorian home in the heart of Stratford, E15. Offering over 1,450 sq ft of stylish living space with two bathrooms, a loft conversion, and a private garden—perfect for modern family life. Offered chain free.

Council Tax band: C

Tenure: Freehold

EPC Energy Efficiency Rating: D

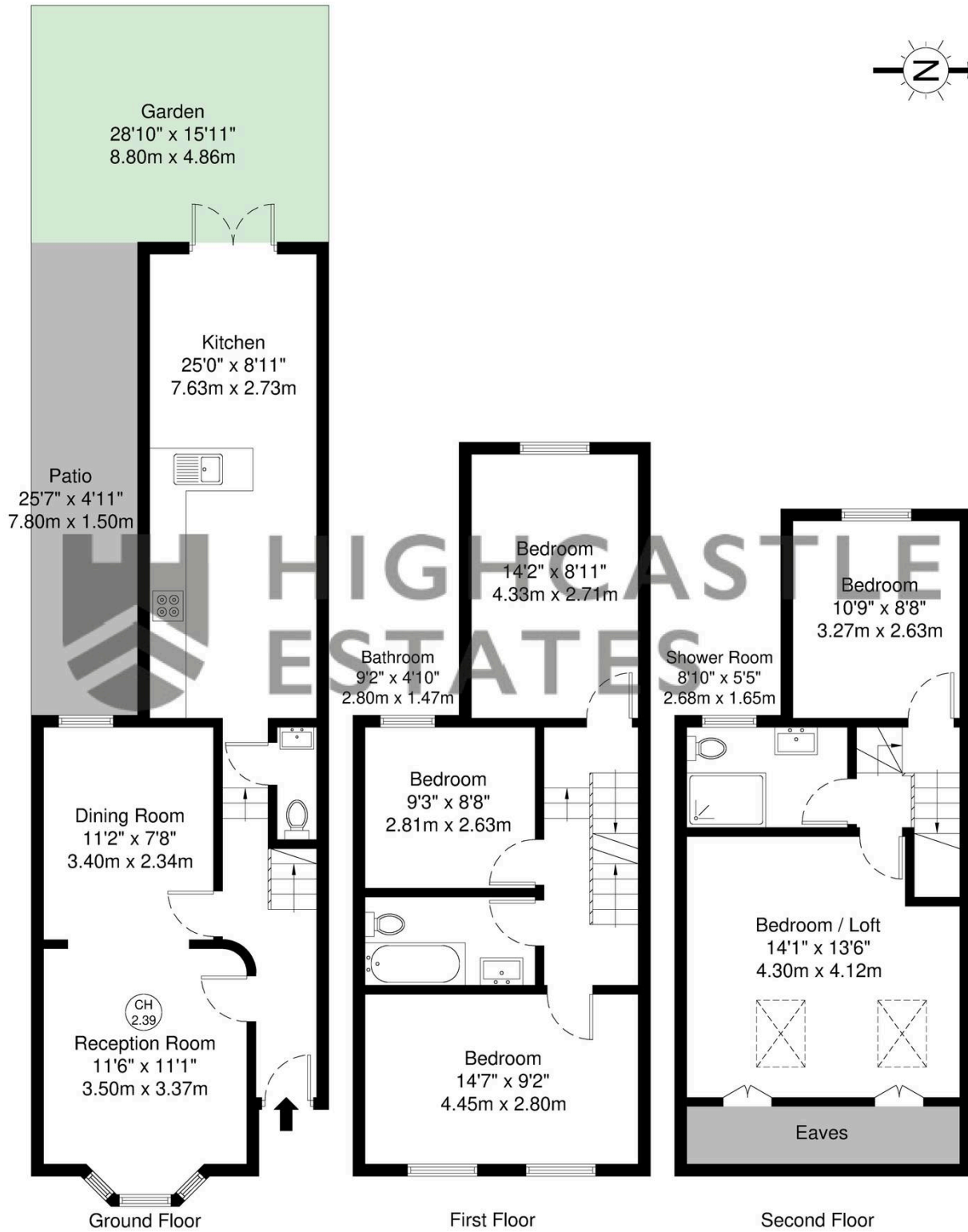
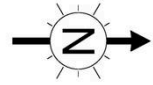
EPC Environmental Impact Rating: E



- Fully extended and refurbished Victorian terrace
- Five bedrooms, two bathrooms across three floors
- Spacious modern kitchen with direct garden access
- Bright bay-fronted reception and separate dining area
- Loft conversion providing two versatile bedrooms
- Private low-maintenance garden with patio area
- Over 1,450 sq ft of internal living space
- Offered chain free and ready to move in
- Located close to West Ham Park







GROSS INTERNAL AREA (GIA)
The footprint of the property
135.5 sq m / 1458 sq ft

TOTAL STORAGE SPACE
Storage and wardrobe total area
0.0 sq m / 0.0 sq ft

EXTERNAL FEATURES
Garden, Balcony, Terrace, Verandah etc.
54.4 sq m / 585 sq ft

RESTRICTED HEAD HEIGHT
Limited use area under 1.5m
0.0 sq m / 0.0 sq ft

Disclaimer : Floorplan measurements are approximate and are for illustrative purposes only. While we do not doubt the floorplan accuracy and completeness, you or your advisors should conduct a careful, independent investigation of the property in respect of monetary valuation.

**Maison
VUE**

You can include any text here. The text can be modified upon generating your brochure.