



DUCHESS HOUSE, W1T

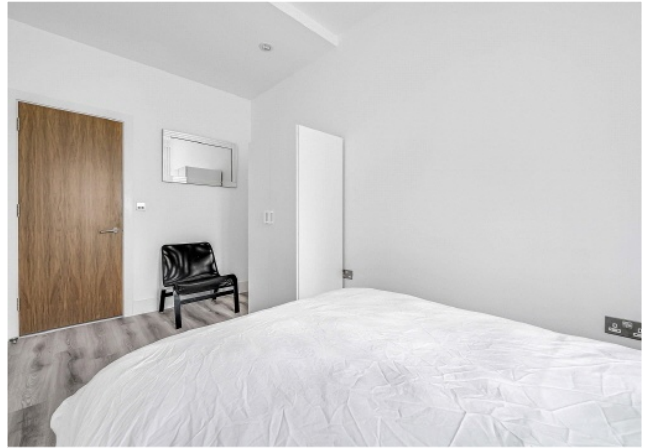
£2,750 pcm

If you're looking to be part of a world above the streets of Fitzrovia and live in style, Duchess House is the place to be. An impressive modern one double bedroom apartment situated 0.1 miles from Warren Street Underground station (Northern and Victoria Lines). |||| ||||



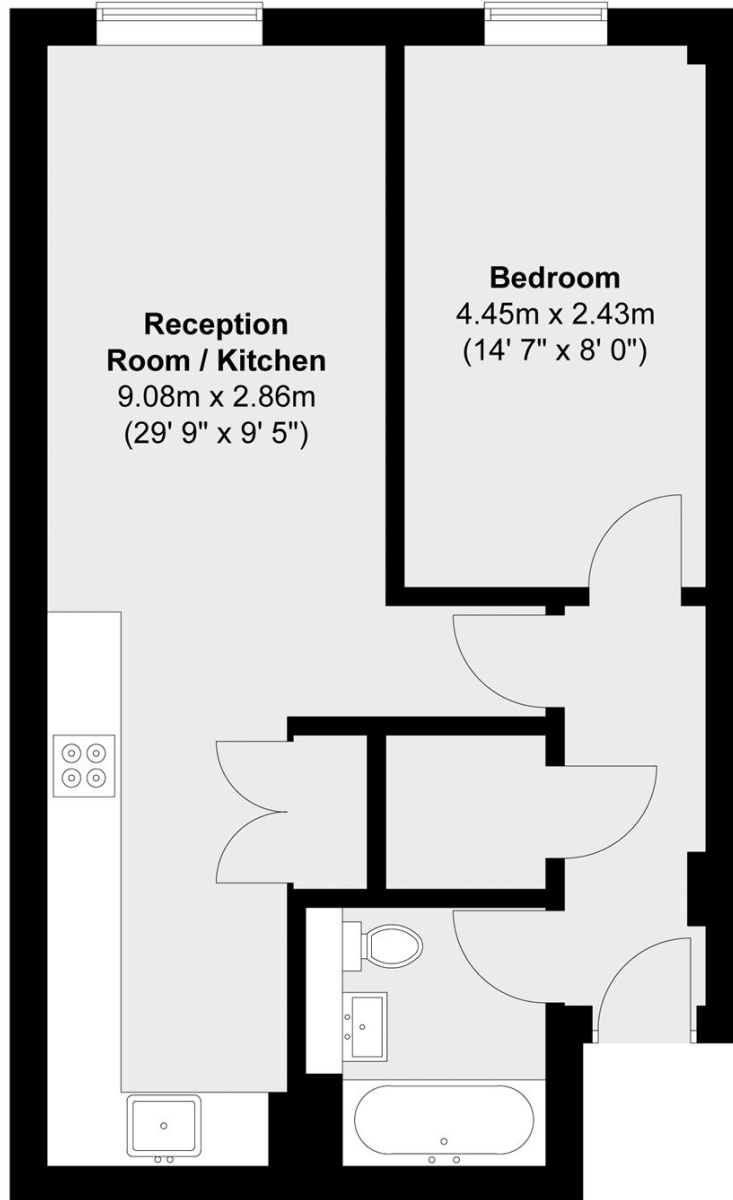
ABOUT THE HOME

If you





First Floor



Total area (approx.) : 47.2 sq. m (508 sq. ft)

LiFE RESIDENTIAL

252 Westminster Bridge
Road, London, SE1 7PD
Sales: 020 7476 0125
Lettings: 020 7620 1600

Energy Rating: C. We aim to make our particulars both accurate and reliable. However they are not guaranteed; nor do they form part of an offer or contract. If you require clarification on any points then please contact us, especially if you're traveling some distance to view. Please note that appliances and heating systems have not been tested and therefore no warranties can be given as to their good working order.