



VAUXHALL GROVE, SW8

£625,000

Two double bedrooms
Two bathrooms
Private garden
Good condition
Excellent transport
Close to shops and cafés

@marshandparsons
marshandparsons.co.uk

MARSH &
PARSONS



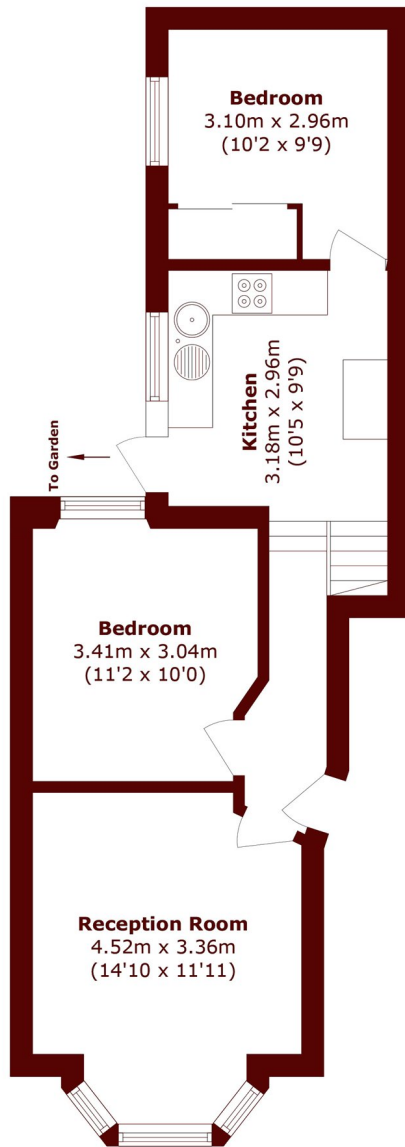
ABOUT THE PROPERTY

Set on Vauxhall Grove, this well-presented two bedroom, two bathroom garden flat offers spacious living across two levels. The ground floor features a bright living room, separate kitchen, two bedrooms, and access to a private patio ideal for relaxing or entertaining. On the lower ground floor, a generous dining area provides additional living space, complemented by two modern bathrooms.

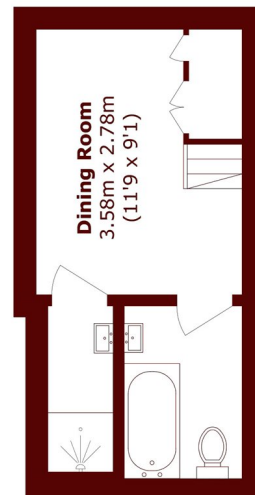
Close to Vauxhall tube, train and bus stations plus local amenities such as shops, Vauxhall Park and The River Thames.



STEP INSIDE VAUXHALL GROVE



Ground Floor



Basement

Total area (approx.): 66.0 sq. m (711.1 sq. ft)

Kennington
020 7587 1533

Energy Rating: E We aim to make our particulars both accurate and reliable. However, they are not guaranteed; nor do they form part of an offer or contract. If you require clarification on any points then please contact us, especially if you're traveling some distance to view. Please note that appliances and heating systems have not been tested and therefore no warranties can be given as to their good working order

**MARSH &
PARSONS**