

International Way, TW16

£190,000

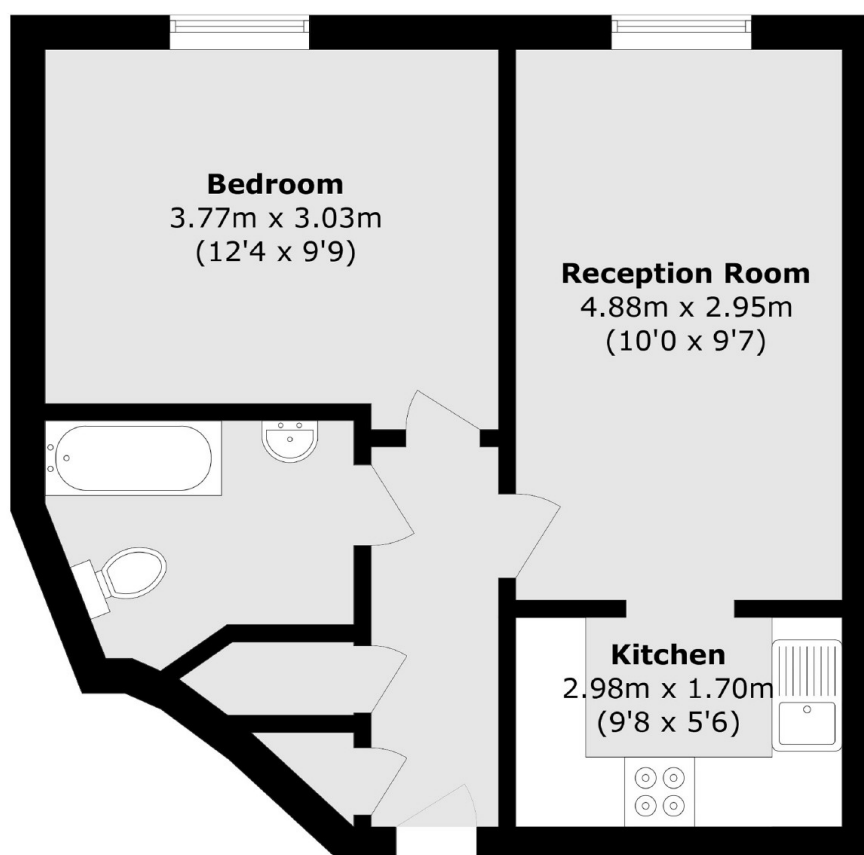
A lovely one bedroom, top floor flat, in a sought-after gated development. This property is ideal for first time buyers and early viewings are highly recommended. This has the added bonus of allocated parking.

International Way is a gated development under half a mile from Upper Halliford station, which provides a direct service into London Waterloo.

Features

- Second Floor
- One Bedroom
- Allocated Parking
- Communal Gardens
- Long Lease
- Gated Development

International Way, Sunbury-On-Thames, TW16



Total area (approx.): 42.7 sq. m (459.6 sq. ft)