



53 Seathorpe Avenue, Minster On Sea
Isle of Sheppey

Guide Price £600,000 – £630,000



53 Seathorpe Avenue

Minster On Sea, Sheerness

GUIDE PRICE £600,000 – £630,000 Situated in a highly coveted location, this remarkable property boasts a breath taking panorama of the sea. Viewing is highly recommended. Council Tax band: E

Tenure: Freehold

EPC Energy Efficiency Rating: C

EPC Environmental Impact Rating: D

- 4 bedroom detached home situated in a prime location yards from beach walks
- Detached garage with attached workshop and block paved driveway for multiple cars.
- Enclosed, landscaped garden with ponds, water features and raised sun deck
- Stunning weatherproof balcony with beautiful views from master bedroom
- Extensive eaves storage space plus walk in storage cupboards
- L shaped lounge with double aspect windows and wood burner
- Spacious kitchen/diner with range
- Downstairs shower room and first floor bathroom
- Electric gate to driveway, CCTV and outside lighting
- Sunny conservatory with doors to the garden





Seathorpe Avenue, Minster On Sea, Sheerness, ME12



Approximate Area = 1921 sq ft / 178.4 sq m

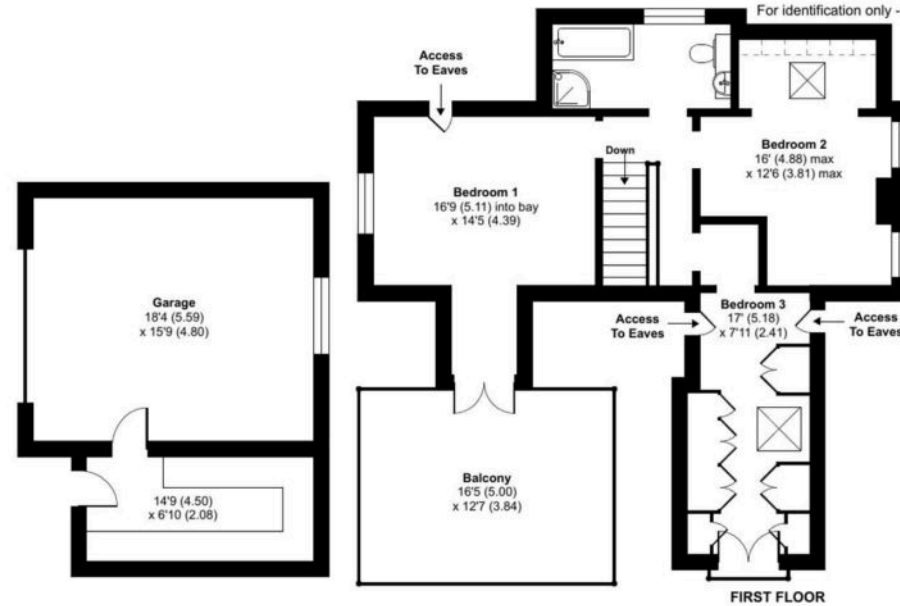
Limited Use Area(s) = 9 sq ft / 0.8 sq m

Garage = 290 sq ft / 26.9 sq m

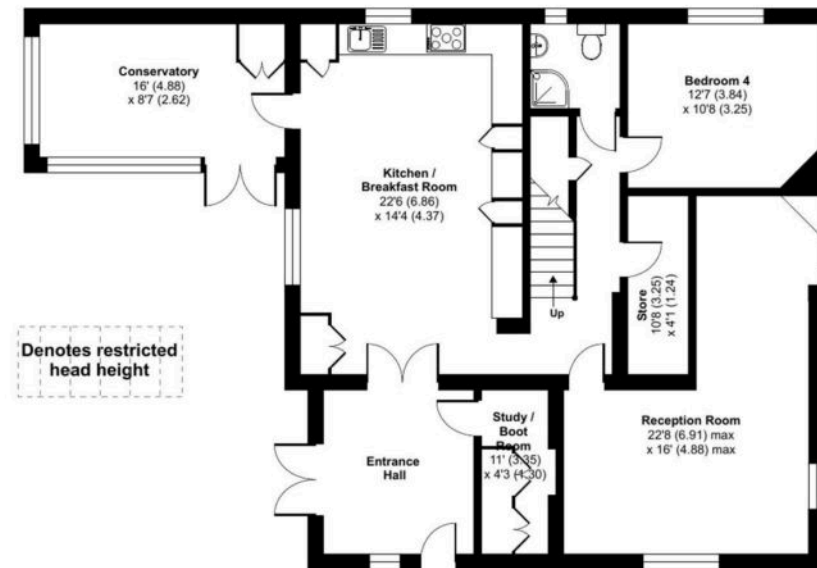
Outbuilding = 101 sq ft / 9.3 sq m

Total = 2321 sq ft / 215.6 sq m

For identification only - Not to scale



FIRST FLOOR



GROUND FLOOR

Denotes restricted head height



Floor plan produced in accordance with RICS Property Measurement 2nd Edition, Incorporating International Property Measurement Standards (IPMS2 Residential). © nlichecom 2025. Produced for Homely Bespoke Estate Agents. REF: 1375805







Homely Bespoke Estate Agents

07817 727321

lynne@homelyproperties.co.uk

www.homelyproperties.co.uk