

OVER 60?

Secure this property
for up to **59% less!**



Guide Price

£800,000

Freehold

5x  3x  2x 

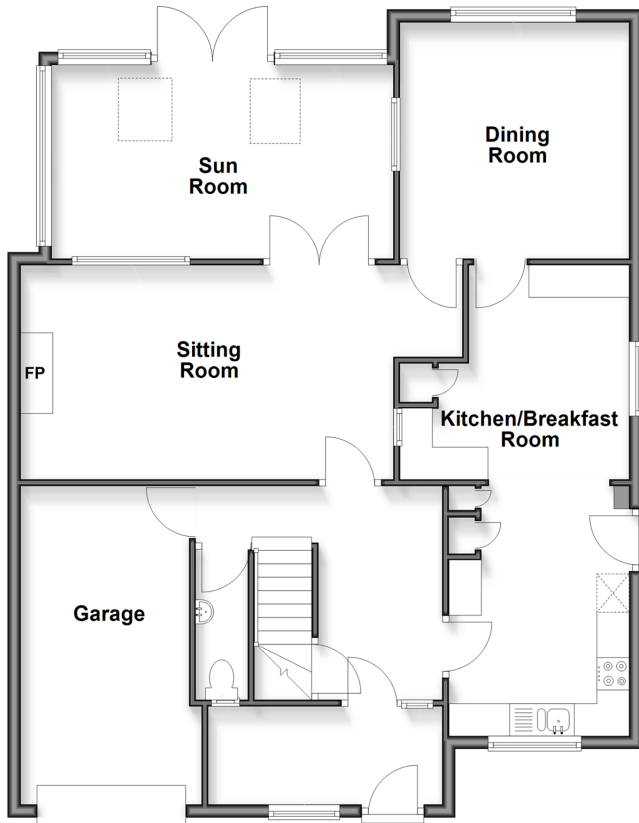
Butchers Lane, Mereworth, Maidstone,
Kent, ME18

Wards

Helping you move forwards

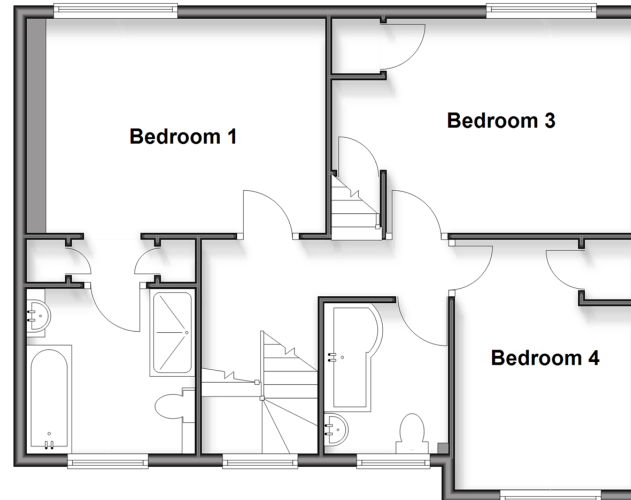
Ground Floor

Approx. 105.1 sq. metres (1131.7 sq. feet)



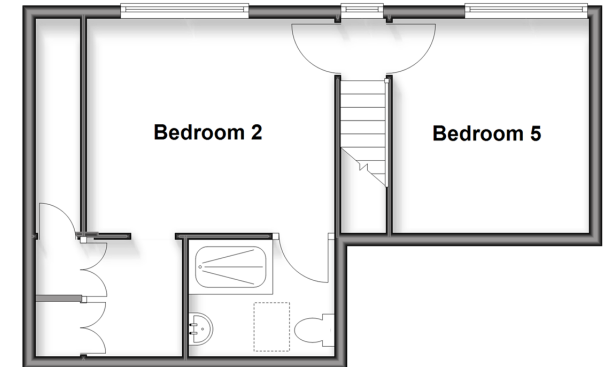
First Floor

Approx. 65.3 sq. metres (702.6 sq. feet)



Second Floor

Approx. 37.3 sq. metres (401.4 sq. feet)



Accommodation

GROUND FLOOR

Entrance Porch
Entrance Hall
Cloakroom
Kitchen/Breakfast Room: 24'2 x 9'3 (7.37m x 2.82m)
Sitting Room : 22'6 x 11'1 (6.86m x 3.38m)
Sun Room: 17'4 x 9'11 (5.29m x 3.02m)
Dining Room: 12'0 x 11'1 (3.66m x 3.38m)

FIRST FLOOR

Landing
Bedroom 1: 15'5 x 10'11 (4.70m x 3.33m)
En-Suite Shower Room
Bedroom 3: 15'1 x 10'11 (4.60m x 3.33m)
Bedroom 4: 12'10 x 9'3 (3.91m x 2.82m)
Bathroom

SECOND FLOOR

Landing
Bedroom 2: 12'9 x 11'1 (3.89m x 3.38m)
En-Suite Shower Room
Dressing Room
Bedroom 5: 11'0 x 10'0 (3.36m x 3.05m)

OUTSIDE

Garage & Car Port
Rear Garden



Main features

- No forward chain
- Semi rural location with countryside views
- Garage, car port & plenty of off road parking
- Substantial detached house
- Large sunny rear garden

Nearest Schools

Primary Schools: Mereworth Community Primary 0.7 miles, Valley Invicta Primary 1.1 miles, Kings Hill School 2.0 miles. Secondary Schools: Grange Park School 4.8 miles, The Malling School 5.0 miles, Oakwood Park Grammar School 5.2 miles

Transport Information

Train Stations: Wateringbury 2.4 miles, West Malling 3.3 miles, Borough Green & Wrotham 3.7 miles. Good bus service to Maidstone & Tonbridge.

Address

Butchers Lane, Mereworth, Maidstone, Kent, ME18

Directions

For directions to this property please contact us.



Wards
Helping you move forwards

Call Kings Hill Branch 01732 222211 ■ wardsof Kent.co.uk



■ Through a Homewise Home For Life Plan people aged 60+ can secure this property for up to 59% less, by purchasing a Lifetime Lease



12405447/20260429/BC/KH