



Dunbar Road, London, N22
Chain Free £650,000 Freehold

Anthony Webb
ESTATE AGENTS

Dunbar Road, London, N22

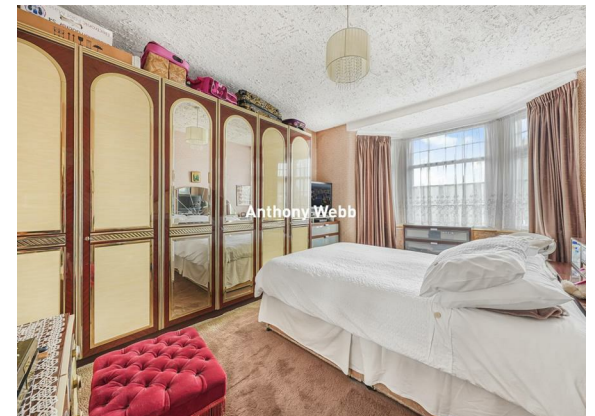
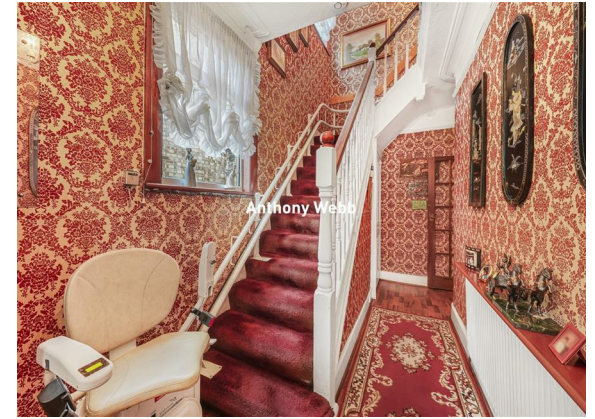
A CHAIN FREE three bedroom, end of terrace house, requiring modernisation. The property offers 1145 sq ft of well presented living space and offers great potential to extend and improve.

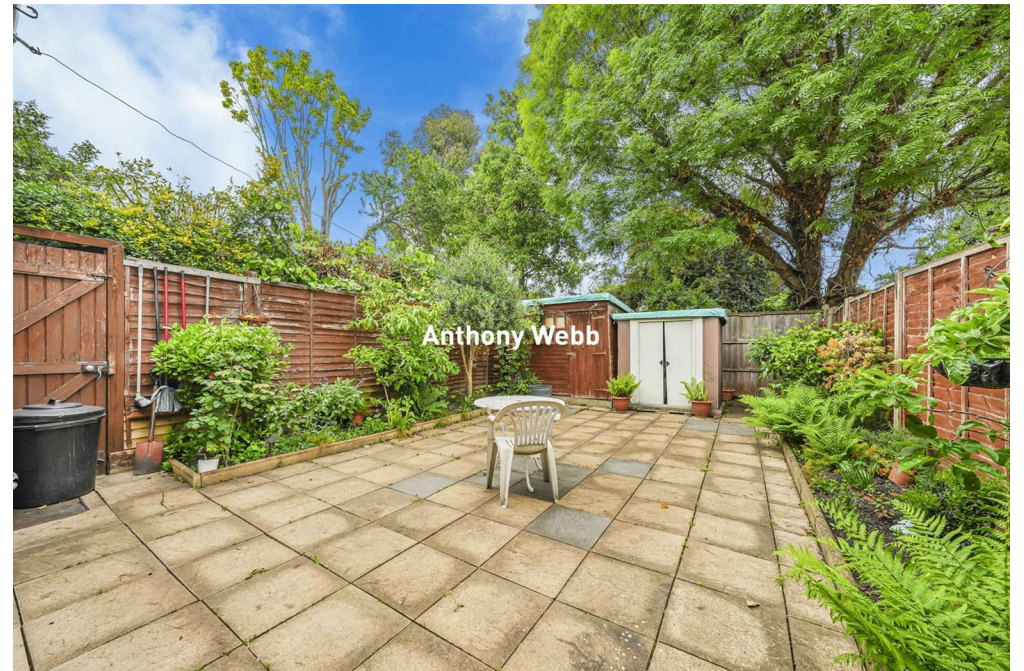
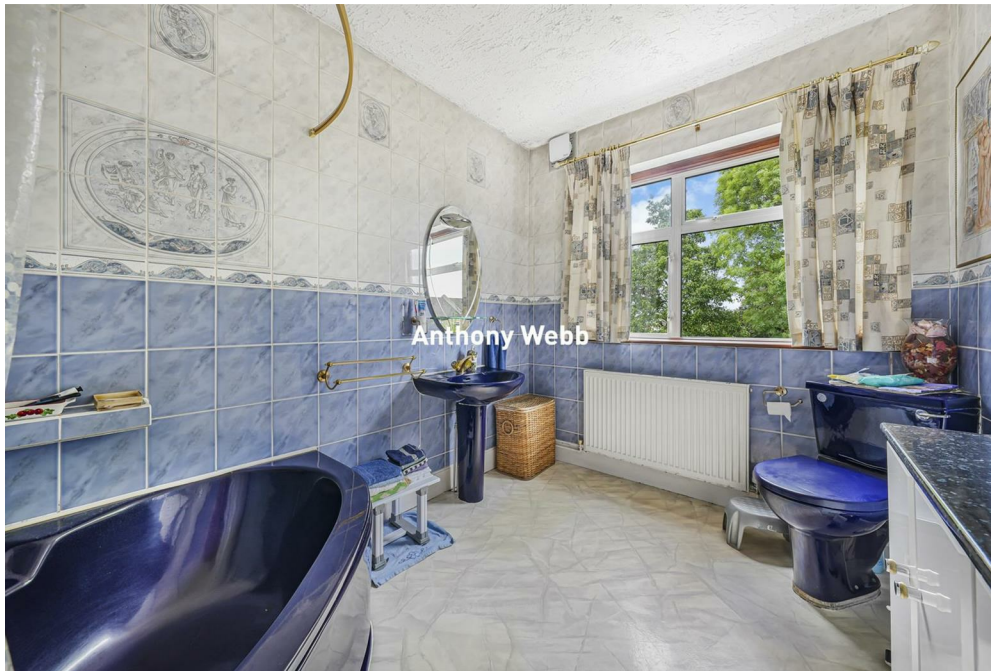
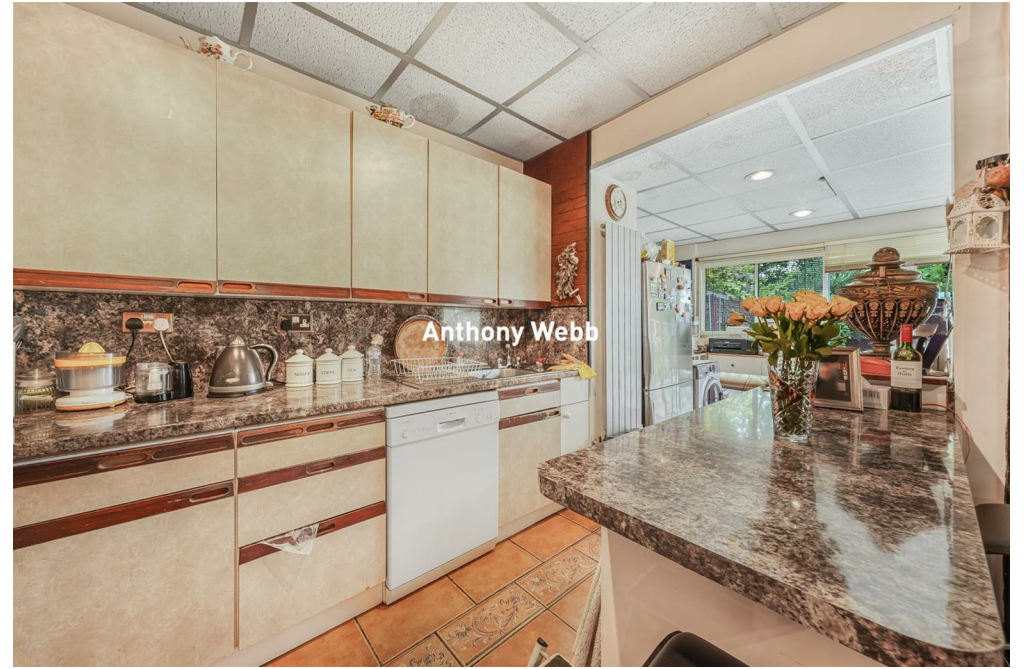
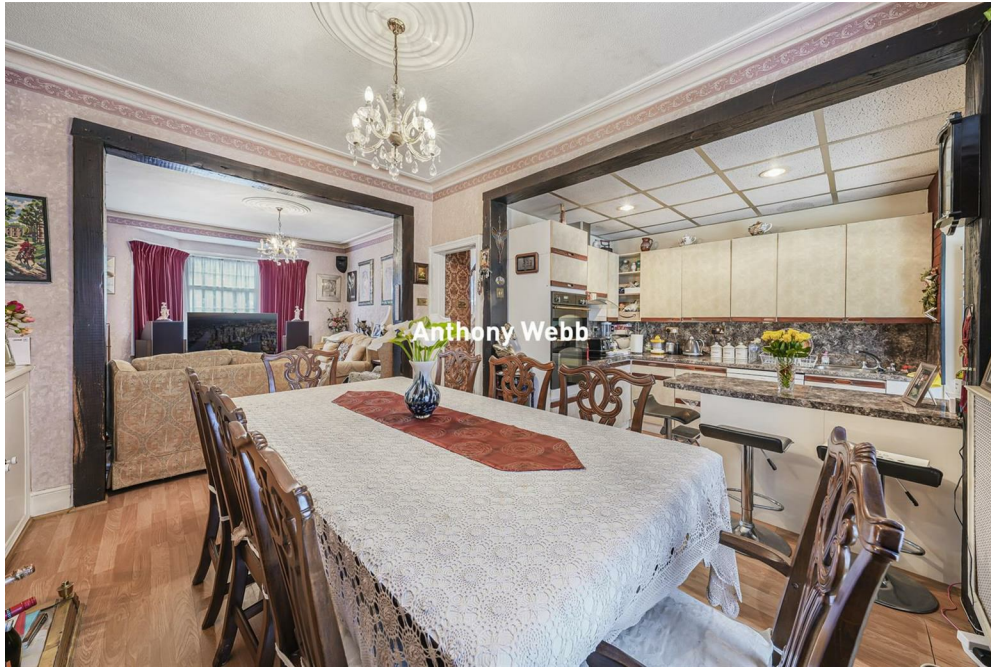
Ideally located in the heart of Wood Green, the property benefits from a range of local cafés and restaurants, with The Mall Wood Green offering a wide variety of shops and dining options. Wood Green Underground station also provides easy access to the Piccadilly Line (Zone 3), making it ideal for commuters requiring convenient access to London and beyond.

Hallway • Through lounge with bay window and access to garden • Kitchen opening to a conservatory with doors to garden • First floor landing with access to insulated loft space • Good size family bathroom • Two double bedrooms with bay windows • Single bedroom • Double glazing • Gas central heating • Paved rear garden with flower and shrub borders.

Haringey Council tax band E

- Three bedrooms
- End of terrace house
- Through lounge
- Kitchen + conservatory
- Front and rear gardens
- Double glazing/Gas central heating
- Close to shops/station





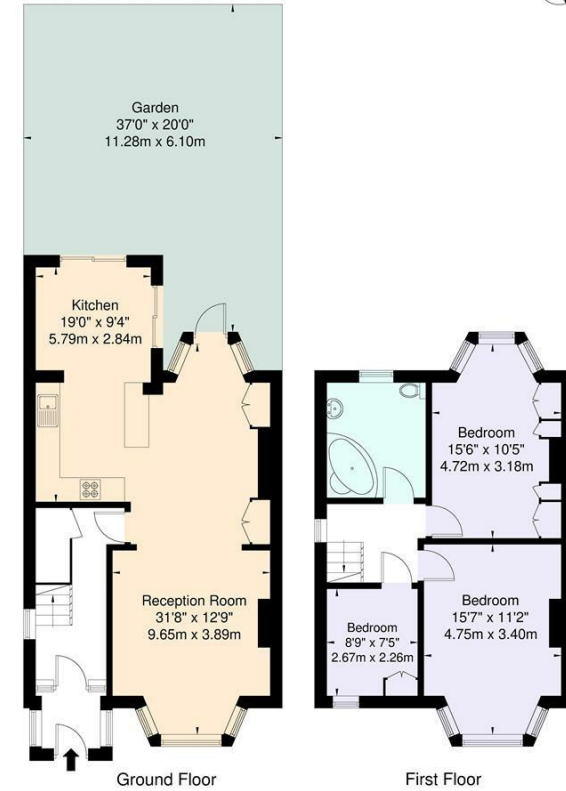
Dunbar Road London N22 5BJ

Tenure: Freehold
Gross Internal Area: 1145.00 sq ft



Energy Efficiency Rating		Current	Potential
Very energy efficient - lower running costs			
(92 plus) A			
(81-91) B			
(69-80) C			
(55-68) D			
(39-54) E			
(21-38) F			
(1-20) G			
Not energy efficient - higher running costs			
England & Wales		EU Directive 2002/91/EC	
Environmental Impact (CO ₂) Rating		Current	Potential
Very environmentally friendly - lower CO ₂ emissions			
(82 plus) A			
(61-81) B			
(39-80) C			
(15-68) D			
(39-54) E			
(21-38) F			
(1-20) G			
Not environmentally friendly - higher CO ₂ emissions			
England & Wales		EU Directive 2002/91/EC	

Dunbar Road N22 5BJ
Approximate Gross Internal Area = 106.4 sq m / 1145 sq ft



For Illustration Purposes Only - Not To Scale
This floor plan should be used as a general outline for guidance only and does not constitute in whole or in part an offer or contract. Any intending purchaser or lessee should satisfy themselves by inspection, enquiries and full survey as to the correctness of each statement. Any areas, measurements or distances quoted are approximate and should not be used to value a property or be the basis of any sale or let.

Property particulars as supplied by Anthony Webb Estate Agents are set out as a general outline in accordance with the Property Misdescriptions Act (1991) only for the guidance of intending purchasers of lessees, and do not constitute any part of an offer or contract. Details are given without any responsibility, and any intending purchasers, lessees or third parties should not rely on them as inspection or otherwise as to the correctness of each of them. We have not carried out a structural survey and the services, appliances and specific fittings have not been tested. All photographs, measurements, floor plans and distances referred to are given as a guide only and should not be relied upon for the purchase of carpets or any other fixtures statements or representations of fact, but must satisfy themselves by or of fittings, gardens, roof terraces, balconies and communal gardens as well as tenure and lease details cannot have their accuracy guaranteed for intending purchasers. Lease details, service ground rent (where applicable) are given as a guide only and should be checked and confirmed by your solicitor prior to exchange of contracts. no person in the employment of Anthony Webb has any authority to make any representation or warranty whatever in relation to this property.

348 Green Lanes, Palmers Green, London N13 5TJ
020 8882 7888
palmersgreen@anthonywebb.co.uk
anthonywebb.co.uk

Anthony Webb
ESTATE AGENTS