

HOME  TRUTHS

Range Drive, Standish

WN6 0GU





Occupying an elevated corner plot at the head of a quiet cul-de-sac, this fabulous three bedroom detached property enjoys open views to the front and offers approximately 1,000 square feet of beautifully presented accommodation. Ideally located within easy reach of excellent schools, local amenities and primary transport routes, this is a first-class family home. Steps lead through the front garden to the main entrance, where you are welcomed into the entrance hallway. A convenient cloakroom comprises a wc and wash hand basin. To the front, the elegant bay-fronted living room is beautifully presented, featuring stylish panelled walls and providing a comfortable space in which to relax. To the rear, the dining kitchen forms the heart of the home and comprises a range of wall and base units topped with quartz work surfaces incorporating an etched drainer. Integrated appliances include a five-burner gas hob, electric oven and grill, refrigerator, freezer, dishwasher and washing machine, while there is ample space for both dining and family living. Patio doors open onto an Indian stone sun terrace in the private south-facing garden. With a low-maintenance artificial lawn and an elevated decked seating area, this delightful outdoor space is perfectly designed for relaxing, entertaining and making the most of the sunshine. There is gated access to the driveway and garage which benefits from power and light. Back inside, stairs rise to the first-floor landing with airing cupboard and ladder access to the boarded loft, which benefits from lighting and provides excellent additional storage. The principal bedroom features fitted wardrobes and a stylish en suite comprising a mixer shower in cubicle, wash hand basin, wc and ladder heated towel rail. Bedroom two is a comfortable double, whilst bedroom three is a generous single, ideal as a child's bedroom, nursery or home office.



Completing the accommodation, the family bathroom comprises a bath with screen and electric shower over, wash hand basin, wc and ladder heated towel rail. Beautifully presented throughout and occupying an enviable position with open views, this wonderful family home has so much to offer.

- Gorgeous detached house
- Three bedrooms
- Cul de sac location
- Ample parking & garage
- Virtual tour
- Close to amenities



## HOME TRUTHS

Eccleston Branch  
265 The Green, Eccleston, PR7 5TF  
01257 451673

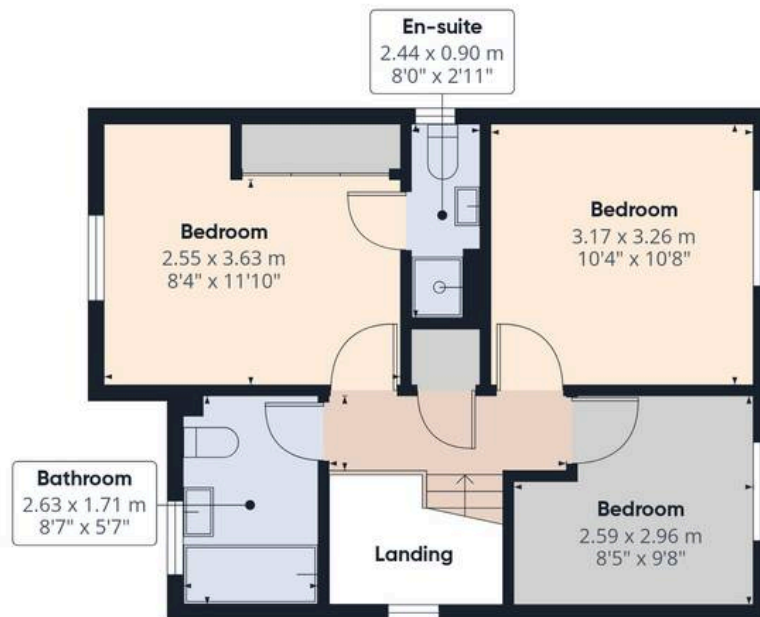
Coppull Branch  
244 Spendmore Lane, Coppull, PR7 5DE  
01257 794588

[www.hometruthslancs.co.uk](http://www.hometruthslancs.co.uk)  
[office@hometruthslancs.co.uk](mailto:office@hometruthslancs.co.uk)





Floor 1 Building 1



Floor 2 Building 1



Floor 1 Building 2

Approximate total area<sup>(1)</sup>

98.4 m<sup>2</sup>

1059 ft<sup>2</sup>

(1) Excluding balconies and terraces

Calculations reference the RICS IPMS 3C standard. Measurements are approximate and not to scale. This floor plan is intended for illustration only.

GIRAFFE360