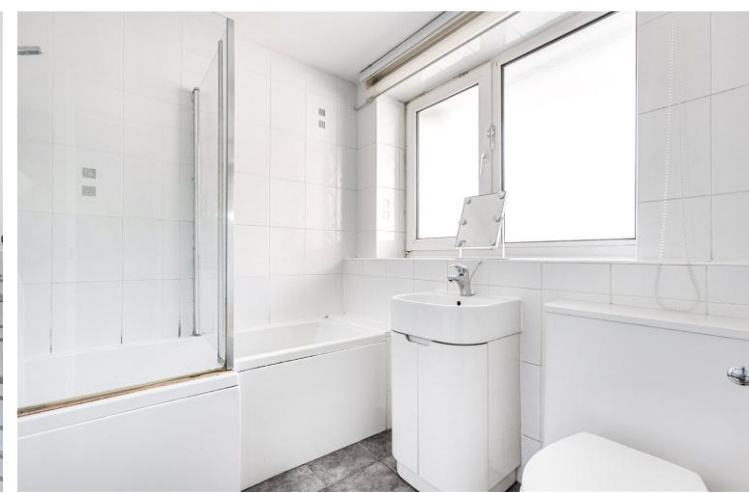




Blake House
York Road, SW11

CHESTERTONS





Short Let
 Bills Included
 Located in a secure purpose-built development a short walk to both Clapham Junction and Wandsworth Town Railway Stations.

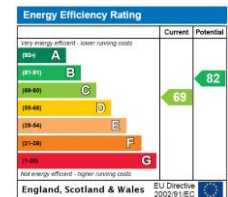
The property comprises of 2 full double bedrooms, a separate recently refurbished kitchen and a good size reception room ideal for entertaining. Offered on a furnished basis with high-speed internet available. Moments from Clapham Junction Station. Offered on a furnished basis.

Ideally located on York Road and next to Battersea High Street, within a short walk of the green open spaces at Battersea Park. Situated moments from far reaching transport links from Clapham Junction Mainline Station, the River Thames and cafés, restaurants and bars at Battersea Square.

- Secure purpose built block
- Two full double bedrooms
- Short Let
- Separate living room
- Furnished
- Bills Included

£3,500 pcm

Additional tenant charges apply (fees apply to non-AST tenancies only)
 Tenancy Agreement Fee: £300
 References per Tenant/Guarantor: £60
 Inventory check (approx. £100 – £250 inc. VAT)
chestertons.co.uk/property-to-rent/applicable-fees



Minimum Term: 1 months
Deposit Required: £1,615.38
Local Authority: London Borough of Wandsworth
Council Tax Band: C
EPC Rating: C
Furnished

Chestertons Battersea Park & Nine Elms Lettings

62-64 Battersea Bridge Road
 London
 SW11 3AG
batterseapark@chestertons.co.uk
 02030408269
chestertons.co.uk

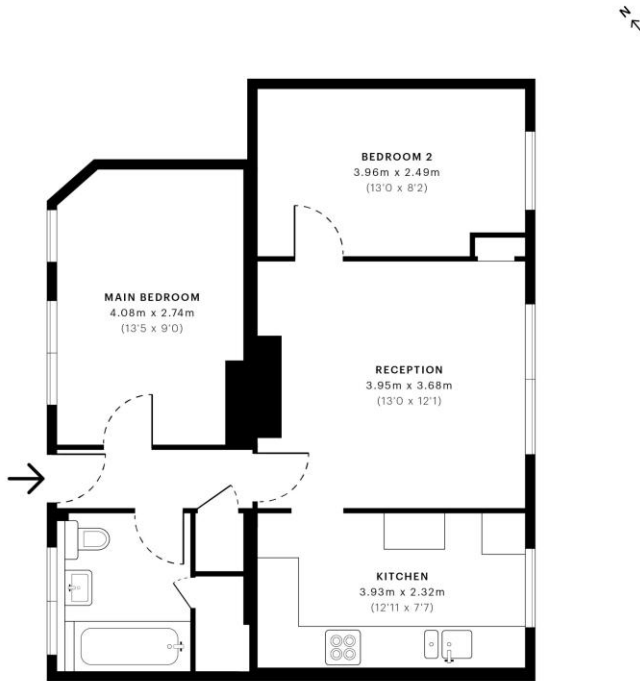


Blake House, SW11

CAPTURE DATE: 07/07/2022 | LASER SCAN POINTS: 23,987,013

GROSS INTERNAL AREA

56.14 sqm / 604.29 sqft



— Second Floor

GROSS INTERNAL AREA (GIA)
The footprint of the property
56.14 sqm / 604.29 sqft

NET INTERNAL AREA (NIA)
Excludes walls and external features
Includes washrooms, restricted head height
52.57 sqm / 565.86 sqft

EXTERNAL STRUCTURAL FEATURES
Balconies, terraces, verandas etc.
0.00 sqm / 0.00 sqft

RESTRICTED HEAD HEIGHT
Limited use area under 1.9m
0.00 sqm / 0.00 sqft



Spec Verified floor plans are produced in accordance with Royal Institution of Chartered Surveyors' Property Measurement Standards. Plots and gardens are illustrative only and excluded from all area calculations. Due to rounding, numbers may not add up precisely. All measurements shown for the individual room lengths and widths are the maximum points of measurements captured in the scan.

IPMS 2B RESIDENTIAL: 57.89 sqm / 623.12 sqft
IPMS 3C RESIDENTIAL: 54.33 sqm / 584.80 sqft
SPEC ID: 62c444d8caf5ad0ddb0317ee

Chesterton UK Services Limited trading as Chestertons for themselves and for the vendor of this property whose agents they are, give notice that (i) these particulars do not constitute any part of an offer or contract, (ii) all statements contained within these particulars are made without responsibility on the part of Chestertons or the vendor, (iii) whilst made in good faith, none of the statements contained within these particulars are to be relied upon as a statement or representation of fact, (iv) any intending purchasers must satisfy themselves by inspection or otherwise as to the correctness of each of the statements contained within these particulars, (v) the vendor does not make or give either Chestertons or any person in their employment any authority to make or give representation or warranty whatsoever in relation to this property. Wide angle lenses may be used. ©Copyright Chestertons | Chesterton Global Ltd | Registered Office 5th Floor, The Lantern, 75 Hampstead Road, London, NW1 2PL Registered Company Number 05334580.



This paper is 100% recyclable