



Palm Grove Court, Doncaster, Doncaster



Guide price £172,000

- Open Plan Living/Diner
- Master With Ensuite
- Two Double Bedrooms
- Modern Throughout
- Parking
- Sought After Location
- Leasehold
- EPC rating N/A



For Sale - a new stunning two-bedroom park home in Thorne, Doncaster, exclusively for over 55s.

This modern furnished park home offers a welcoming open-plan living/dining room, creating a comfortable space for everyday living and entertaining. The fitted kitchen sits just off the living area, providing a practical layout for cooking and dining.

There are two double bedrooms. The main bedroom benefits from an en-suite shower room and dressing area, offering useful storage and privacy. The second double bedroom is served by a separate family bathroom, ideal for visiting family or guests.

Outside, the property includes its own garden area, giving pleasant outdoor space for seating and planting, along with parking for added convenience.

Situated in Thorne, the home is well placed for local amenities, including shops, supermarkets, cafes and medical facilities in the town centre. Thorne offers several green



spaces and nearby canal-side walks, providing opportunities for fresh air and gentle exercise.

Public transport links are a key feature of the location. Thorne North and Thorne South railway stations provide services towards Doncaster (around 15-20 minutes), Sheffield and Hull, making trips for shopping, leisure or visiting family straightforward. Local bus services also connect the area with surrounding neighbourhoods and Doncaster town centre.

Living Room 6.34m x 2.71m (20'10" x 8'11")

Kitchen/Diner 6.7m x 3.45m (22'0" x 11'4")

Bathroom 2m x 2.1m (6'7" x 6'11")

Master Bedroom 3.11m x 2.5m (10'2" x 8'2")

Dressing Area 1.04m x 1.85m (3'5" x 6'1")

En-Suite 1.85m x 2m (6'1" x 6'7")

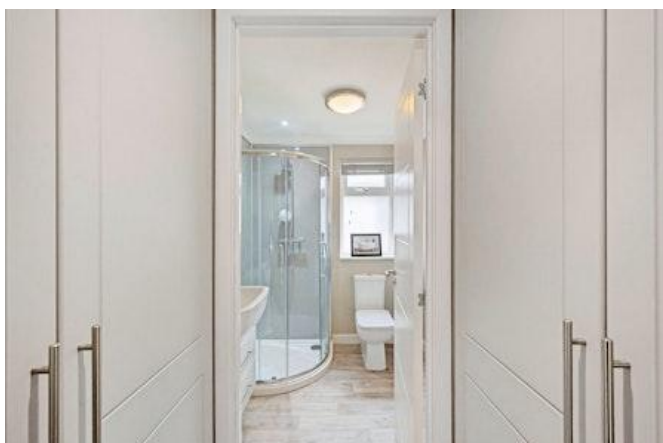
Bedroom Two 3.1m x 2.45m (10'2" x 8'0")

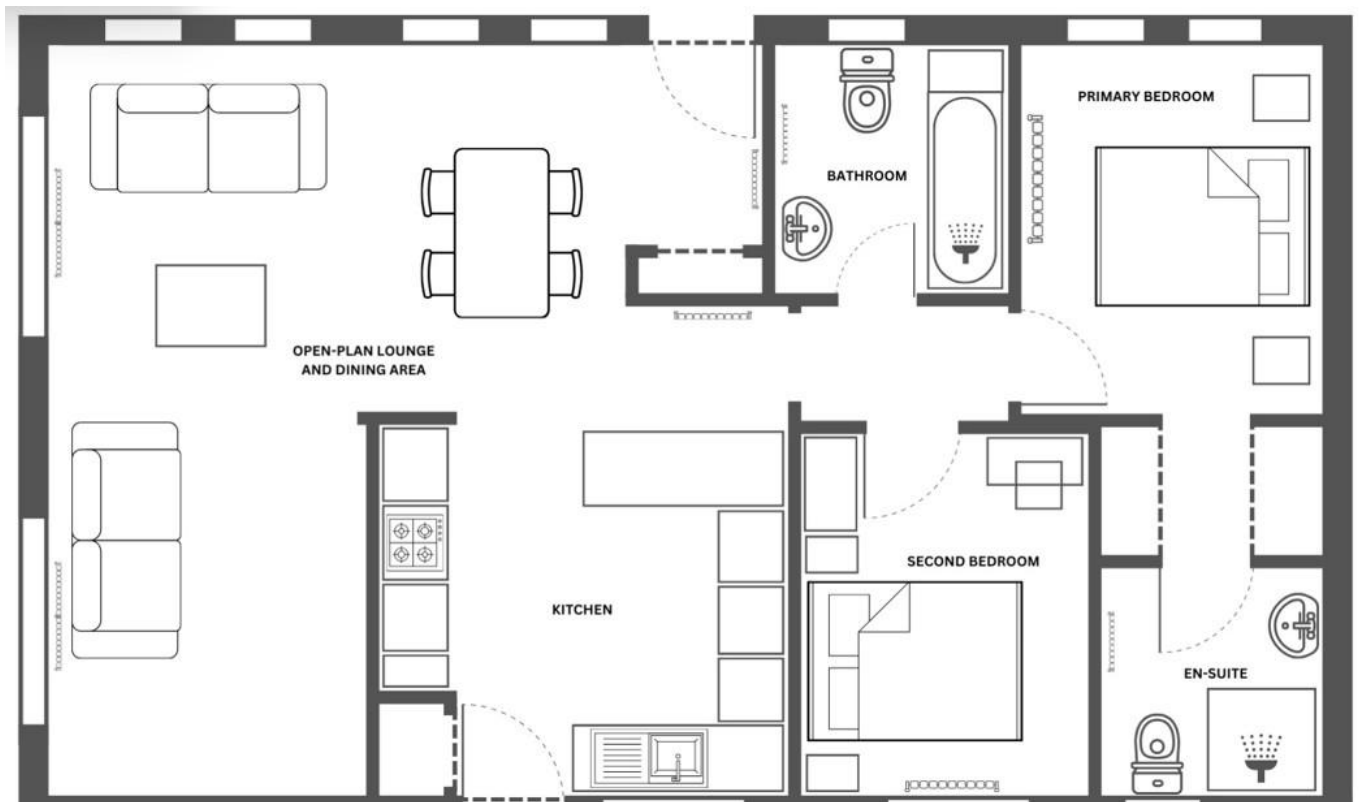
Disclaimer

Disclaimer Palm Grove Court - These details are intended to give a fair description only and their accuracy cannot be guaranteed nor are any floor plans (if included) exactly to scale. These details do not constitute part of any offer or contract and are not to be relied upon as statements of representation or fact. Intended purchasers are advised to recheck all measurements before committing to any expense and to verify the legal title of the property from their legal representative. Any contents shown in the images contained within these particulars will not be included in the sale unless otherwise stated or following individual negotiations with the vendor. Northwood have not tested any apparatus, equipment, fixtures or services so cannot confirm that they are in working order and the property is sold on this basis.

AML

Should you wish to make an offer on this property we will complete mandatory Anti Money Laundering (AML) checks on behalf of HMRC. We outsource this process to our partners, Coadjute. Coadjute charge a fee for this service.







Northwood Thorne

01405 814999

thorne@northwooduk.com