



Putney Heath Lane, SW15

£1,175,000

Dexters



Putney Heath Lane, SW15

A handsome townhouse, offered chain-free and fully renovated by the current owners. The ground floor features a spacious open-plan reception room with a modern kitchen, fitted with integrated appliances including a fridge/freezer, oven, induction hob with built-in extractor, dishwasher, and wine fridge. There is also a utility cupboard, downstairs cloakroom, and doors opening onto the garden. The first floor offers an additional reception room with a bright southerly aspect, which could be used as a bedroom if required, along with the principal bedroom and a well-appointed family bathroom.

On the top floor are two further double bedrooms with fitted wardrobes, plus a single bedroom/study with built-in storage. A drop-down ladder from the landing provides access to the loft, offering potential for extension (STPP). Externally, there is a front garden with secure storage, and a private south-facing rear garden with paved areas and shrub borders, accessed from the reception room. The former garage has been converted into a home office/gym with power, lighting, heating, and a roof light.

Ideally located on a quiet road just off Putney Hill, close to Putney Heath, Wimbledon Common, and the amenities of Putney High Street. Putney mainline station and East Putney Underground (District Line) are both within easy reach, along with regular bus routes into Central London.

Features

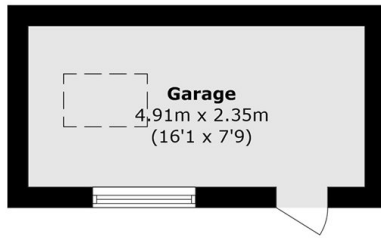
- Four Bedrooms
- Two Bathrooms
- Chain Free
- Home Office
- Recently Renovated
- Potential to extend (STPP)



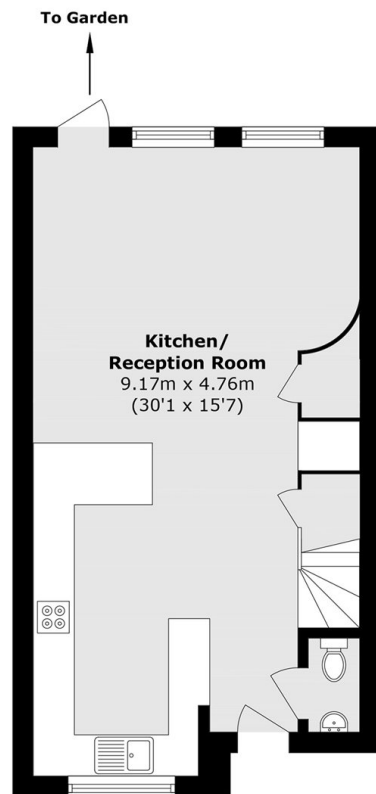




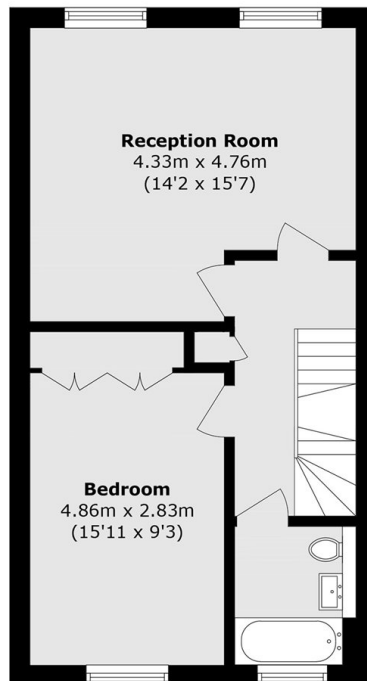
Putney Heath Lane, London, SW15



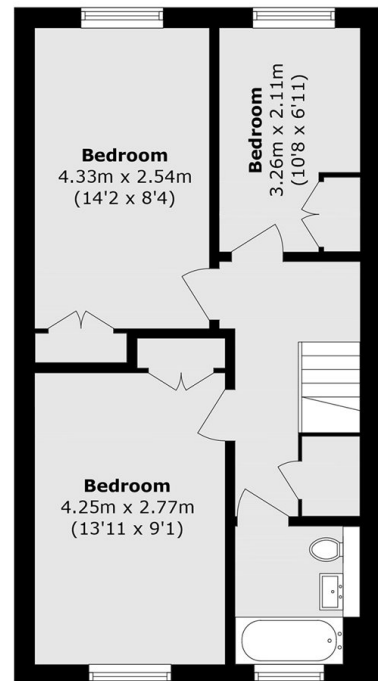
Ground Floor



Ground Floor



First Floor



Second Floor

Total area (approx.): 130.5 sq. m (1404.7 sq. ft)
(Excluding Garage)

Garage area (approx.): 11.5 sq. m (123.7 sq. ft)