



11 Whitehill Park, Gateshead, NE10 9BN

Offers Over £169,950

Nestled in the sought-after area of Whitehill Park, this immaculately presented terraced house offers a delightful blend of comfort and style. Upon entering, you are welcomed by a spacious entrance hallway that leads into a bright and airy lounge, seamlessly connecting to a well-appointed dining kitchen. This kitchen is a chef's dream, featuring an integrated double oven, dishwasher, and fridge/freezer, making it perfect for both everyday meals and entertaining guests. The ground floor also boasts a convenient w/c, enhancing the practicality of the living space. Ascending to the first floor, you will find the main bedroom, which is generously sized and benefits from built-in storage as well as a charming Juliet balcony that provides a lovely outlook, perfect for enjoying your morning coffee. A further double bedroom offers ample space for family or guests, while the family bathroom is well-equipped to meet your needs. Outside, the property features a south facing rear gardens, providing a serene outdoor space for relaxation or play. Additionally, a driveway at the front of the house ensures off-street parking, a valuable asset in this desirable location. Viewings are highly recommended to fully appreciate the charm and quality of this lovely home. Whether you are a first-time buyer or looking to downsize, this property is sure to impress.

ENTRANCE HALLWAY

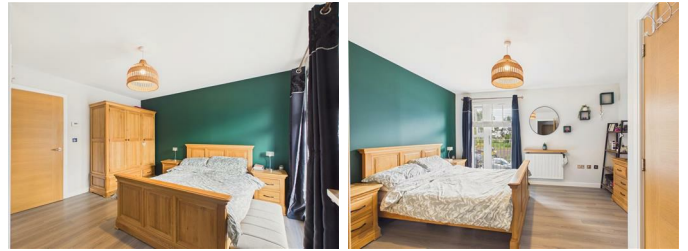


FIRST FLOOR LANDING



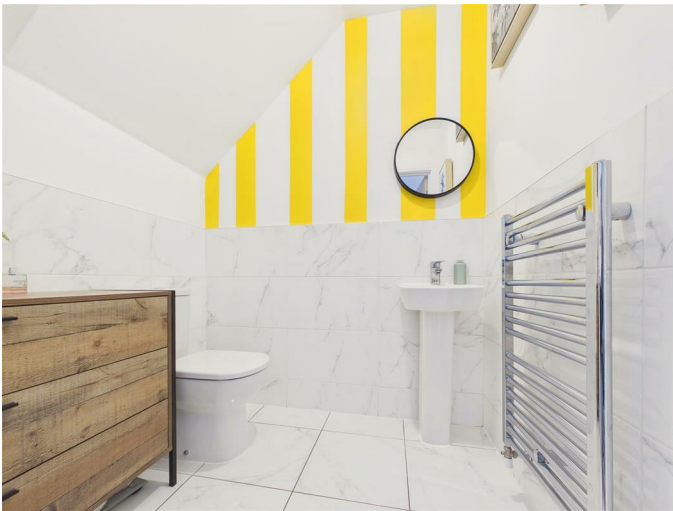
BEDROOM ONE

13'2" x 12'7" (4.03m x 3.85m)



GROUND FLOOR W/C

5'10" x 5'1" (1.80m x 1.55m)



BEDROOM TWO

13'2" x 8'2" (4.03m x 2.49m)



LOUNGE

13'5" x 9'10" (4.11m x 3.00m)



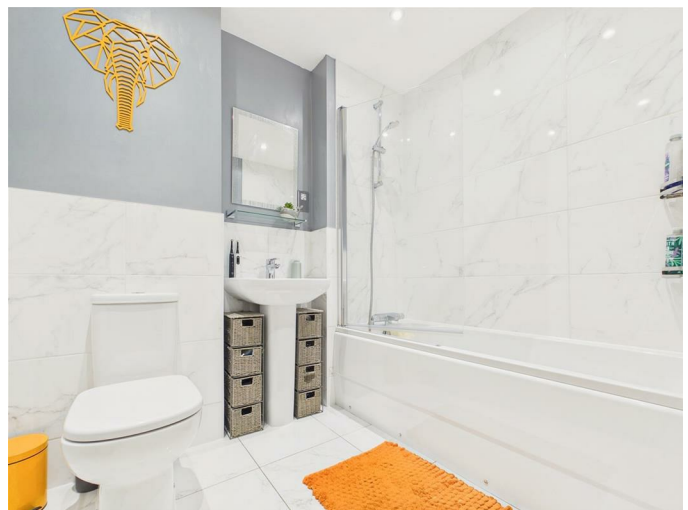
DINING KITCHEN

13'2" x 12'3" (4.03m x 3.74m)



BATHROOM

7'4" x 6'9" (2.26m x 2.06m)



EXTERNAL



Property disclaimer

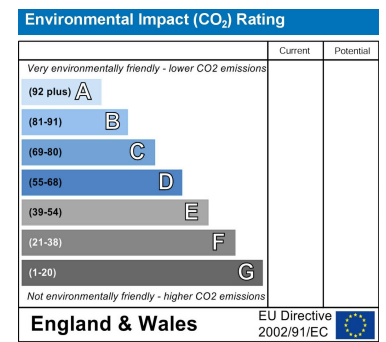
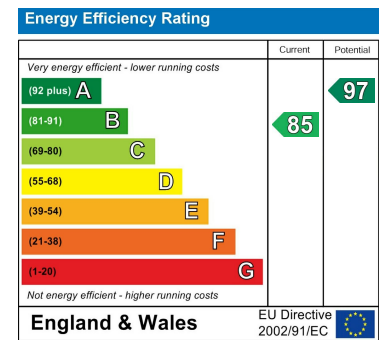
IMPORTANT NOTE TO PURCHASERS: We endeavour to make our sales particulars accurate and reliable, however, they do not constitute or form part of an offer or any contract and none is to be relied upon as statements of representation or fact. The services, systems and appliances listed in this specification have not been tested by us and no guarantee as to their operating ability or efficiency is given. All measurements have been taken as a guide to prospective buyers only, and are not precise. Floor plans where included are not to scale and accuracy is not guaranteed. If you require clarification or further information on any points, please contact us, especially if you are travelling some distance to view. Fixtures and fittings other than those mentioned are to be agreed with the seller. We cannot also confirm at this stage of marketing the tenure of this house.

Floor Plan

Area Map



Energy Efficiency Graph



These particulars, whilst believed to be accurate are set out as a general outline only for guidance and do not constitute any part of an offer or contract, purchaser should not rely on them as statements of representation of fact, but must satisfy themselves by inspection or otherwise as to their accuracy. No person in this firm's employment has the authority to make or give an representation or warranty in respect of the property.