

FLETCHERS

ESTATE AGENTS



Edith Villas, W14

£461 Per week (£2,000 pcm)

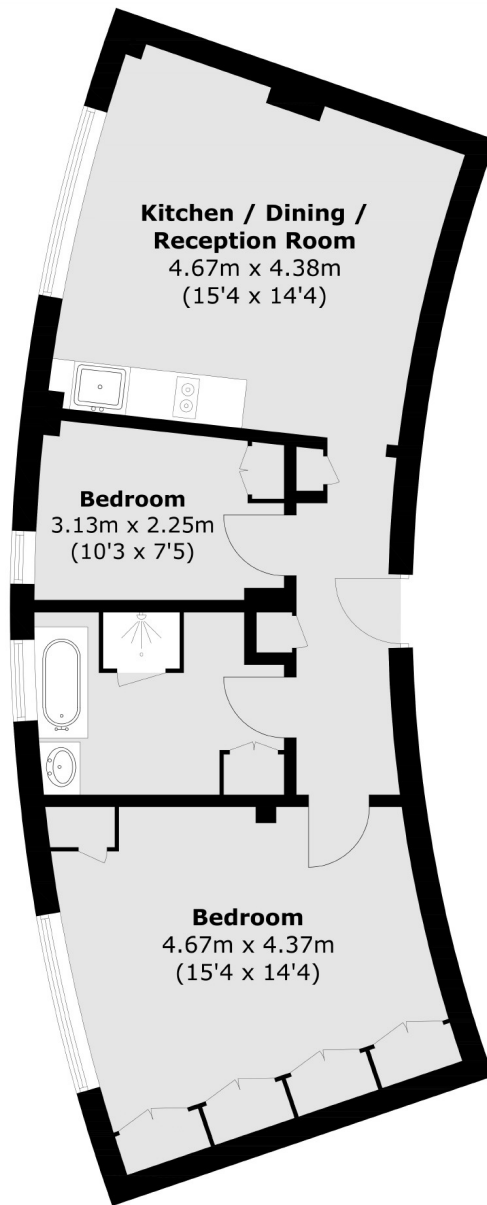
This well presented two double bedroom apartment of a lovely, well maintained mansion block and benefits from an open plan kitchen reception, wood floors throughout and built in wardrobes.

West Kensington Court is on Edith Villas, which is a quiet road off North End Road. West Kensington Underground Station is just 0.1 miles from the property. Kensington Olympia, High Street Kensington and Holland Park are all within walking distance from the property.

- Two Bedrooms • Portered Block • Wood Floors • Build In Storage • Hot Water & Heating Included • Lift Access •

FLETCHERS

ESTATE AGENTS



Total area (approx.): 56.5 sq. m (608.2 sq. ft)

Fletchers Brook Green Lettings
144 Shepherds Bush Road, Hammersmith, London, W6 7PB
020 7603 0603
brookgreenlettings@fletcherestates.com

Energy Rating: . We aim to make our particulars both accurate and reliable. However they are not guaranteed; nor do they form part of an offer or contract. If you require clarification on any points then please contact us, especially if you're traveling some distance to view. Please note that appliances and heating systems have not been tested and therefore no warranties can be given as to their good working order.