



Guide Price
£145,000

Leasehold

2x  1x  1x 

**Quarterdeck, Vectis
Way, Cosham,
Portsmouth, Hampshire,
PO6**

OVER 60?

Secure this property
for up to **59% less!**

cubitt & west
Helping you move forwards



Main features

- Long Lease
- Offered with vacant possession
- Recently decorated and new carpets laid
- Bright spacious rooms
- Close to local daily amenities and transport links

Accommodation

FIRST FLOOR

Lounge/Diner: 18'3 x 12'2 (5.57m x 3.71m)

Juliet Balcony

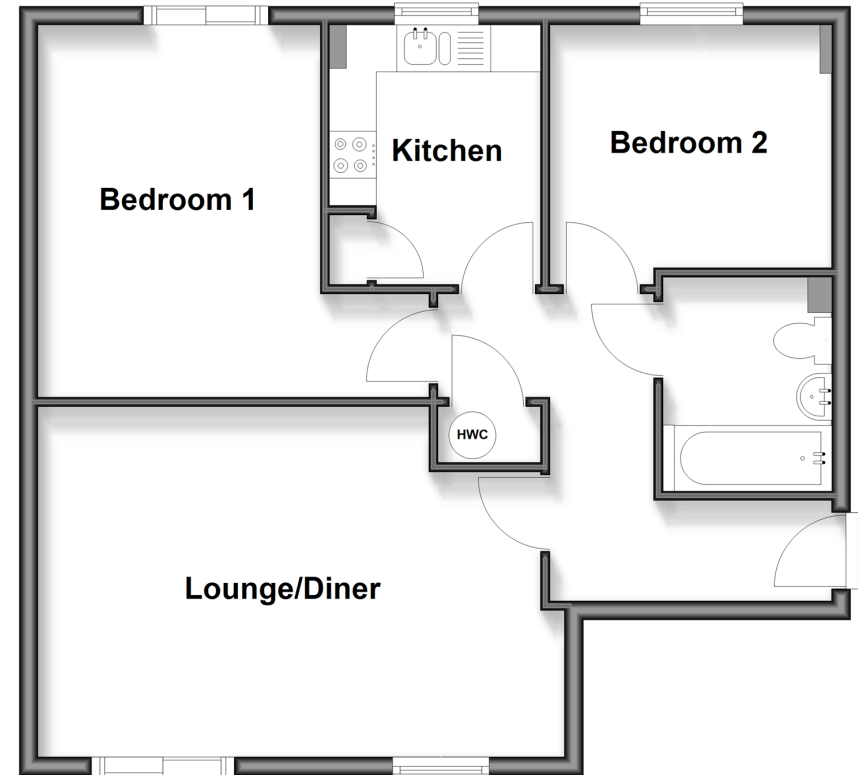
Kitchen: 9'4 x 7'3 (2.85m x 2.21m)

Bathroom: 7'3 x 5'8 (2.21m x 1.73m)

Bedroom 1: (L-shaped) 13'6 x 13'2 (4.12m x 4.02m) plus 9'8 x 3'7 (2.95m x 1.09m)

Bedroom 2: 9'7 x 8'5 (2.92m x 2.57m)

First Floor
Approx. 61.1 sq. metres (657.3 sq. feet)



Call Portsmouth - 023 9266 1213 ■ cubittandwest.co.uk

- A private rental licensing scheme applies to some properties in this area, please check with the Local Authority before proceeding
- Legal advice should be taken to verify fixtures/fittings, planning, alterations and/or lease details
- Appliances & services are untested, dimensions are approximate and floor plans are not to scale
- Through a Homewise Home For Life Plan people aged 60+ can secure this property for up to 59% less, by purchasing a Lifetime Lease



41635120/20260210/JG/VB