

Westmount Estates



Arbroath Road, London, SE9 6RN

£2,750 PCM

Westmount Estates are delighted to offer this beautifully presented three-bedroom detached family home which has thoughtfully been modernised to a high standard throughout.

The property boasts a bright and welcoming lounge which flows seamlessly into the dining room, providing an excellent space for family living and entertaining. A stylish newly fitted kitchen and third bedroom complements the ground floor accommodation, while upstairs offers two well-proportioned bedrooms and a contemporary bathroom featuring a sleek walk-in shower.

In addition, the home benefits from a spacious garage and an attractive corner-positioned rear garden. Enjoying a high degree of privacy and an abundance of natural sunlight, a perfect setting for relaxation.

ENTRANCE

PORCH WAY

ENTRANCE HALL

FRONT ROOM TO OPEN PLAN LIVING ROOM



SECOND RECEPTION ROOM



KITCHEN



DOWNSTAIR BEDROOM/OFFICE ROOM



STAIRS AND LANDING

BEDROOM ONE



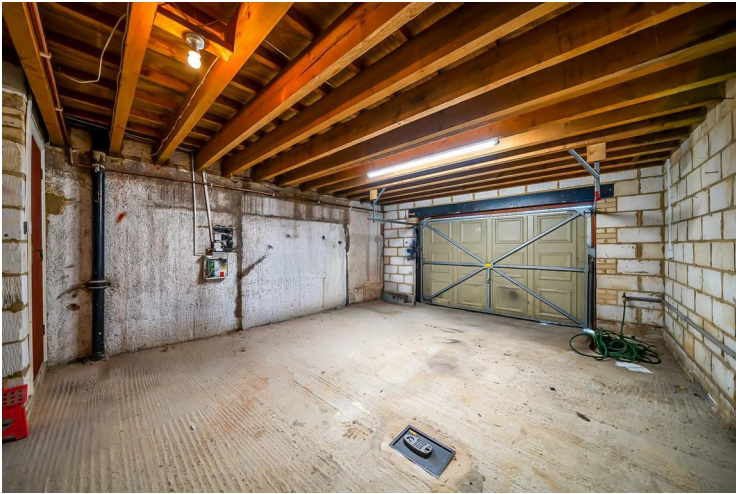
BEDROOM TWO



BATHROOM



GARAGE

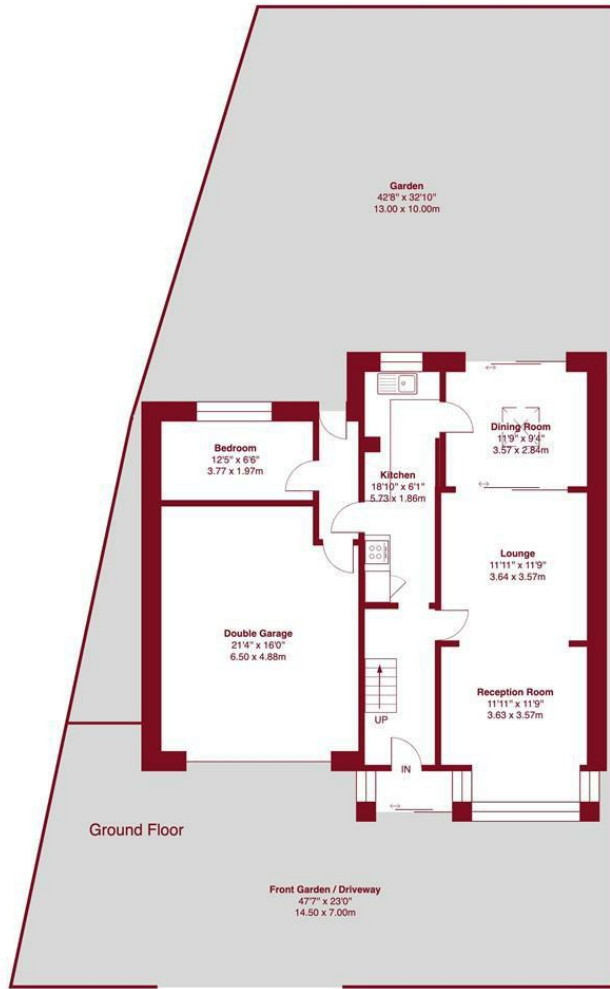


REAR GARDEN



DRIVEWAY

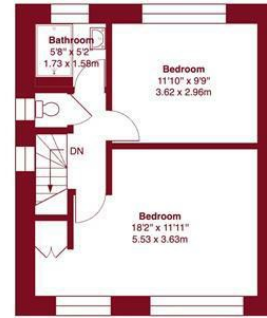
Floor Plan



Arbroath Road, SE9

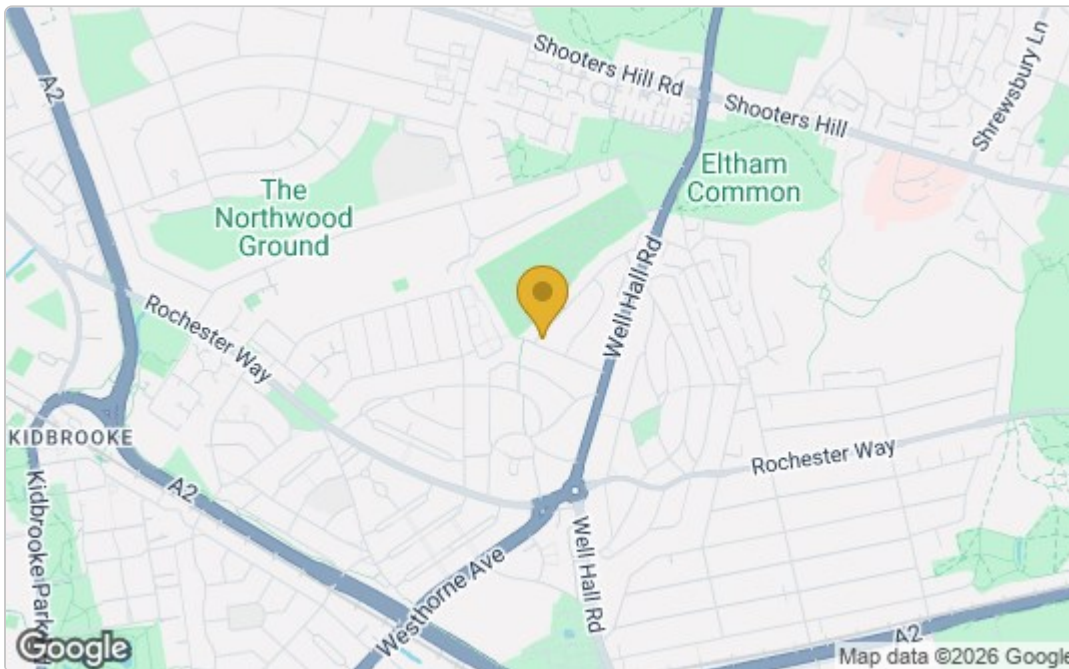
Approximate Gross Internal Area:
1501 sq ft / 139.4 sq m
(including garage)

Westmount Estates

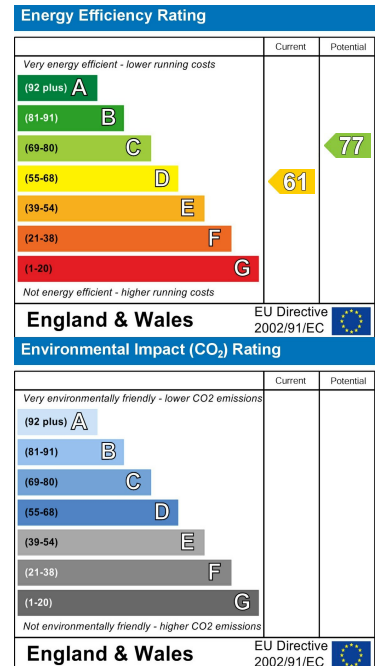


This floor plan was produced using RICS measurements standards 2nd edition. For layout guidance only and not drawn to scale unless stated. Window and door openings are approximate. Whilst every care is taken in the preparation of this plan, we would advise interested parties to check all dimensions, shapes and compass bearings prior to making any decisions reliant upon them. No liability is accepted for any errors. By www.primrosephotography.com / Copyright 2025

Area Map



Energy Efficiency Graph



These particulars, whilst believed to be accurate are set out as a general outline only for guidance and do not constitute any part of an offer or contract. Intending purchasers should not rely on them as statements of representation of fact, but must satisfy themselves by inspection or otherwise as to their accuracy. No person in this firm's employment has the authority to make or give any representation or warranty in respect of the property.

124 Westmount Road, Eltham, London, SE9 1UT

Tel: 020 8859 0101 Email: info@westmountestates.co.uk www.westmountestates.co.uk