



Finchley Road

Hampstead, NW3

£5,000 per month
(£1,153.85 per week)

SHORT LET. *VIDEO TOUR AVAILABLE*. A delightful 3 bedroom 3 bathroom house set over 2 floors with garden and double glazed windows situated close proximity to West Hampstead and walking distance to the transport links of Finchley Road.

CHESTERTONS



Finchley Road

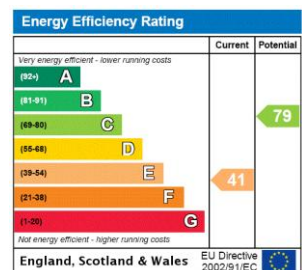
Hampstead, NW3

- A Delightful Terraced House Over 2 Floors
- 3 Bedrooms, 3 Bathrooms, Reception, Kitchen
- Garden, Double Glazed Windows
- Situated Within Close Proximity to Amenities of West Hampstead, Walking Distance to Transport Links of Finchley Road (Jubilee Line), Sharers Accepted



short let. A delightful 3 bedroom 3 bathroom house set over 2 floors with private garden and double glazed windows. The property is situated within close proximity to the amenities of West Hampstead and walking distance to the transport links of Finchley Road (Jubilee Line) into the City. Accommodation comprises: ground: reception room, fully fitted kitchen, shower room 1st floor: master bedroom with en-suite bathroom, 2 further double bedrooms, family shower room.

Minimum Term: 1 months
Deposit Required: £4,615.38
Local Authority: London Borough Of Camden
Council Tax Band: E
EPC Rating: E
Furnished



Chestertons Hampstead Lettings

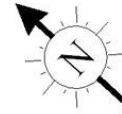
55-56 Hampstead High Street
 Hampstead
 London
 NW3 1QH
 hampsteadlettingsusers@chestertons.co.uk
 02077941125
 chestertons.co.uk

Additional tenant charges apply (fees apply to non-AST tenancies only)
 Tenancy Agreement Fee: £300
 References per Tenant/Guarantor: £60
 Inventory check (approx. £100 – £250 inc. VAT)
 chestertons.co.uk/property-to-rent/applicable-fees

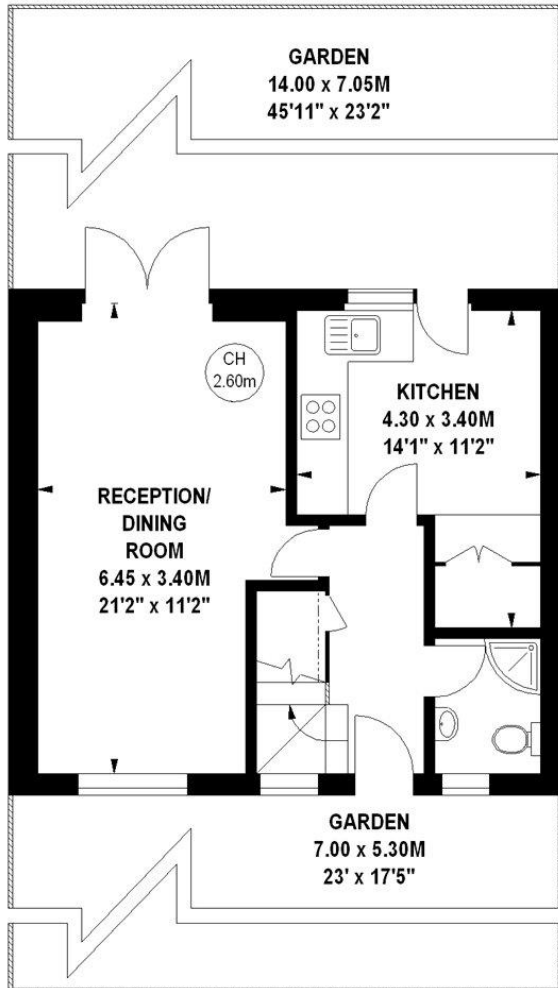
Studholme Court, NW3

Approximate gross internal area

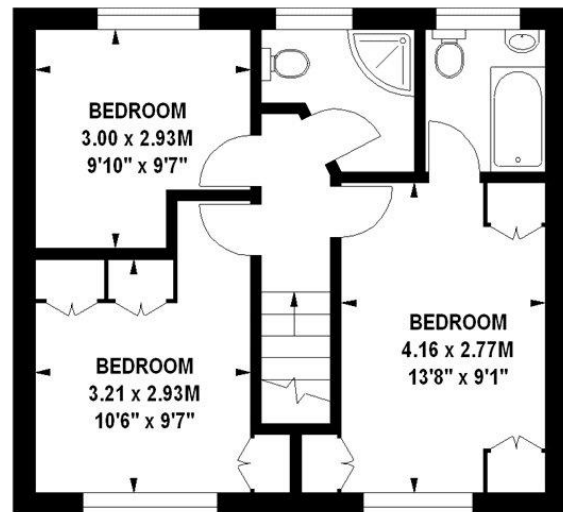
88.35 sq m / 951 sq ft



Key :
CH - Ceiling Height



472 sq ft
Ground Floor



479 sq ft
First Floor

The floor plan is not to scale and measurements and areas shown are approximate and therefore should be used for illustrative purposes only. The plan has been prepared in accordance with the RICS code of Measuring Practice and whilst we have confidence in the information produced, it must not be relied on. If there is any aspect of particular importance, you should carry out or commission your own inspection of the property.
Copyright of FeaturePRO.