



## Strafford Road, TW1

£1,550 Per calendar month

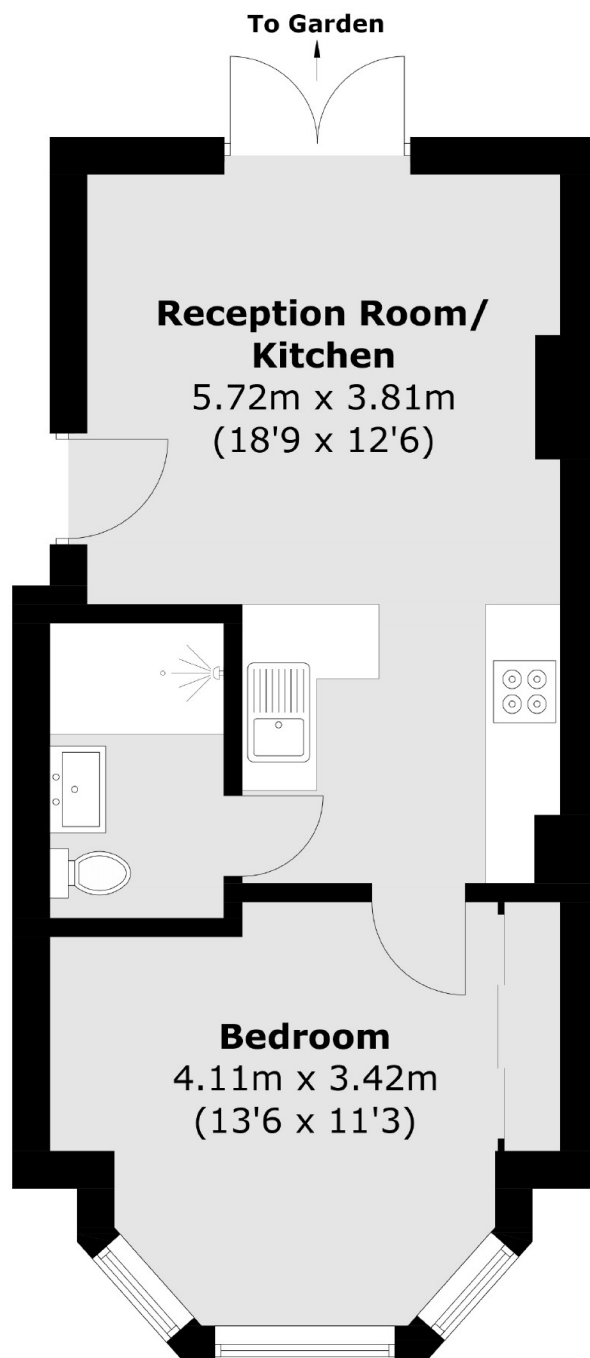
Step into this one bed ground floor flat which combines elegance, style and simplicity, with plenty of space in the garden to entertain friends and family.

Strafford Road is a highly desirable residential road, situated in a perfect location for both St Margarets and the hustle and bustle of Twickenham.

### Features

- One Double Bedroom
- Conversion Apartment
- Ground Floor
- Bay Fronted
- Private Rear Garden
- Popular Location

# Strafford Road, Twickenham, TW1



Total area (approx.): 35.4 sq. m (381.0 sq. ft)