



Warrington Crescent, W9

£1,895,000

Dexters



Warrington Crescent, W9

This exceptional raised ground floor flat is situated within a beautiful white stucco-fronted building and boasts high ceilings, classic period features, and top-tier finishes throughout. Presented in immaculate, move-in ready condition, the property includes two spacious double bedrooms, a custom-designed kitchen, a fully tiled bathroom, and a generous west-facing reception room with views over the picturesque Formosa Gardens.

The main bedroom, positioned at the front of the property, features a striking sash window and floor-to-ceiling built-in storage. Adjacent is the well-appointed family bathroom with both a bath and a shower. A hallway with bookshelves and ample storage space leads to the second bedroom and the contemporary kitchen, which is equipped with custom walnut cabinetry spanning the full length of the wall. At the rear of the flat, the expansive reception room offers three sets of French doors leading to a balcony, with stairs providing direct access to the beautifully maintained communal gardens.

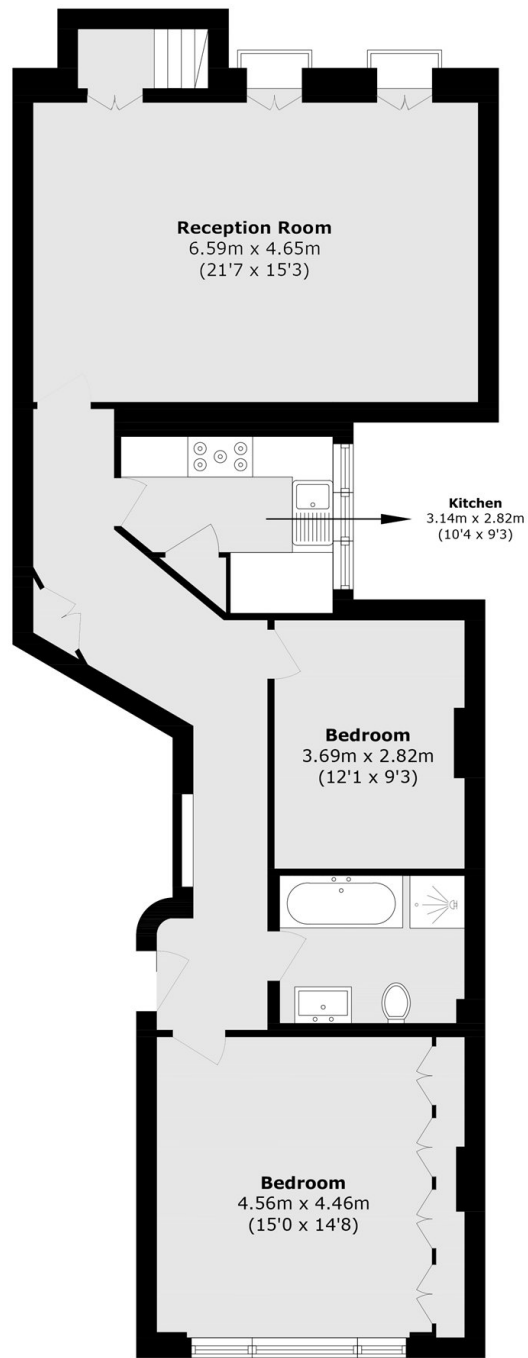
Warrington Crescent is one of Little Venice's most desirable locations, an elegant tree-lined street surrounded by period properties, with easy access to Warwick Avenue Underground station and a variety of shops, cafés, bars, and restaurants.

Features

- Raised Ground Floor Flat
- White Stucco-Fronted
- Spacious Reception
- Great Transport Links
- Direct Access To Gardens
- Prime Little Venice



Warrington Crescent, Maida Vale, W9



Total area (approx.): 94.8 sq. m (1020.4 sq. ft)