



22 Turrell Drive

Kessingland, Lowestoft, NR33 7UA

Asking Price £200,000



22 Turrell Drive

Kessingland, Lowestoft, NR33 7UA

Aldreds are delighted to present this superbly maintained two double bedroom bungalow, ideally positioned at the end of a quiet cul-de-sac in the highly sought-after village of Kessingland. This beautifully presented home offers well-planned accommodation comprising an entrance porch, a spacious and inviting living room, a stylish modern kitchen, and a bright conservatory overlooking the garden. There are two generously sized double bedrooms and a contemporary shower room finished to a high standard. Outside, the property benefits from a private enclosed garden, together with a garage and off-road parking. An early viewing is highly recommended to fully appreciate all this wonderful home has to offer.

Entrance Porch

Part glazed front door to entrance porch. Coats hanging space, door to living room.

Living Room

Large living room, front aspect bay window, feature fireplace, radiator, TV point.

Kitchen

Superb modern kitchen with ample storage and work surface. Appliances include electric hob, oven and cooker hood. Space and plumbing for additional appliances.

Conservatory

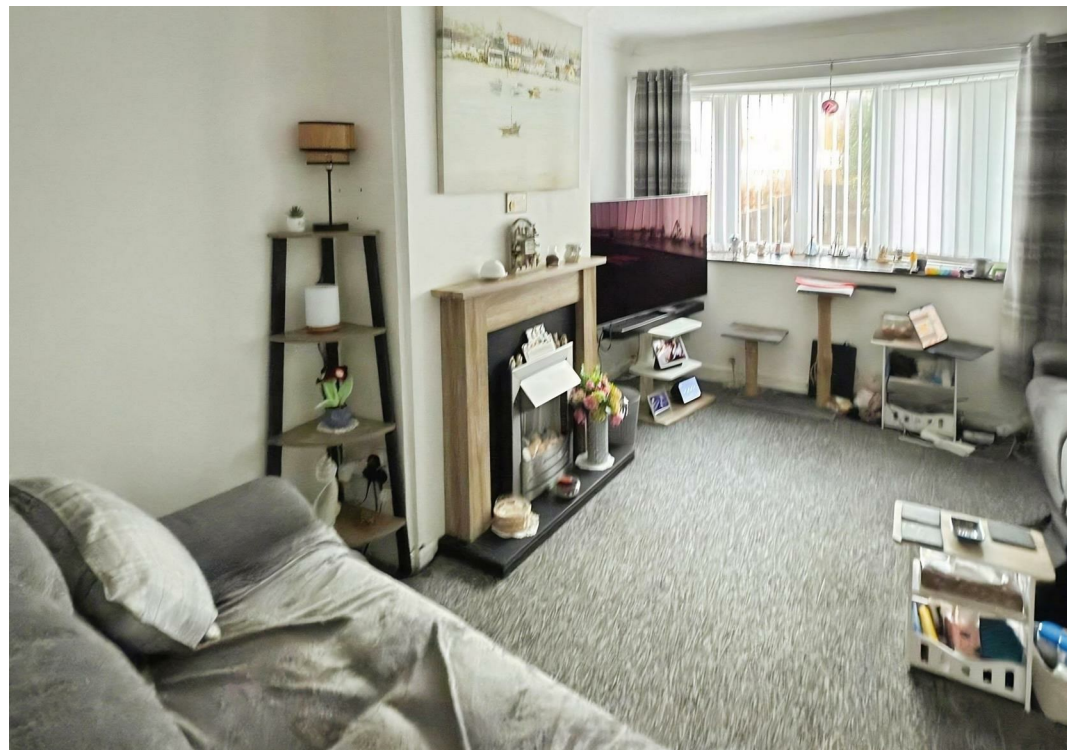
Quality conservatory, tiled floor, doors to garden.

Bedroom 1

Double bedroom, front aspect window, radiator.

Bedroom 2

Second double bedroom, glazed rear aspect patio doors opening to garden. Radiator.





Shower Room

Suite in white comprising double sized shower cubicle with electric shower, WC and wash basin. Frosted window, Heated towel rail.

Garden

Enclosed private rear garden laid to lawn - Please note the side garden area is not included unless purchased at extra cost

Garage & Parking

Single garage with automated garage door. Additional parking.

Additional Information

COUNCIL TAX BAND- A

Freehold

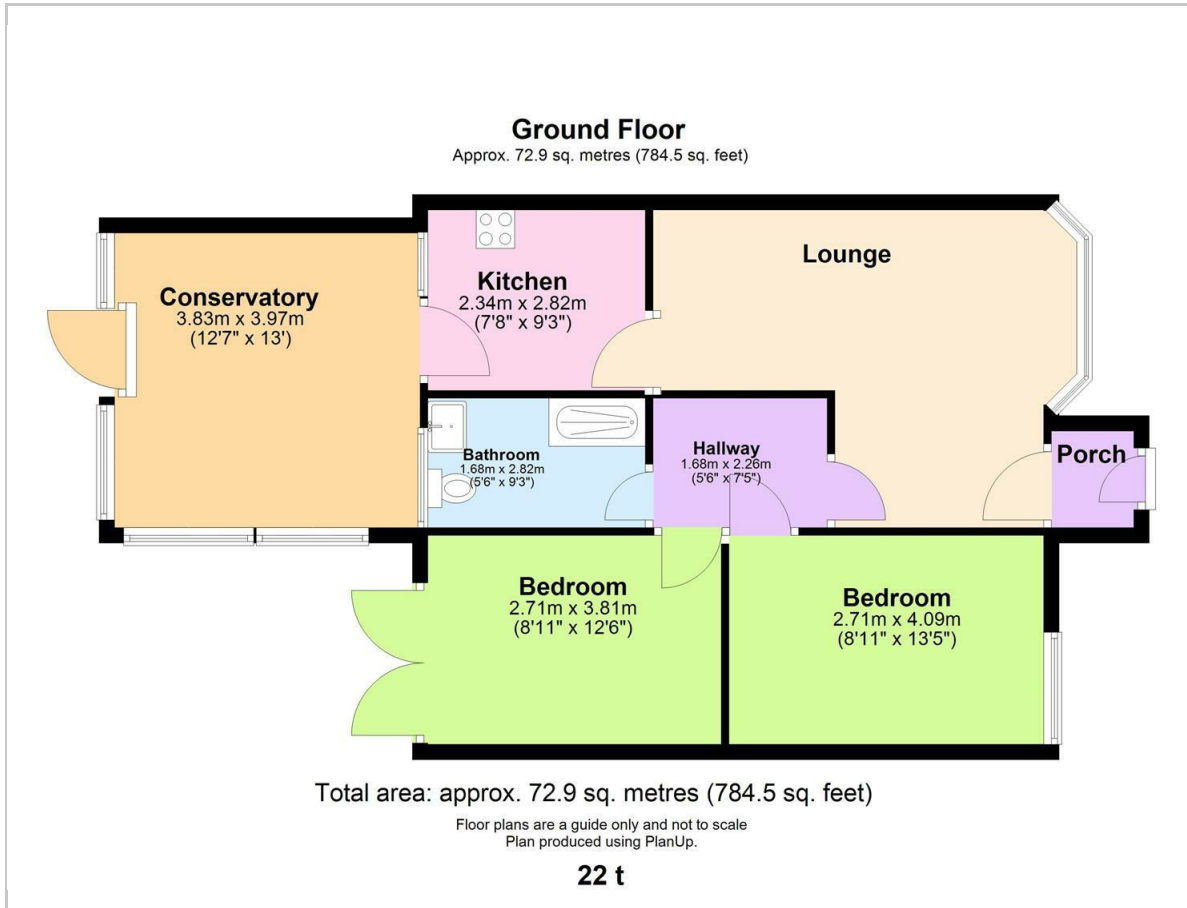
Mains Gas Electric Drains And Water

Side Land Not Included In The Asking Price

Ref: L2617/05/26



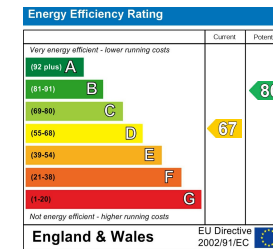
Floor Plan



Area Map



Energy Efficiency Graph



Viewing

Please contact our Aldreds Lowestoft Office on 01502 565432 if you wish to arrange a viewing appointment for this property or require further information.

Disclaimer

These particulars are issued on an understanding that all negotiations shall be conducted through Messrs. Aldreds. Please note: Messrs. Aldreds for themselves and for the vendors or lessors of this property whose agents they are given notice that: 1. Particulars are set out as a general outline only for guidance of intending purchasers or lessees, and do not constitute nor constitute part of, an offer or contract. 2. All descriptions, dimensions, references to condition and necessary permissions for use and occupation, and other details are given without responsibility and any intending purchasers or tenants should not rely on them as statements or representations of fact but must satisfy themselves by inspection or otherwise as to the correctness of each of them. 3. No person in the employment of Messrs. Aldreds has any authority to make or give any representation or warranty whatever in relation to this property. 4. If you are proposing to visit the property and are travelling some distance please check with Aldreds on the issue of availability prior to travelling. 5. Aldreds Property Consultants and associated services may offer additional services to the prospective purchaser for which they will be entitled to receive a commission.

Aldreds are pleased to be working with Mortgage Advice Bureau. They're an award-winning mortgage broker with over 1,400 advisers across the UK, and have access to over 12,000 mortgage products from over 90 lenders. Aldreds Estate Agents Ltd receive a commission of £200 on each completed case. Your home may be repossessed if you do not keep up repayments on your mortgage. There may be a fee for mortgage advice. The actual amount you pay will depend upon your circumstances. The fee is up to 1%, but a typical fee is 0.3% of the amount borrowed. Mortgage Advice Bureau is a trading name of Mortgage Seeker Limited which is an appointed representative of Mortgage Advice Bureau Limited and Mortgage Advice Bureau (Derby) Limited which are authorised and regulated by the Financial Conduct Authority. Mortgage Seeker Limited Registered Office: Lovewell Blake, Sixty Six North Quay, Great Yarmouth, Norfolk, NR30 1HE. Registered in England Number: 03721415. 6. Potential purchasers should check with their providers that the broadband and mobile phone coverage they would require is available.

143 London Road North, Lowestoft, Suffolk, NR32 1NE

Tel: 01502 565432 Email: lowestoft@aldreds.co.uk <https://www.aldreds.co.uk/>

Registered in England Reg. No. 08945751 Registered Office: 17 Hall Quay, Great Yarmouth, Norfolk NR30 1HJ

Directors: Mark Duffield B.S.c. FRICS. Dan Crawley MNAEA Paul Lambert MNAEA