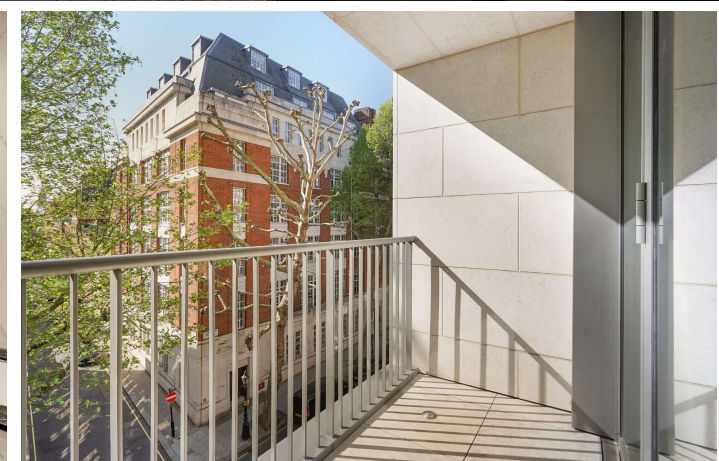




Millbank
London, SW1P

CHESTERTONS





A stunning and exceptionally spacious two double bedroom apartment extending to approximately 1,132 sq ft, set within 9 Millbank, an outstanding riverside development completed in 2023.

This beautifully designed home features a bright and expansive reception area, seamlessly flowing into a refined open-plan kitchen fitted with high-specification, fully integrated appliances—perfect for both everyday living and entertaining. The principal bedroom benefits from a luxurious en-suite bathroom, while the second double bedroom is served by a stylish and contemporary family bathroom. Further benefits include a private balcony and no onward chain.

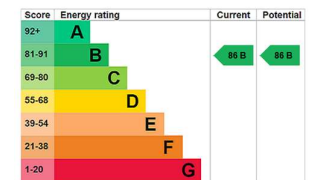
Residents of this prestigious development enjoy access to an array of world-class amenities, including a state-of-the-art gymnasium, swimming pool, spa facilities, and a private cinema.

Finished to an exceptional standard throughout, this impressive property combines generous proportions with modern elegance in one of London's most desirable new addresses.

9 Millbank provides superb transport links including Gatwick Express, Circle, District and Victoria lines and National rail services. The property is very well located for St James Park and Westminster underground stations providing linkages to the Jubilee, District and Circle lines.

- An Outstanding Two Double Bedroom Apartment
- Spacious Reception Leading onto Private Balcony
- Modern Open Plan Kitchen
- Two Bathrooms
- 24hr Concierge
- Gym, Swimming Pool, Spa, Residents Lounge

Asking Price £2,275,000



Tenure: Leasehold 994 years 8 months (Expires on 1st January 3021)

Service Charge: £17,000 (Approximately)

Ground Rent: £750

Local Authority: Westminster

Council Tax Band: G

Chestertons Westminster & Pimlico Sales

105 Wilton Road

London

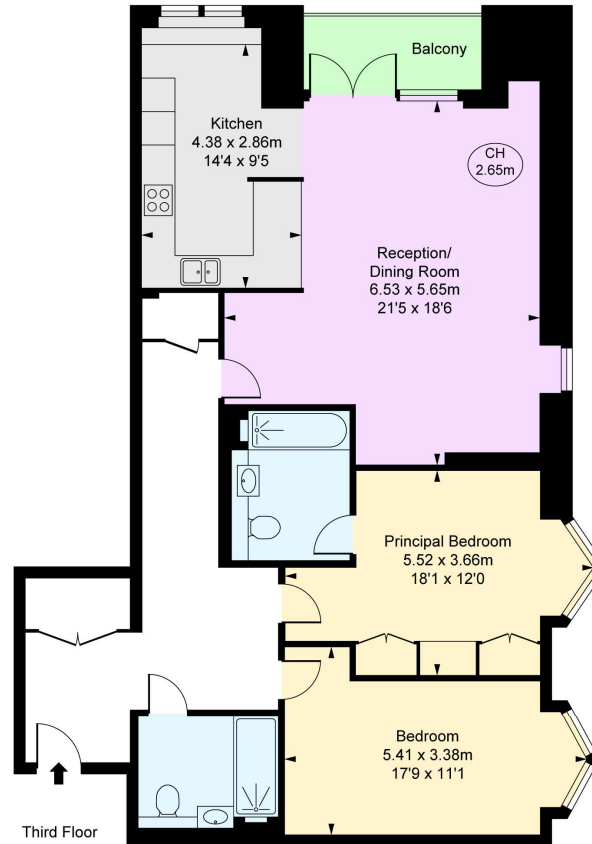
SW1V 1DZ

westminster@chestertons.co.uk

020 3040 8201

chestertons.co.uk

Millbank Quarter, SW1P
 Approximate Gross Internal Area
 105.18 sq m / 1,132 sq ft
 (CH = Ceiling Heights)



Third Floor



This plan is not to a given scale. A detailed layout plan to scale for valuation is available on request. All measurements and areas are within 3% tolerance and have been prepared in accordance with industry standards as defined in the RICS Code of Measuring Practice
 © Fulham Performance

Chesterton UK Services Limited trading as Chestertons for themselves and for the vendor of this property whose agents they are, give notice that (i) these particulars do not constitute any part of an offer or contract, (ii) all statements contained within these particulars are made without responsibility on the part of Chestertons or the vendor, (iii) whilst made in good faith, none of the statements contained within these particulars are to be relied upon as a statement or representation of fact, (iv) any intending purchasers must satisfy themselves by inspection or otherwise as to the correctness of each of the statements contained within these particulars, (v) the vendor does not make or give either Chestertons or any person in their employment any authority to make or give representation or warranty whatsoever in relation to this property. Wide angle lenses may be used. ©Copyright Chestertons | Chesterton UK Services Limited | Registered Office 5th Floor, The Lantern, 75 Hampstead Road, London, NW1 2PL Registered Company Number 05334580.



This paper is 100% recyclable