



36 Chestnut Glen, Hornchurch

Offers Over £595,000





36 Chestnut Glen

Hornchurch, Hornchurch

Council Tax band: D

Tenure: Freehold

EPC Energy Efficiency Rating: D

EPC Environmental Impact Rating: E

- Four Double Bedroom End Of Terrace Family Home
- Double Rear and side extensions
- Large Open Plan Kitchen/Breakfast room/ Reception
- Utility Room
- Study
- Ground Floor Bathroom
- First Floor Shower Room
- 100ft West Facing Rear Garden
- Off Street Parking for two cars
- Internal inspection highly recommended



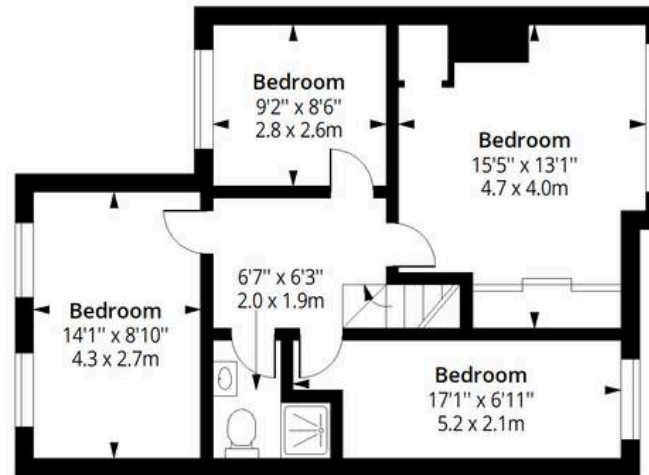




Chestnut Gle RM12

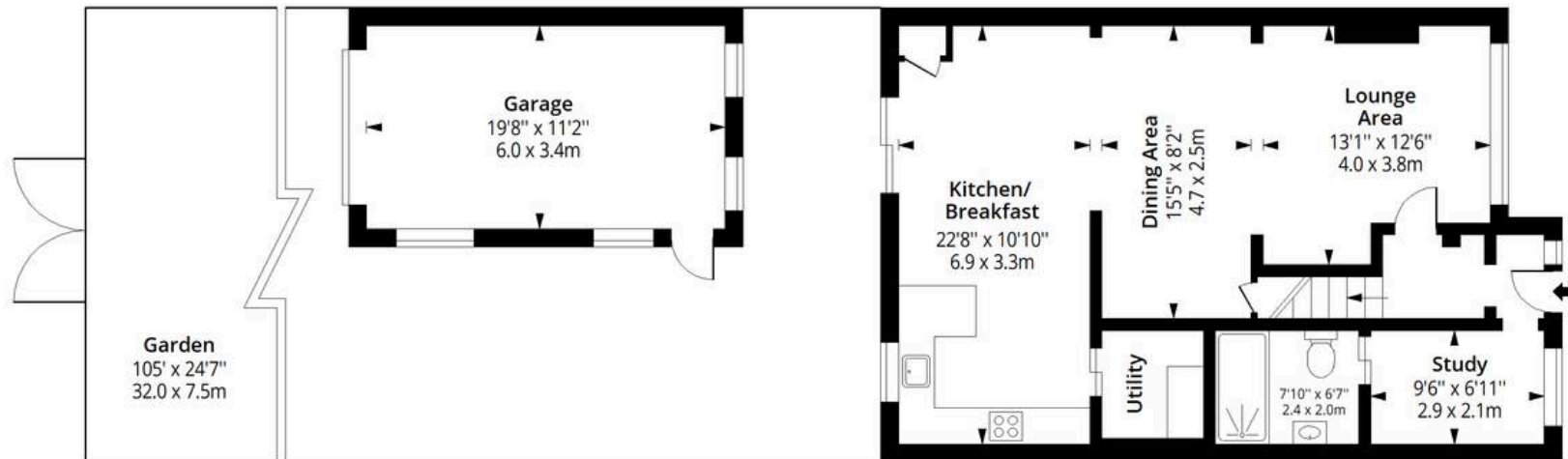
Approx. Gross Internal Area 1424 Sq Ft - 132.29 Sq M

Approx. Gross Garage Area 220 Sq Ft - 20.44 Sq M



First Floor

Floor Area 644 Sq Ft - 59.83 Sq M



Ground Floor

Floor Area 780 Sq Ft - 72.46 Sq M



Measured according to RICS IPMS2. Floor plan is for illustrative purposes only and is not to scale. Every attempt has been made to ensure the accuracy of the floor plan shown, however all measurements, fixtures, fittings and data shown are an approximate interpretation for illustrative purposes only. 1 sq m = 10.76 sq feet.

Date: 23/3/2026



Nested

Fora, 9 Dallington Street, London - EC1V 0LN

01992 870518 • mikeandwayne@nested.com • www.nested.com

