



£215,000

Burket Close

Southall, UB2 5NU

PROPERTY SUMMARY

Located near the borders of Norwood Green, this well-presented one bedroom first floor flat offers a fantastic opportunity for first-time buyers and investors alike.

The property is in very good condition throughout and comprises a spacious double bedroom, a bright reception room, a modern kitchen and a well-maintained bathroom. Residents also benefit from access to a communal garden perfect for enjoying outdoor space without the upkeep.

Situated within easy reach of Southall station, which now benefits from the Elizabeth Line, the flat enjoys excellent transport links to Central London, Heathrow and beyond.

Local Amenities, schools, and green spaces are all nearby, making this an ideal location for convenience and connectivity.

Viewings are highly recommended!

1



1



1

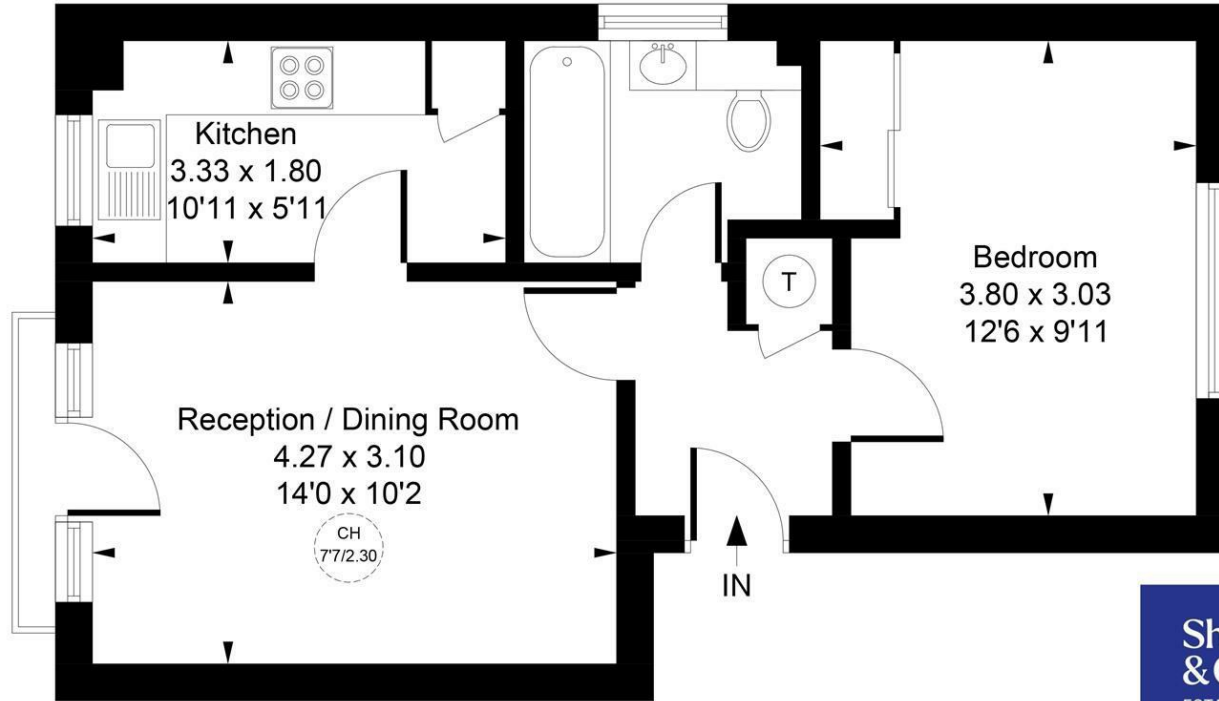




Approximate Gross Internal Area
39.89 sq m / 429 sq ft



CH = Ceiling Height



First Floor



Whilst every attempt has been made to ensure the accuracy of the floor plan contained here, measurements of doors, windows, rooms and any other items are approximate and no responsibility is taken for any error, omission, or mis-statement. This plan is for illustrative purposes only and should be used as such by any prospective purchase.

© Vizion Property Marketing Produced for Shaw & Co.

LOCAL AUTHORITY

Hounslow

TENURE

Leasehold

COUNCIL TAX BAND

B

VIEWINGS

By prior appointment only

| Energy Efficiency Rating | | Current | Potential |
|---|--|-------------------------|-----------|
| Very energy efficient - lower running costs | | | |
| (92 plus) A | | | |
| (81-91) B | | | |
| (69-80) C | | | |
| (55-68) D | | 68 | 76 |
| (39-54) E | | | |
| (21-38) F | | | |
| (1-20) G | | | |
| Not energy efficient - higher running costs | | | |
| England & Wales | | EU Directive 2002/91/EC | |



Agents Note: Whilst every care has been taken to prepare these particulars, they are for guidance purposes only. All measurements are approximate and are for general guidance purposes only and whilst every care has been taken to ensure their accuracy, they should not be relied upon and potential buyers/tenants are advised to recheck the measurements

Shaw & Co
ESTATE AGENTS

OFFICE ADDRESS
10 Central Parade
New Heston Road
Heston
Middlesex
TW5 0LJ

OFFICE DETAILS
0208 570 7258
heston@shawandcoestates.com