

TUDOR DRIVE

GIDEA PARK I ESSEX I RM2 5LJ



GUIDE PRICE £340,000

Telephone 01708 730255

Located in this very popular residential turning is this two bedroom ground floor maisonette. The accommodation comprises of hallway, bay fronted lounge, dining room, kitchen, two bedrooms and bathroom. Externally, your own rear garden with side access via pedestrian gate. To the front is off road parking for several cars. EPC D.

- Ground Floor Maisonette
- Popular Location
- Lounge
- Two Bedrooms
- Off Road Parking
- 13 Minute Walk to Gidea Park Station (Google Maps)
- Dining Room
- Own Rear Garden

Hallway

Lounge: 15'6 x 14'2 – Bay window, measurement into bay.

Dining Room: 12'9 x 11'6 – Built-in storage cupboard.

Kitchen: 11'11 x 6'10 – Door to rear garden.

Bedroom One: 12' x 9'11 – Built-in wardrobe cupboards, room sizes include these.

Bedroom Two: 12' x 7'8 – Built-in wardrobe cupboards, room sizes include these.

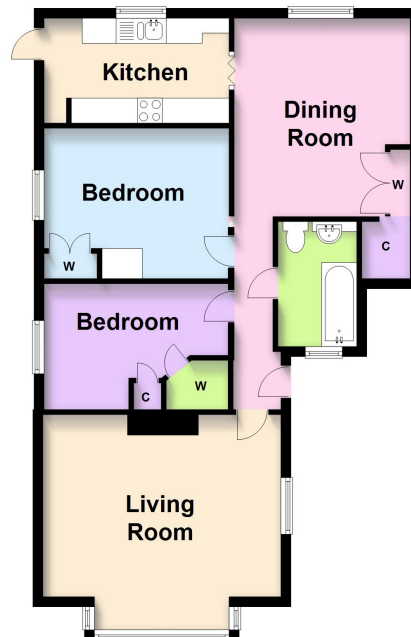
Bathroom

Rear Garden: Measurements to be confirmed. – Side access via pedestrian gate.

Front: Off road parking to front for several cars.

Ground Floor Flat

Approx. 71.9 sq. metres (774.2 sq. feet)



Total area: approx. 71.9 sq. metres (774.2 sq. feet)

Whilst every attempt has been made to ensure the accuracy of the floor plan, measurements of doors, windows and any other items are approximate and no responsibility is taken for any error, omission or mis statement. The plan is for illustrative purposes only and should be used as such by any prospective purchaser.

Plan produced using PlanUp.

Telephone 01708 730255

www.beresfordsgroup.co.uk

Consumer Protection from Unfair Trading Regulations 2008 and the Business Protection from Misleading Marketing Regulations 2008: Every effort has been made to ensure that consumers and or businesses are treated fairly and provided with accurate material information as required by law. It must be noted however that the agent has not tested any apparatus, equipment, fixture, fittings or services and does not verify they are in working order, fit for their purpose, or within the ownership of the seller or landlord, therefore the buyer or tenant must assume the information given is incorrect. Neither has the agent checked the legal documentation to verify the legal status of the property. A buyer or tenant must assume information is incorrect until it has been verified by their own solicitors or other advisers. Nothing concerning the type of construction, condition of the structure or its surroundings is to be implied from any image of the property.